

maparch

MAP Archaeological Practice



Bootham Crescent Football Ground
Grosvenor Road
York

MAP 5-10-2018

SE 5990 5290

19/00246/FULM

HISTORIC BUILDING RECORD (LEVEL 2)

MAP Archaeological Practice Ltd © 2022

Bootham Crescent Football Ground
Grosvenor Road
York

MAP 5.10.2018

19/00246/FULM

SE 5990 5290

HISTORIC BUILDING RECORDING
(LEVEL 2: PHOTOGRAPHIC & DESCRIPTIVE RECORD)

Contents	Page
Figure List	2
Plate List	2
Non-Technical Summary	7
1. Introduction	8
2. Site Description	10
3. Historical Background	10
4. Aims and Objectives	14
5. Methodology	14
6. Results	15
7. Conclusions	22
8. References and Bibliography	24
9. List of Contributors	24

Figure List		Page
1.	Site Location. Scale 1:20,000.	9
2.	Location of Exterior Photographs. Scale 1:100.	25
3.	Popular Stand Tunnel: Location of Photographs (based on demolition drawing).	26
4.	1922 Bar & Club Shop Interior: Location of Ground & First Floor Photographs (based on demolition drawing).	27
5.	Main Stand Interior: Location of Ground Floor Photographs. (based on demolition drawing).	28
6.	Main Stand Interior: Location of First Floor Photographs (based on demolition drawing).	29
7.	Main Stand Interior: Location of Second Floor Photographs (based on demolition drawing).	30
8.	Gym Interior: Location of Photographs (based on demolition drawing).	31
 Plate List		 Page
1.	Bootham Terrace Football Club (DSC_0706). Facing East.	32
2.	Bootham Terrace Football Club (DSC_0693). Facing North.	32
3.	Bootham Terrace Football Club (DSC_0708). Facing North.	33
4.	Bootham Terrace Football Club (DSC_0695). Facing North-west.	33
5.	Entrance onto Grosvenor Road End (DSC_0699). Facing North.	34
6.	Grosvenor Road Boundary Wall (DSC_0700), Facing West.	34
7.	Entrances on Grosvenor Road (DSC_0701). Facing North-west.	35
8.	Entrances on Grosvenor Road (DSC_0704). Facing North-west.	35
9.	Entrances on Grosvenor Road (DSC_0705). Facing North.	36
10.	Entrances at north end of car park (DSC_0723). Facing North.	36
11.	Entrances at north end of car park (DSC_0721). Facing West.	37
12.	Entrances at north end of car park (DSC_0756). Facing East.	37
13.	Entrances at north end of car park (DSC_0759). Facing South-west.	38
14.	Entrances at north end of car park (DSC_0723). Facing South.	38
15.	Entrance at north end of car park (DSC_0758). Facing East.	39
16.	Entrances at east side of Grosvenor Road End (DSC_0725).	

Facing South.	39
17. Entrances at east side of Grosvenor Road End (DSC_0731). Facing South-east.	40
18. Entrances at centre of Grosvenor Road End (DSC_0737). Facing South.	40
19. Entrances at east side of Grosvenor Road End (DSC_0738). Facing South-east.	41
20. Turnstile at Grosvenor Road End (DSC_0681). Facing West.	41
21. Turnstile at Grosvenor Road End (DSC_0682). Facing East.	42
22. Maker's Plate on Turnstile (DSC_0680). Facing West.	42
23. Entrance at centre of Grosvenor Road End (DSC_0740). Facing West.	43
24. Entrance at west side of Grosvenor Road End (DSC_0794). Facing South.	43
25. Pitch, Main Stand and David Longhurst Stand (DSC_0742). Facing North-east.	44
26. Pitch and Grosvenor Road End (DSC_0732). Facing South.	44
27. Grosvenor Road End (DSC_0730). Facing West.	45
28. Grosvenor Road End (DSC_0734). Facing West.	45
29. Grosvenor Road End (DSC_0734). Facing East.	46
30. Grosvenor Road End (DSC_0784). Facing West.	46
31. Terraces between the Popular and David Longhurst Stands (DSC_0775). Facing West.	47
32. Store (DSC_0774). Facing North-west.	47
33. Access to rear of David Longhurst Stand (DSC_0770). Facing West.	48
34. Toilet Block behinds David Longhurst Stand (DSC_0771). Facing North.	48
35. 1922 Bar: Exterior South Elevation (DSC_0697). Facing North.	49
36. Club Shop: Exterior East Elevation (DSC_0710). Facing South-west.	49
37. 1922 Bar: Exterior West Elevation (DSC_0726). Facing East.	50
38. Main Stand: Exterior West and South Elevations and Club Shop: Exterior West Elevation (DSC_0727). Facing North-east.	50
39. Main Stand: Exterior East Elevation (DSC_0714). Facing North-west.	51
40. Main Stand: Exterior East Elevation (DSC_0715). Facing North-west.	51
41. Main Stand: Exterior East Elevation (DSC_0717). Facing South-west.	52
42. Main Stand: Exterior East and North Elevations (DSC_0718). Facing South-west.	52
43. Main Stand: Exterior East Elevation (DSC_0719). Facing North-west.	53
44. Main Stand: Exterior North and East Elevations (DSC_0709). Facing North-west.	53
45. Main Stand: Exterior North Elevation (DSC_0722). Facing South-west.	54
46. Main Stand: Exterior West and South Elevations (DSC_0743). Facing North-west.	54

47. Main Stand: Exterior West and North Elevations (DSC_0748). Facing South-east..	55
48. Main Stand: Players Entrance and Commentary Box (DSC_0751). Facing East.	55
49. Main Stand: Commentary Box (DSC_0693). Facing North-east.	56
50. David Longhurst Stand: Exterior South and East Elevations (DSC_0761). Facing North-west.	56
51. David Longhurst Stand: Exterior South Elevation (DSC_0764). Facing North.	57
52. David Longhurst Stand: Access to Rear (DSC_0766). Facing North.	57
53. Rear Access to David Longhurst Stand (DSC_0768). Facing East.	58
54. Popular Stand: Exterior North and East Elevations (DSC_0776). Facing South-west.	58
55. Popular Stand: Exterior South and East Elevations (DSC_0782). Facing North-west.	59
56. Popular Stand: Exterior North Elevation and Tunnel (DSC_0772). Facing South.	59
57. Popular Stand: Exterior Terraces (DSC_0781). Facing South-west.	60
58. Popular Stand Entrance to Tunnel (DSC_0780). Facing West.	60
59. Popular Stand: Exterior South Elevation (DSC_0785). Facing North.	61
60. Popular Stand: Steps from the tunnel (DSC_0792). Facing South.	61
61. Popular Stand Tunnel (DSC_0686). Facing North.	62
62. Popular Stand Tunnel Stairs (DSC_0685). Facing South-east.	62
63. Popular Stand Tunnel Stairs (DSC_0687). Facing East.	63
64. Popular Stand Tunnel (DSC_0684). Facing South.	63
65. Gym: Exterior East Elevation (DSC_0739). Facing West.	64
66. Gym: Exterior East and South Elevations (DSC_0741). Facing West.	64
67. Gym: Exterior West Elevation (DSC_0788). Facing South.	65
68. Gym: Exterior North Elevation (DSC_0789). Facing South-east.	65
69. 1922 Bar: Interior Ground Floor (DSC_0568). Facing North.	66
70. 1922 Bar: Interior Ground Floor (DSC_0568). Facing South.	66
71. 1922 Bar: Interior Ground Floor (DSC_0570). Facing South-east.	67
72. 1922 Bar: Interior Ground Floor (DSC_0575). Facing North-east.	67
73. 1922 Bar: Interior Ground Floor (DSC_0579). Facing North.	68
74. 1922 Bar: Interior Ground Floor (DSC_0581). Facing North.	68
75. 1922 Bar: Interior Ground Floor (DSC_0585). Facing East.	69
76. 1922 Bar: Interior Ground Floor (DSC_0586). Facing West.	69
77. 1922 Bar: Interior Ground Floor (DSC_0587). Facing South-west.	70
78. 1922 Bar: Interior Ground Floor (DSC_0589). Facing North-west.	70
79. 1922 Bar: Interior Stairs (DSC_0590). Facing South-west.	71

80.	1922 Bar: Interior First Floor (DSC_0593). Facing South-west.	71
81.	1922 Bar: Interior First Floor (DSC_0594). Facing North-west.	72
82.	1922 Bar: Interior First Floor (DSC_0591). Facing South-west.	72
83.	1922 Bar: Interior First Floor (DSC_0592). Facing South-east.	73
84.	Club Shop: Interior (DSC_00597). Facing North-west.	73
85.	Club Shop: Interior (DSC_0598). Facing East.	74
86.	Club Shop: Interior (DSC_0599). Facing West.	74
87.	Club Shop: Interior (DSC_0600). Facing North-west.	75
88.	Club Shop: Interior (DSC_0603). Facing East.	75
89.	Club Shop: Interior (DSC_0607). Facing North.	76
90.	Main Stand: Interior Ground Floor (DSC_0646). Facing North.	76
91.	Main Stand: Interior Ground Floor (DSC_0650). Facing South.	77
92.	Main Stand: Interior Ground Floor (DSC_0647). Facing East.	77
93.	Main Stand: Interior Ground Floor (DSC_0653). Facing West.	78
94.	Main Stand: Interior Ground Floor (DSC_0655). Facing South.	78
95.	Main Stand: Interior Ground Floor (DSC_0659). Facing West.	79
96.	Main Stand: Interior Ground Floor (DSC_0661). Facing East.	79
97.	Main Stand: Interior Ground Floor (DSC_0663). Facing South-east.	80
98.	Main Stand: Interior Ground Floor (DSC_0664). Facing North-west.	80
99.	Main Stand: Interior Ground Floor (DSC_0665). Facing South.	81
100.	Main Stand: Interior Ground Floor (DSC_0655). Facing West.	81
101.	Main Stand: Interior Ground Floor (DSC_0668). Facing West.	82
102.	Main Stand: Interior Ground Floor (DSC_0669). Facing East.	82
103.	Main Stand: Interior First Floor (DSC_0625). Facing North.	83
104.	Main Stand: Interior First Floor (DSC_0626). Facing South.	83
105.	Main Stand: Interior First Floor (DSC_0627). Facing North.	84
106.	Main Stand: Interior First Floor (DSC_0631). Facing South.	84
107.	Main Stand: Interior First Floor (DSC_0633). Facing South.	85
108.	Main Stand: Interior First Floor (DSC_0634). Facing North.	85
109.	Main Stand: Interior First Floor (DSC_0635). Facing West.	86
110.	Main Stand: Interior First Floor (DSC_0637). Facing South.	86
111.	Main Stand: Interior First Floor (DSC_0638). Facing North.	87
112.	Main Stand: Interior First Floor (DSC_0640). Facing South.	87
113.	Main Stand: Interior First Floor (DSC_0641). Facing North.	88
114.	Main Stand: Interior Second Floor (DSC_0628). Facing South.	88
115.	Main Stand: Interior Second Floor (DSC_0629). Facing North.	89
116.	Main Stand: Interior Second Floor Stairs (DSC_0624). Facing North.	89
117.	Main Stand: Interior Second Floor (DSC_0613). Facing South.	90
118.	Main Stand: Interior Second Floor (DSC_0614). Facing South-west.	90
119.	Main Stand: Interior Second Floor (DSC_0616). Facing North.	91
120.	Main Stand: Interior Second Floor (DSC_0617). Facing North.	91
121.	Main Stand: Interior Second Floor (DSC_0618). Facing South.	92

122. Gym: Interior (DSC_0670). Facing North-west.	92
123. Gym: Interior (DSC_0671). Facing North-east.	93
124. Gym: Interior (DSC_0673), Facing, South-west.	93

Appendices	Page
1. Photographic Listing & Contact Sheets	97
2. Written Scheme of Investigation	107

Non-Technical Summary

This report has been undertaken by MAP Archaeological Practice Ltd under the instruction Persimmon Homes, to record Bootham Crescent Football Ground, York, prior to its demolition.

This site had previously been a cricket ground and opened as a football ground in 1932 with the Main Stand to the east, Popular Stand to the west and banked terraces to the north and south. The 1937 Edition Ordnance Survey map depicted the main stand and the popular stand to the west. The ground was improved in the 1950s when the Main Stand was extended to the north. The 1961 Ordnance Survey map depicted terraces added north and south of the pitch and a larger eastern stand. In 1991, the Shipton Street End, to the north of the pitch, was covered and renamed the Longhurst Stand, in honour of David Longhurst, a York City player who collapsed and died on the pitch the previous year.

The three covered stands are constructed of brick, concrete and steel. The majority of the seating had been removed at the time of the building record. There was a tunnel beneath the Popular Stand. There was a commentary/press box in the centre of the Main Stand and a three storey high extension constructed on the east side of the Main Stand, containing offices, hospitality suites, family room, physiotherapists rooms and player changing room. South of the Popular Stand was the gym, constructed of concrete with sheet panel roof. There was a bar and shop, located south of the Main Stand. The bar had a conference room above.

Two hundred and twenty-nine high resolution digital photographs were taken to record the exterior and interior of the football ground.

1. Introduction

1.1 The Historic Building Recording has been commissioned by Persimmon Homes to record Bootham Crescent Football Ground, Grosvenor Road, York in advance of its demolition, to provide a permanent archive record of the building to inform future study (SE 62672 51224: Fig. 1).

1.2 In accordance with the recommendations of the National Planning Policy Framework (July 2021: Para 204, 58) states that the *'Local Planning Authorities should require developers to record and advance understanding of the significance of any heritage assets to be lost (wholly or in part) in a manner proportionate to their importance and the impact, and to make this evidence (and any archive generated) publicly accessible [Copies of evidence should be deposited with the relevant historic environment record, and any archives with a local museum or other public depository].'*

1.3 Planning Permission 19/00246/FUL was granted, for the erection of a residential development on the site, and condition 7 stated *'The development shall be carried out in accordance with the MAP archaeological practice WSI historic building recording Version B130520. No demolition shall take place until the photographic recording as proposed in the WSI has been carried out in accordance with this report. A copy of a report shall be deposited with City of York Historic Environment Record and digital archive images with ADS to allow public dissemination of results within 3 months of completion or such other period as may be agreed in writing with the Local Planning Authority. Reason: In accordance with Section 16 of NPPF and Policy D7 of the Publication Draft York Local Plan as the buildings on this site are of historic and social interest and must be recorded prior to demolition'.*



Figure 1. Site Location. Scale 1:25,000

- 1.4 A Written Scheme of Investigation (WSI) was approved by the City of York Council City Archaeologist in May 2020 (Appendix 2). The WSI (MAP 2020) had been produced to comply with the City of York Council Site Specific Requirements for a 'Level 2 Building Record of all existing structures (external and internal where appropriate)' and with 'Particular attention should be paid to the original stands which date to the 1930s and any evidence of the use of the tunnel at the back of the Popular Stand as an air raid shelter. The ground as a whole should be captured by photographic record and all original features should be recorded'. The Building Record was undertaken on the 15th and 16th December 2021.

-
- 1.5 This report was funded by Persimmon Homes (Yorkshire).
- 1.6 All maps within this report have been produced from Ordnance Survey with the permission of the Controller of Her Majesty's Stationery Office, Crown Copyright. License No. AL 50453A.

2. Site Description

- 2.1 The proposed development area was formerly the football stadium for York City Football Club with associated stands, hospitality and administrative buildings (Grid Ref. SE 5990 5290), located in the Clifton area of York, c. 1km north of York City Centre.
- 2.2 The stadium buildings surround the grass pitch and are constructed of brick, concrete and glass with a car park to the east of the main stand. Current vehicular access to the site is via Grosvenor Road, on the south-eastern corner of the site.
- 2.3 The site is 1.705 hectares in size with the grass pitch area is c. 0.6 hectares, standing at an elevation of approximately 12.5m AOD.

3. Historical Background

- 3.1 York Football Ground is a Monument on the City of York HER (City of York HER Ref. MYO3883), a 2002 Desk Based Assessment is an Event (City of York HER Ref. EYO609) and the City of York Historic Landscape Characterisation describes the Proposed Development Area as '*Kit Kat Stadium, 1930's Football Ground formerly a Cricket Ground*' (City of York HER Ref. HYO22569).

An application to Historic England to list Bootham Crescent was refused in November 2020 (www.heritagegateway.org.uk: Ref. 1473520) stating "*Based on the information provided and with reference to the Principles of Selection (DCMS, 2018) and our Listing Selection Guides, Bootham Crescent Football Ground does not merit listing for the following principal reasons:*

- *in a national context the design does not demonstrate exceptional quality or innovation for the period;*
- *later alterations have diminished the integrity of the stands as examples of 1930s football architecture;*
- *those wooden seats that survive are now relatively rare, but not as old as those at Craven Cottage (thought to be original and dating from 1905), and their rarity does not outweigh the factors above."*

3.2 The 1853-4 First Edition Survey Map depicted the site, west of the York and North Midland Railway, which was opened in 1845, as a single plot of open land bordered to the north and west by strip fields and Asylum Lane to the south, which provided access to the York Lunatics Hospital.

3.3 By the 1892 Edition Ordnance Survey map, the site was being used as a cricket ground with a single building sited along the north eastern boundary. Newborough Terrace had been built and a narrow alley separates the cricket ground from the houses. A school has been constructed along the northern boundary of the site.

3.4 In the 1890's York Wednesday, who claimed to be the oldest club in the city, along with the teams from St Clements, Heworth, Ebor Wanderers and school teams from Bootham, St Johns and Elmfield. The demand for a representative club from the city resulted in the creation of the York City

Football Club in 1908. The club's home ground was in Holgate Road at the end of Lindley Street and Murray Street. The ground's capacity was 300 and the stands came from York Racecourse. Average success in 1910-1911 resulted in the creation of a professional club in 1912.

- 3.5 The 1909 Ordnance Survey Map Extract depicted the site at Bootham Crescent as the Cricket Ground with a Pavilion in the south-western corner of the site. York City Football Club's ground was a plot of rough land in Burton Stone Lane, known as Field View. The move to Field View saw the club's acceptance into the Midland League where York City played until 1915. In 1917, York City football club went into liquidation.
- 3.6 After the First World War there was a resurgence in demand for a senior team to represent the city of York. On May 6th 1922, the decision was made to form the York City Football and Athletic Club Limited. The club was once again accepted into the Midland League. The 1927 application to the Football League was not accepted; but in 1929 York City was accepted into the Football League's Third Division North. From 1922 - 1932 York City played at their ground at Fulfordgate. The problems of public transport access to Fulfordgate contributed to dwindling crowds in the late 1920's. Action to rectify the problems resulted in the move of York City to Bootham Crescent in 1932.
- 3.5 By the 1931 Edition Ordnance Survey map, the Cricket ground at Bootham Crescent had a larger pavilion and a 'Bowling Green' is shown in the northern corner of the site. To the east of the site Lumley Barracks and Colton's Hospital (Almhouses) were depicted.

-
- 3.6 The new ground, previously used by York Cricket Club, had to be drained and then developed to the designs provided by Ward & Leckenby and constructed by William Birch and Sons. Two stands were erected, the Main Stand to the east and the Popular to the west. The ground was officially opened on the 31st August 1932 under a lease hold arrangement. The Directors decision to move was backed up by marked increases in crowd attendance.
- 3.7 The 1937 Ordnance Survey Map depicted the transformation of the site from a cricket ground to a football stadium. By 1937, Asylum Road had been renamed Grosvenor Road.
- 3.8 In Gas Masks for Goal Posts (Rippon 2011), the author stated during the second world war '*a tunnel at the back of the Popular Stand was utilised as an air-raid shelter for the staff and pupils of the nearby Shipton Street School*' and that the ground suffered '*slight damage*' when a bomb landed on houses in Shipton Street in April 1942.
- 3.9 In 1948, the ground was purchased for £4,076. The whole ground and buildings were listed at £7,204 in 1949. Post-war improvements consisted in the concreting of the banking, loudspeakers were installed, drainage work was undertaken, concrete terraces were built in the Popular Stand and in 1955 the Main Stand was extended towards Shipton Street. By 1958, the ground had a capacity of 23,600. In 1959, flood lighting was installed. And, in 1974, seats were installed in the Popular Stand. In 1980 the floodlights were updated and in 1981 a gymnasium was built at the Grosvenor Road End.

3.10 Improvements in crowd management resulted in the building of eight new turnstiles at the Shipton Street end in 1985 along with the refurbishment of the dressing rooms, referee's room and the physiotherapist's treatment room. A Club Shop was built in 1985. In 1986-7 hospitality boxes were built into the Main Stand. In 1991, the Shipton Street End, north of the pitch, was covered and renamed the David Longhurst Stand, in honour of David Longhurst, a York City player who collapsed and died on the pitch the previous year. Further improvements were made to the ground in the 1990's. York City Football Club moved out of Bootham Crescent and played its first game at the LNER Community Stadium at Monks Cross in February 2021.

4. Aims and Objectives

4.1 The Aim of the Historic Building Recording of the Bootham Crescent Football Ground was to :-

- Provide a systematic historic building recording of the buildings, stands and other structures at the football ground prior to demolition

4.2 With the objective to:-

- to determine the original nature, date and survival of any earlier structure and fabric and their development to present day

5. Methodology

5.1 The interior and exterior of the Football Ground and buildings were observed, with notes taken on the layout, construction materials and architectural details. A photographic record was undertaken using a 24 megapixel digital camera.

-
- 5.2 The photographic record for the building record comprised 209 digital shots. The Photographic Record of the buildings are included on a film register noting file name, location of shot, direction of the shot, and a brief description of the subject (Appendix 1). The figures of the Main Stand, Popular Stand Tunnel and Gym are based on the drawing in the demolition report supplied by Persimmon. The room designations on the figures for the 1922 Bar, Club Shop and Main Stand have been used in the text below (Paras 6.8-6.9).
- 5.3 Metadata was included on all digital files including name of site, description, tags (Building Record), comments (Planning Reference and National Grid Reference), Author (Photographer) and Copyright. All digital photographs will be archived on the Archaeological Data Service.

6. Results

- 6.1 The Building Record was undertaken at Bootham Crescent Football Ground on the 15th & 16th December 2021. The weather conditions were bright and sunny with occasional cloud. The interior and exterior of the Football Ground and Buildings were photographed.

6.2 *Football Ground: Exterior Description (Figs. 2 & Pls. 1-34)*

- 6.2.1 The Football Ground fronted onto Grosvenor Road, with a main entrance on the corner of Grosvenor Road and Newbrough Road into the car park, Main Stand and Club Shop. On Grosvenor Street, there were three entrances and turnstiles with access to the Popular Stand, the Grosvenor Road End (standing only) and to the Gym. The turnstiles were '*Deluce's Patent Rush Prevention Turnstile, sole makers W. T. Ellison & Co. Limited, Irlam in the High Manchester*' (Pl. 22). There were turnstiles and a gate at the north end of the

car park. At the north end to the rear of the David Longhurst Stand was a gate and pedestrian access to Shipton Road.

6.2.2 The main wall on Grosvenor Road was brick, English Garden Wall Bond (3 stretcher courses to one header) to the east around Gate C and concrete block construction behind the Grosvenor Road End with concrete capping slabs. The boundary wall west of the Gym and Popular Stand was brick (stretcher bond). The terrace was standing only, comprising fifteen to twenty-two steps, formerly with steel rails.

6.2.3 The wall to the east and south of the carpark was brick and the boundary west was c. 1.70m high, constructed in English Garden Wall bond (3 stretcher to one header course) with tile capping. There was metal sheeting west of the David Longhurst Stand and low brick walls and wooden fencing behind the stand. West of the Popular Stand is a 1.7m high brick wall in English Garden Wall Bond with concrete block constructed wall above.

6.2.4 The pitch had the Main Stand and 1922 Bar and shop to the east, the concrete stepped banking at the Grosvenor Road End to the south, continuing round to the north to the Popular Stand, on the west side of the pitch. The David Longhurst Stand was to the north of the pitch. To the north of the Main Stand was the First Aid Centre. North of the Popular Stand was a Store.

6.3 *1922 Club Bar and Shop: Exterior Description (Fig. 2 & Pls. 35-37)*

6.3.1 The 1922 Bar was a two storey brick built building with flat roof at the south-eastern corner of the ground accessed from Grosvenor Road, the pitch and the car park. South of the Main Stand and north of Grosvenor Road and west of the car park was the Club Shop, which was one storey high. The storeroom to the rear of the club shop and the 1922 bar were the same build

(brick laid in stretcher bond) with flat roofshe adjoining Club Shop was a later addition (brick laid in stretcher bond) with an uneven gable roof (shorter pitch to rear).

6.3.2 On the south elevation ground floor, the bar had two entrances onto Grosvenor Road, the main entrance with stone surround and a service entrance to the west. There was a blocked window on the south elevation between the door and two blocked windows in the shop storeroom to the east (Pl. 35). On the first floor of the bar, there were three windows on the south elevation. On the ground floor, there were three large windows in the bar facing the pitch (west elevation). On the first floor, there was one window facing the pitch (west elevation) and one window on the north elevation.

6.3.3 The east elevation of the shop included an office, store and WCs. The shop had two large windows on either side of the door, then the office door and window and then the door into the WC block (Pl. 36). On the north-east elevation was a snack bar with hatch and door and then to the west was the rear door into the bar.

6.4 *Main Stand: Exterior Description (Fig. 2 & Pls. 38-49)*

6.4.1 The east elevation of the main stand was modern, constructed of panelled steel frame construction and brick. To the north and south, the three storey high extensions were open on the ground floor with jettied first and second floor panelled construction with large windows and a low pitched hipped slate roof and five gabled bays (Pls. 38-43). Between the three storey high steel frame extensions was a brick built one and a half storey structure with single pitch roof, draining to the east.

-
- 6.4.2 The original east elevation of the Main Stand was visible beneath the modern extensions. On the ground floor beneath the southern extension were two windows and two doors and on the first floor, and two windows beneath the second floor extension to the south, behind an external stair case (Pl. 39). There were three original chimney stacks, one on the east side of the south elevation and two above the one and a half storey extension on the original east elevation of the Main Stand (Pls. 39-41). On the ground floor, beneath the northern extension were a blocked window and three doors (Pls. 41-42). The doors at the north end lead into a staircase to the family room on the first floor.
- 6.4.3 The southern extension on the east elevation had an external staircase from the first floor to the car park (Pls. 39 & 44). The southern extension was supported by six steel stanchions, the southernmost one supporting the second floor and the remaining five supporting the first floor. The southern extension had two gabled bays on the second floor with a single pitch roof on the first floor between them.
- 6.4.4 The one and a half storey, brick-built extension had three entrances and six windows on the ground floor. Above the main entrance and York City Football Club sign, were four small windows. To the north were three protruding bays on the first floor with bay windows and lead flashing above (Pls. 40 & 41).
- 6.4.5 The northern three storey extension had an entrance on the ground floor at the south end, then was open with five steel stanchions to the north supporting the first and second floors. There were six windows on the first floor, then three gabled bays on the second floor (Pl. 42).

6.4.6 The main stand had a brick side walls with glass partitions and a sloping metal sheet roof supported by a steel frame over the concrete terrace (Pls. 14, 38, 42, 44, 46 & 48). The roof was a single pitch, draining to the east. Most of the seating had been removed the time of the survey. There were four separate areas with entrances for fans onto the terraces. The entrance for the players onto the pitch was located below the second from the south fan entrance, level with the pitch and four steps below the fan entrance (Pl. 48).

6.4.7 There had been fifteen rows of seating: six rows of plastic seats on the pitch side and then nine rows of wooden seats (A-J) above, as seen in 2018. With fifteen steps up to the four fan access tunnels

6.4.8 On the east elevation, there had also been a war memorial 'in memory of all York City players who gave their lives in service of their country (photographed in 2018) included Sergeant Albert Bonass (RAF), Sergeant Leonard Milner (Seaforth Highlanders), Sergeant G. Reynolds (Household Cavalry), Private Samuel Roberts (West Yorkshire Regiment) and Sergeant Eric Robertson (east Lancashire Regiment), now at the LNER Stadium.

6.5 *David Longhurst Stand: Exterior Description (Fig. 2 & Pls. 50-53)*

6.5.1 The stand was built of concrete terrace, concrete block rear wall and steel supporting a sheet roof. The roof was a single pitch, draining to the back (north). There was an exit at the rear of the stand around to a toilet block. The concrete terrace comprised twenty-six steps (13 rows of seats) with a ramp on the east side, connecting to the turnstiles at the north end of the car park and the terraces continuing to the Popular Stand on the west side of the pitch.

6.6 *Popular Stand: Exterior Description (Figs. 2-3 & Pls. 54-64)*

6.6.1 The Popular Stand was located opposite the Main Stand on the west, constructed in 1932 of a steel frame structure supporting a metal sheet roof. The roof was a single pitch, draining to the west. Beneath the Popular Stand was an access tunnel beneath to the terraces and Shipton Road end (Fig. 3 & Pls. 61-64). There were two stairs from the access tunnel onto the terraces, with 15 steps up to the tunnel from the pitch. The concrete terrace was 26 steps up from the pitch, which formerly had thirteen rows of plastic seating (A-N).

6.7 *Gym: Exterior Description (Fig. 2 & Pls. 65-68)*

6.7.1 The gym was a modern concrete block and steel framed building with a low pitch metal sheet roof with entrances in the south and west elevations.

6.8 *1922 Club Bar and Shop: Interior Description (Fig. 4 & Pls. 69-74)*

6.8.1 The ground floor of the 1922 Club Bar had a pitch (west) side bar with seating on the west side and bar (094), toilets (092 & 96) and kitchen (095) to the east. The bar had a rear exit to the north into the car park south of the Main Strand. South of the bar was the main hall (090) with access onto Grosvenor Road and stairs to the first floor. South of the bar was the beer cellar (093) with a separate access onto Grosvenor Road)

6.8.2 The first floor of the 1922 Bar was a large room (087) off the hall (088).

6.8.3 The shop (103) had an office to the north (101) and store rooms to the west (097-100 & 102).

6.9 *Main Stand: Interior Description (Figs. 5-7; Pls. 65-117)*

6.9.1 The ground floor of the Main Stand, there were two entrances were located in the centre block on the north and south, facing the car park. The south entrance (062) lead to stairs, the rear corridor (065) to the changing rooms (063-068) and north into the laundry room (085). North of the laundry rooms were offices (075, 077 & 079-083). The north entrance (078) connected to the rear corridor (065), with stairs to the first and second floor and offices (071-072 & 076 to the north). North along the rear corridor were offices, storage and the physiotherapists room (057: Pl. 92).

6.9.2 The home team changing rooms had attached WCs, two baths and showers (063, 064 & 065; Pls. 96-99). The Away team changing room had a bath, showers and WCs (068; Pls. 101 & 102).

6.9.3 On the west wall of the corridor (065), opposite the home changing room was a blocked window (Pl. 100) This was the original 1932 west wall of the Main stand, blocked when extra pitch side seating was installed.

6.9.4 On the first floor were two hospitality suites (040 & 051). The southern suite (040) had an external access to the south (Pl. 104). North of suite (040) was a corridor to stairs to the ground and second floor (039, 043, 045 & 048) , toilets and storage (041-0142, 044, 046-047 & 049-050). North of the corridor was the second hospitality suite (051: Pls. 107-108). To the north of this was the main stairs (052), to the ground and second floor (Pl. 109-110). North of the stairs was a kitchen (053) and the family room with shop (Pls. 111-113) and stairs to the ground floor at the north-west corner (054). The southern hospitality suite (038), on the second floor (Pls. 114-115), was accessed from the south stairs (045; Pls. 106). Three hospitality suites (033-035) on the second floor (Pls. 117-121) were accessed from the main stairs

(037/052/074). There was also a kitchen (036) on the south end of the corridor.

6.10 *Gym: Interior Description (Fig. 7 & Pls. 122-124)*

6.10.1 The gym was a large open indoor training facility with access to the south and west.

7. **Conclusions**

7.1 The Football Ground was specifically built for York City Football Club with two stands, the Main Stand to the east and the Popular Stand to the west. During nearly ninety years as a club, this football ground had been altered and extended between 1932 and the 2002. All the alterations were well documented.

7.2 The terraces were concreted and the Main Stand had been extended to the north in the 1950's. The change in concrete used was visible on the terraces. The popular stand had become seated by the 1970s. The smaller narrower steps on its terraces match those of the Grosvenor Road end and the Shipton Road end (later the David Longhurst Stand). The two storey extension to the Main Stand, for offices, improved fan and player facilities and hospitality suites, and the David Longhurst Stand at the Shipton Road end were built in the 1990s. A ramp was built as access to the rear from the turnstiles at the north end of the car park. The Club Shop and turnstiles at the north end of the carpark were also later additions.

7.3 There were original features remaining of the 1932 Main Stand. On the ground floor and the first floor at the south end of the new extension, there

were three windows in the rear wall (east elevation). There was also a blocked window.

- 7.4 The Popular Stand Clock and the War Memorial have been relocated to the LNER Stadium in May 2021 (www.yorkpress.co.uk).

8. Bibliography

Chartered Institute for Archaeologists. 2021 *Standard and Guidance for the Archaeological Recording of Buildings and Structures*. Reading: Institute for Archaeologists.

Chartered Institute for Archaeologists. 2021 Code of Conduct. Reading: Chartered for Archaeologists.

Historic England 2016 Understanding Historic Buildings. A Guide to Good Recording Practice.

Historic England 2017 Sports and Recreation Buildings Listing Selection Guide.

MAP 2018 York City Football Ground, Bootham Crescent, York: Archaeology and Heritage Assessment. MAP Archaeological Practice.

Rippon, A. 2011 Gas Masks for Goal Posts. The History Press

9. List of Contributors

Photographer, Report and Plates: Kelly Hunter

Illustrations: Max Stubbings

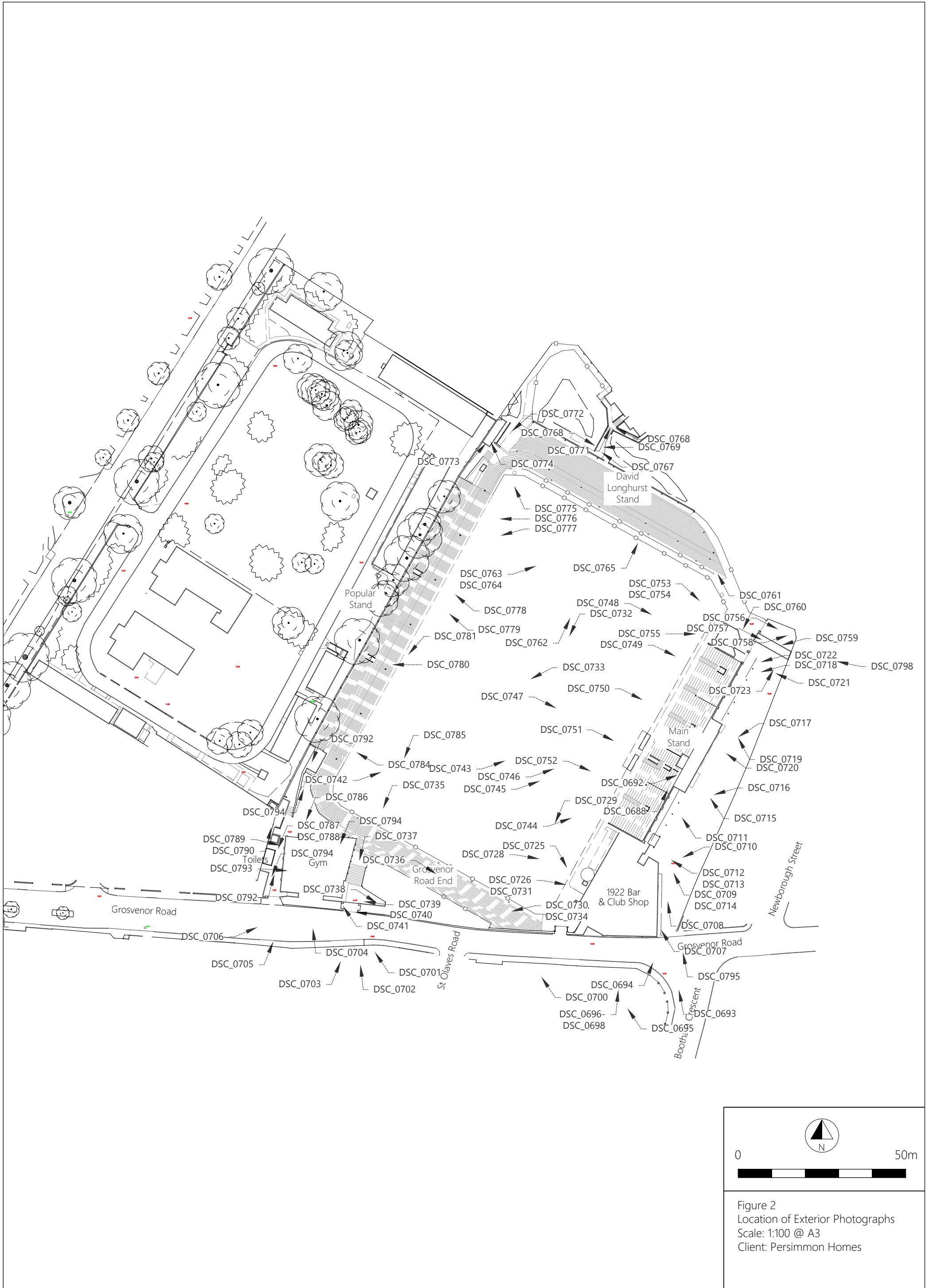
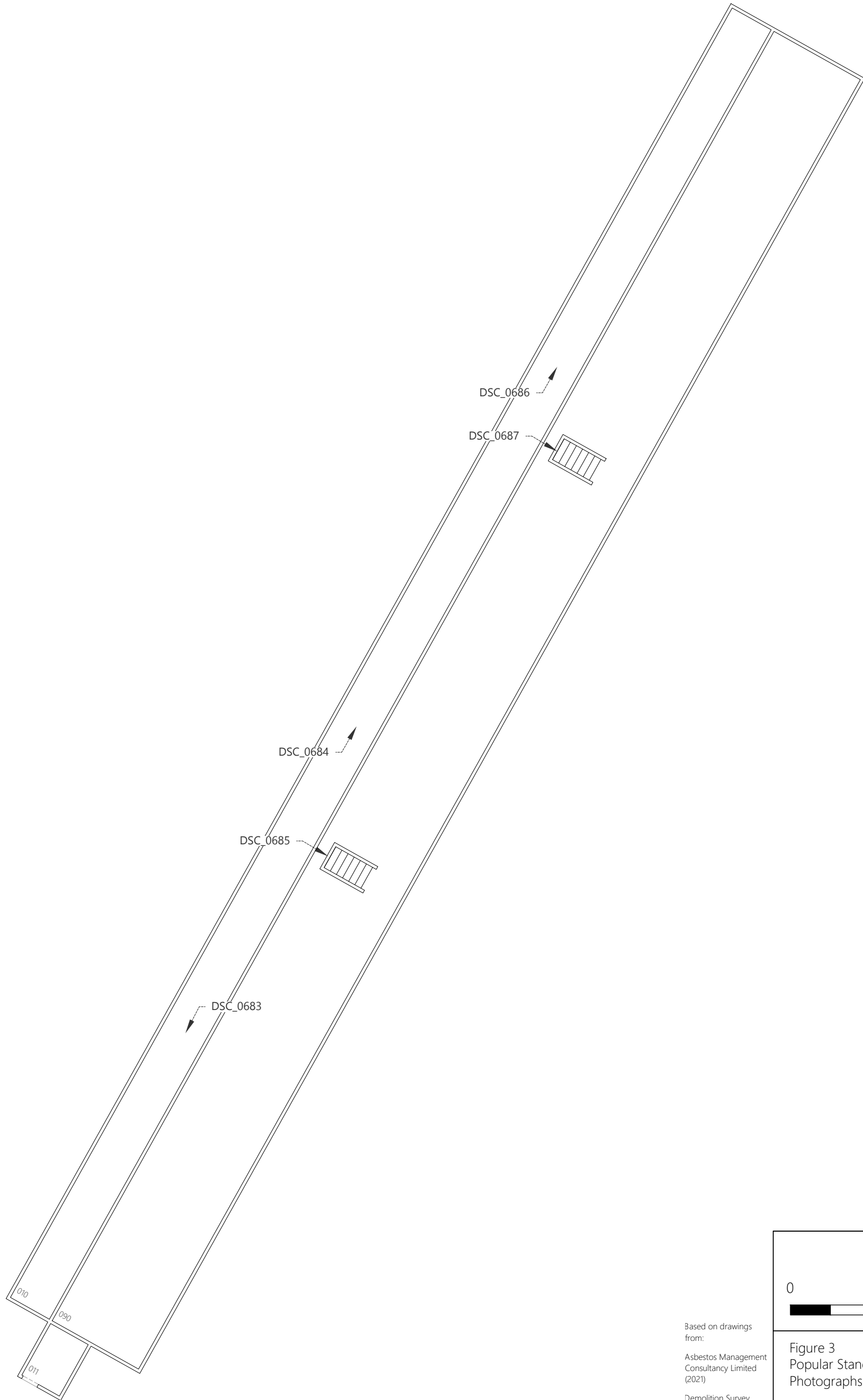



Figure 2
Location of Exterior Photographs
Scale: 1:100 @ A3
Client: Persimmon Homes



0  50m

Based on drawings from:
Asbestos Management Consultancy Limited (2021)
Demolition Survey, Assessment and Register Of Asbestos Containing Materials

Figure 3
Popular Stand Tunnel: Location of Photographs
Client: Persimmon Homes



Based on drawings from:
Asbestos Management Consultancy Limited (2021)
Demolition Survey, Assessment and Register Of Asbestos Containing Materials

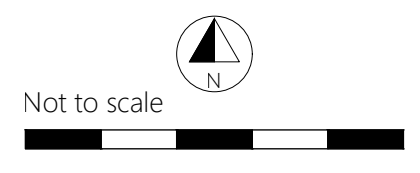


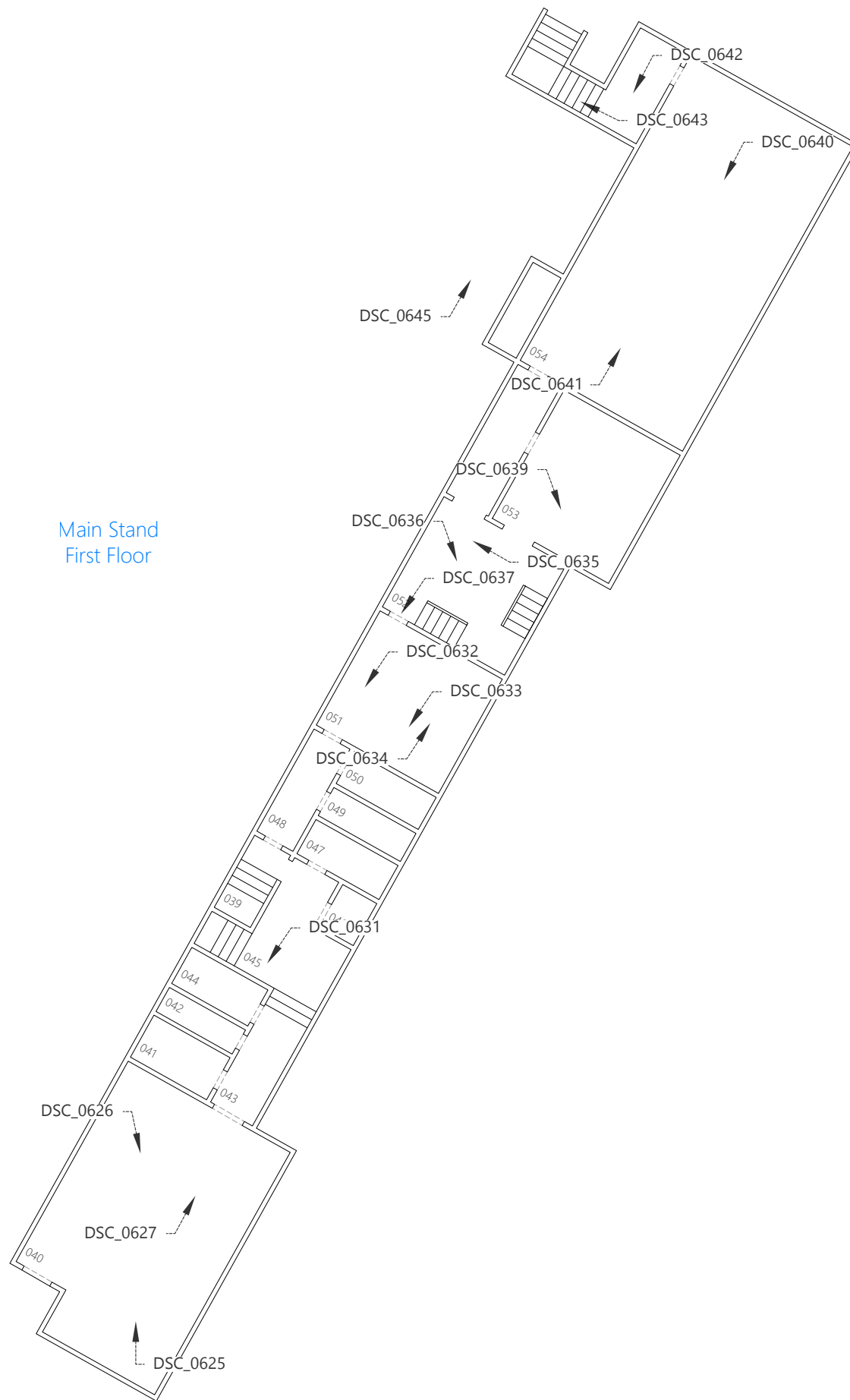
Figure 4
1922 Bar & Club Shop Interior:
Location of Ground & First Floor
Photographs
Client: Persimmon Homes



Not to scale

Based on drawings from:
Asbestos Management Consultancy Limited (2021)
Demolition Survey, Assessment and Register Of Asbestos Containing Materials

Figure 5
Main Stand Interior: Location of Ground Floor Photographs
Client: Persimmon Homes



Main Stand
First Floor

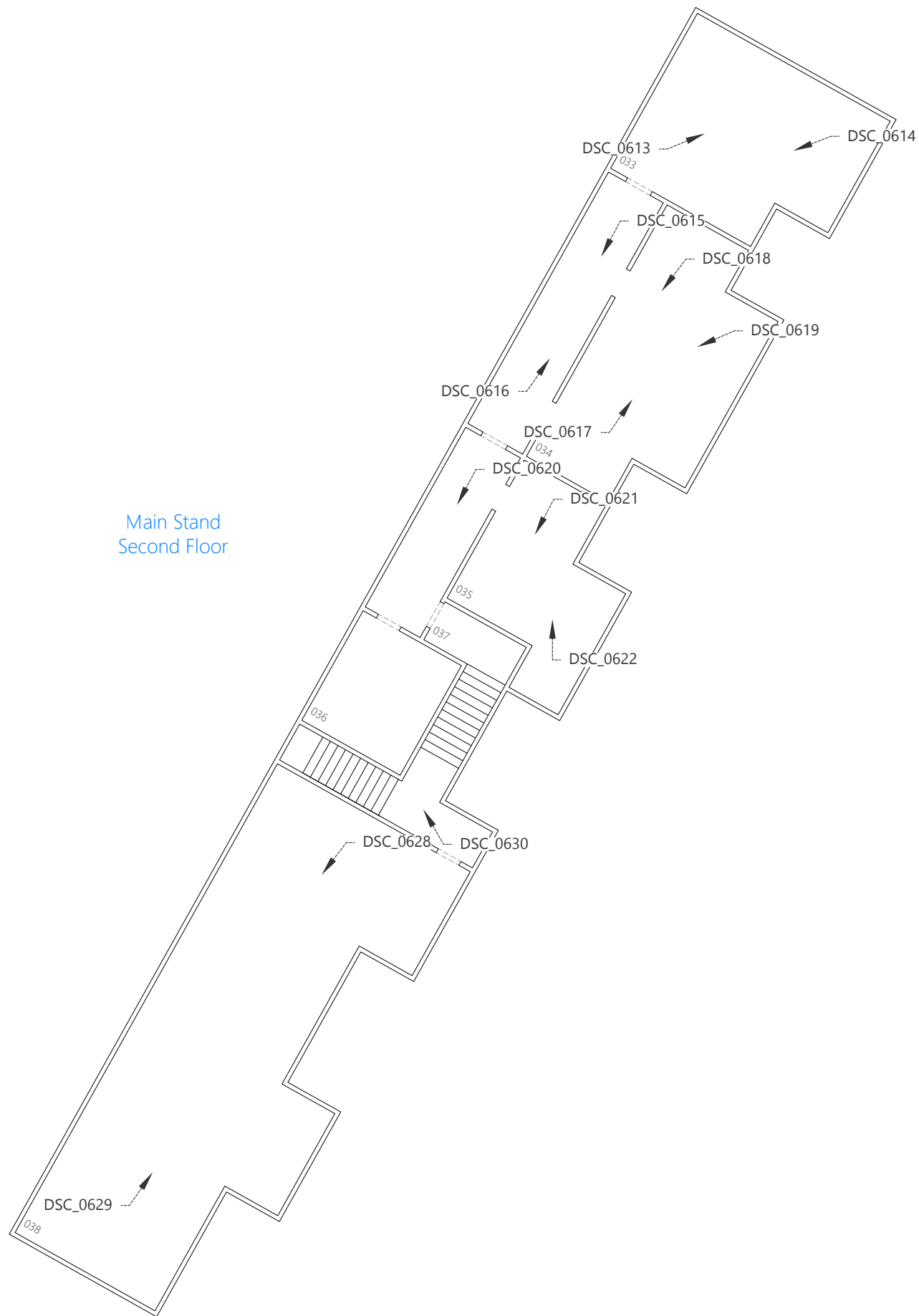


Not to scale



Based on drawings
from:
Asbestos Management
Consultancy Limited
(2021)
Demolition Survey,
Assessment and
Register Of Asbestos
Containing Materials

Figure 6
Main Stand Interior: Location of First
Floor Photographs
Client: Persimmon Homes

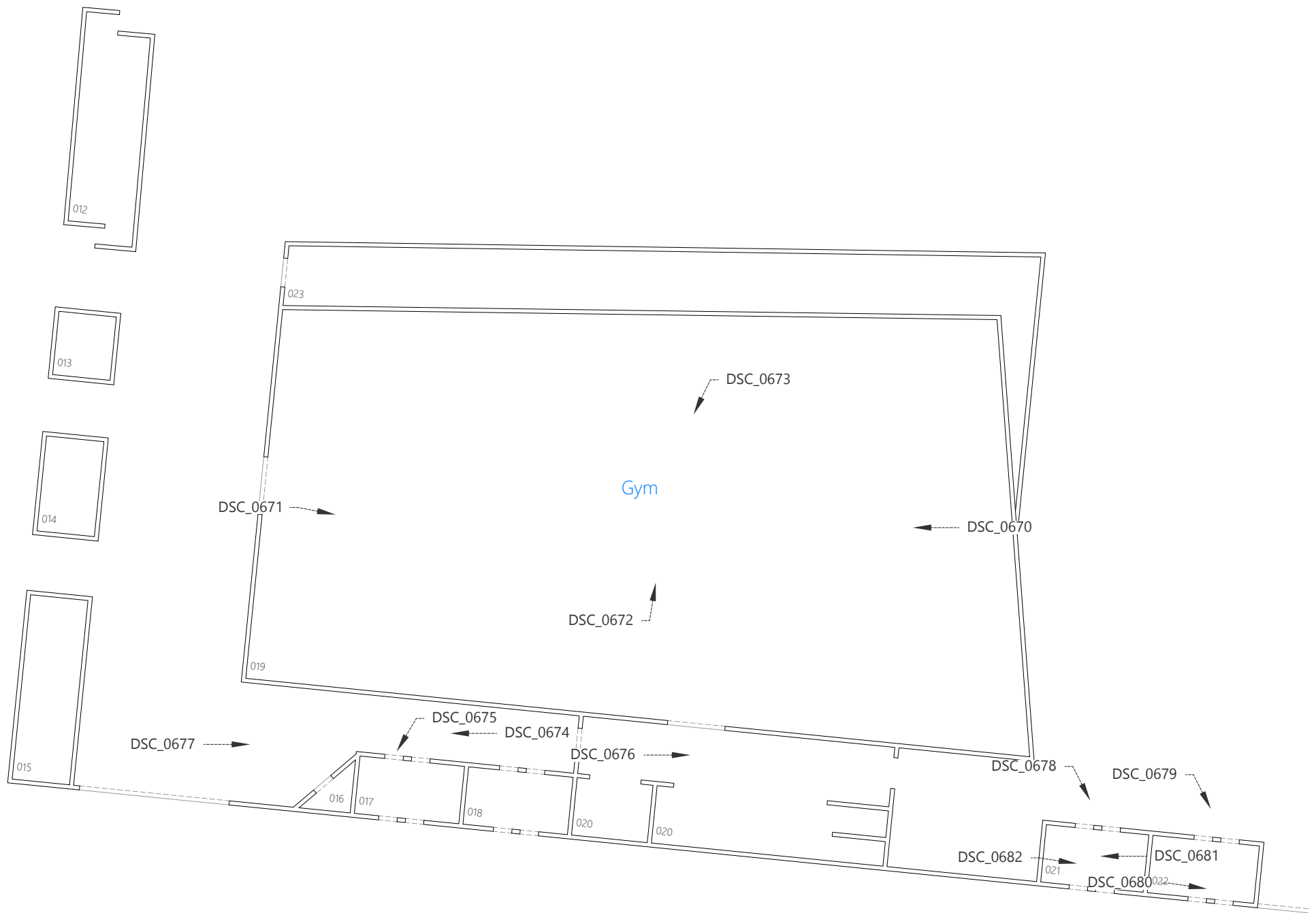


Not to scale



Based on drawings
from:
Asbestos Management
Consultancy Limited
(2021)
Demolition Survey,
Assessment and
Register Of Asbestos
Containing Materials

Figure 6
Main Stand Interior: Location of
Second Floor Photographs
Client: Persimmon Homes



Not to scale



Based on drawings from:
Asbestos Management Consultancy Limited (2021)
Demolition Survey, Assessment and Register Of Asbestos Containing Materials

Figure 8
Gym Interior: Location of Photographs
Client: Persimmon Homes



Plate 1. Bootham Terrace Football Club (DSC_0706). Facing East.



Plate 2. Bootham Terrace Football Club (DSC_0693). Facing North.



Plate 3. Bootham Terrace Football Club (DSC_0708). Facing North.



Plate 4. Bootham Terrace Football Club (DSC_0695). Facing North-west.



Plate 5. Entrance onto Grosvenor Road End (DSC_0699). Facing North.



Plate 6. Grosvenor Road Boundary Wall (DSC_0700), Facing West.



Plate 7. Entrances on Grosvenor Road (DSC_0701). Facing North-west.



Plate 8. Entrances on Grosvenor Road (DSC_0704). Facing North-west.



Plate 9. Entrances on Grosvenor Road (DSC_0705). Facing North.



Plate 10. Entrances at north end of car park (DSC_0723). Facing North.



Plate 11. Entrances at north end of car park (DSC_0721). Facing West.



Plate 12. Entrances at north end of car park (DSC_0756). Facing East.



Plate 13. Entrances at north end of car park (DSC_0759). Facing South-west.



Plate 14. Entrances at north end of car park (DSC_0723). Facing South.



Plate 15. Entrance at north end of car park (DSC_0758). Facing East.



Plate 16. Entrances at east side of Grosvenor Road End (DSC_0725). Facing South.



Plate 17. Entrances at east side of Grosvenor Road End (DSC_0731). Facing South-east.



Plate 18. Entrances at centre of Grosvenor Road End (DSC_0737). Facing South.



Plate 19. Entrances at east side of Grosvenor Road End (DSC_0738). Facing South-east.



Plate 20. Turnstile at Grosvenor Road End (DSC_0681). Facing West.



Plate 21. Turn-style at Grosvenor Road End (DSC_0682). Facing East.

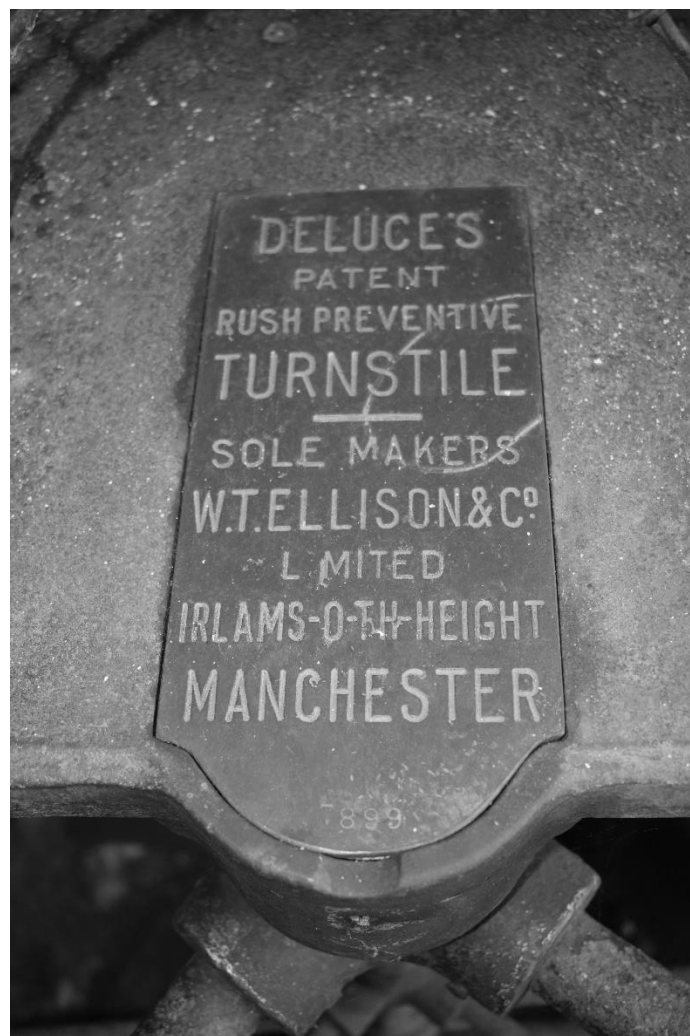


Plate 22. Maker's Plate on Turnstile (DSC_0680). Facing West.



Plate 23. Entrance at centre of Grosvenor Road End (DSC_0740). Facing West.



Plate 24. Entrance at west side of Grosvenor Road End (DSC_0794). Facing South.



Plate 25. Pitch, Main Stand and David Longhurst Stand (DSC_0742). Facing North-east.



Plate 26. Pitch and Grosvenor Road End (DSC_0732). Facing South.



Plate 27. Grosvenor Road End (DSC_0730). Facing West.



Plate 28. Grosvenor Road End (DSC_0734). Facing West.



Plate 29. Grosvenor Road End (DSC_0734). Facing East.



Plate 30. Grosvenor Road End (DSC_0784). Facing West.



Plate 31. Terraces between the Popular and David Longhurst Stands (DSC_0775). Facing West.



Plate 32. Store (DSC_0774). Facing North-west.



Plate 33. Access to rear of David Longhurst Stand (DSC_0770). Facing West.



Plate 34. Toilet Block behinds David Longhurst Stand (DSC_0771). Facing North.



Plate 35. 1922 Bar: Exterior South Elevation (DSC_0697). Facing North.



Plate 36. Club Shop: Exterior East Elevation (DSC_0710). Facing South-west.



Plate 37. 1922 Bar: Exterior West Elevation (DSC_0726). Facing East.



Plate 38. Main Stand: Exterior West and South Elevations and Club Shop: Exterior West Elevation (DSC_0727) . Facing North-east.



Plate 39. Main Stand: Exterior East Elevation (DSC_0714). Facing North-west.



Plate 40. Main Stand: Exterior East Elevation (DSC_0715). Facing North-west.



Plate 41. Main Stand: Exterior East Elevation (DSC_0717). Facing South-west.



Plate 42. Main Stand: Exterior East and North Elevations (DSC_0718). Facing South-west.



Plate 43. Main Stand: Exterior East Elevation (DSC_0719). Facing North-west.



Plate 44. Main Stand: Exterior North and East Elevations (DSC_0709). Facing North-west.



Plate 45. Main Stand: Exterior North Elevation (DSC_0722). Facing South-west.



Plate 46. Main Stand: Exterior West and South Elevations (DSC_0743). Facing North-west.



Plate 47. Main Stand: Exterior West and North Elevations (DSC_0748). Facing South-east.



Plate 48. Main Stand: Players Entrance and Commentary Box (DSC_0751). Facing East.



Plate 49. Main Stand: Commentary Box (DSC_0693). Facing North-east.



Plate 50. David Longhurst Stand: Exterior South and East Elevations (DSC_0761). Facing North-west.



Plate 51. David Longhurst Stand: Exterior South Elevation (DSC_0764). Facing North.



Plate 52. David Longhurst Stand: Access to Rear (DSC_0766). Facing North.



Plate 53. Rear Access to David Longhurst Stand (DSC_0768). Facing East.



Plate 54. Popular Stand: Exterior North and East Elevations (DSC_0776). Facing South-west.



Plate 55. Popular Stand: Exterior South and East Elevations (DSC_0782). Facing Northwest.



Plate 56. Popular Stand: Exterior North Elevation and Tunnel (DSC_0772). Facing South.



Plate 57. Popular Stand: Exterior Terraces (DSC_0781). Facing South-west.



Plate 58. Popular Stand Entrance to Tunnel (DSC_0780). Facing West.



Plate 59. Popular Stand: Exterior South Elevation (DSC_0785). Facing North.



Plate 60. Popular Stand: Steps from the tunnel (DSC_0792). Facing South.



Plate 61. Popular Stand Tunnel (DSC_0686). Facing North.



Plate 62. Popular Stand Tunnel Stairs (DSC_0685). Facing South-east.



Plate 63. Popular Stand Tunnel Stairs (DSC_0687). Facing East.



Plate 64. Popular Stand Tunnel (DSC_0684). Facing South.



Plate 65. Gym: Exterior East Elevation (DSC_0739). Facing West.



Plate 66. Gym: Exterior East and South Elevations (DSC_0741). Facing West.



Plate 67. Gym: Exterior West Elevation (DSC_0788). Facing South.



Plate 68. Gym: Exterior North Elevation (DSC_0789). Facing South-east.



Plate 69. 1922 Bar: Interior Ground Floor (DSC_0568). Facing North.



Plate 70. 1922 Bar: Interior Ground Floor (DSC_0568). Facing South.



Plate 71. 1922 Bar: Interior Ground Floor (DSC_0570). Facing South-east.



Plate 72. 1922 Bar: Interior Ground Floor (DSC_0575). Facing North-east.



Plate 73. 1922 Bar: Interior Ground Floor (DSC_0579). Facing North.



Plate 74. 1922 Bar: Interior Ground Floor (DSC_0581). Facing North.



Plate 75. 1922 Bar: Interior Ground Floor (DSC_0585). Facing East.



Plate 76. 1922 Bar: Interior Ground Floor (DSC_0586). Facing West.



Plate 77. 1922 Bar: Interior Ground Floor (DSC_0587). Facing South-west.



Plate 78. 1922 Bar: Interior Ground Floor (DSC_0589). Facing North-west.



Plate 79. 1922 Bar: Interior Stairs (DSC_0590). Facing South-west.



Plate 80. 1922 Bar: Interior First Floor (DSC_0593). Facing South-west.



Plate 81. 1922 Bar: Interior First Floor (DSC_0594). Facing North-west.



Plate 82. 1922 Bar: Interior First Floor (DSC_0591). Facing South-west.



Plate 83. 1922 Bar: Interior First Floor (DSC_0592). Facing South-east.



Plate 84. Club Shop: Interior (DSC_00597). Facing North-west.



Plate 85. Club Shop: Interior (DSC_0598). Facing East.



Plate 86. Club Shop: Interior (DSC_0599). Facing West.



Plate 87. Club Shop: Interior (DSC_0600). Facing North-west.



Plate 88. Club Shop: Interior (DSC_0603). Facing East.



Plate 89. Club Shop: Interior (DSC_0607). Facing North.



Plate 90. Main Stand: Interior Ground Floor (DSC_0646). Facing North.



Plate 91. Main Stand: Interior Ground Floor (DSC_0650). Facing South.



Plate 92. Main Stand: Interior Ground Floor (DSC_0647). Facing East.



Plate 93. Main Stand: Interior Ground Floor (DSC_0653). Facing West.



Plate 94. Main Stand: Interior Ground Floor (DSC_0655). Facing South.



Plate 95. Main Stand: Interior Ground Floor (DSC_0659). Facing West.



Plate 96. Main Stand: Interior Ground Floor (DSC_0661). Facing East.



Plate 97. Main Stand: Interior Ground Floor (DSC_0663). Facing South-east.



Plate 98. Main Stand: Interior Ground Floor (DSC_0664). Facing North-west.



Plate 99. Main Stand: Interior Ground Floor (DSC_0665). Facing South.



Plate 100. Main Stand: Interior Ground Floor (DSC_0655). Facing West.



Plate 101. Main Stand: Interior Ground Floor (DSC_0668). Facing West.



Plate 102. Main Stand: Interior Ground Floor (DSC_0669). Facing East.



Plate 103. Main Stand: Interior First Floor (DSC_0625). Facing North.



Plate 104. Main Stand: Interior First Floor (DSC_0626). Facing South.



Plate 105. Main Stand: Interior First Floor (DSC_0627). Facing North.



Plate 106. Main Stand: Interior First Floor (DSC_0631). Facing South.



Plate 107. Main Stand: Interior First Floor (DSC_0633). Facing South.



Plate 108. Main Stand: Interior First Floor (DSC_0634). Facing North.



Plate 109. Main Stand: Interior First Floor (DSC_0635). Facing West.



Plate 110. Main Stand: Interior First Floor (DSC_0637). Facing South



Plate 111. Main Stand: Interior First Floor (DSC_0638). Facing North.



Plate 112. Main Stand: Interior First Floor (DSC_0640). Facing South.



Plate 113. Main Stand: Interior First Floor (DSC_0641). Facing North.



Plate 114. Main Stand: Interior Second Floor (DSC_0628). Facing South.



Plate 115. Main Stand: Interior Second Floor (DSC_0629). Facing North.



Plate 116. Main Stand: Interior Second Floor Stairs (DSC_0624). Facing North.



Plate 117. Main Stand: Interior Second Floor (DSC_0613). Facing South.



Plate 118. Main Stand: Interior Second Floor (DSC_0614). Facing South-west.



Plate 119. Main Stand: Interior Second Floor (DSC_0616). Facing North.



Plate 120. Main Stand: Interior Second Floor (DSC_0617). Facing North.



Plate 121. Main Stand: Interior Second Floor (DSC_0618). Facing South.



Plate 122. Gym: Interior (DSC_0670). Facing North-west.



Plate 123. Gym: Interior (DSC_0671). Facing North-east.



Plate 124. Gym: Interior (DSC_0673), Facing, South-west.

APPENDIX 1

Photographic Archive Listing

MAP 5-10.2021 - Bootham Crescent Football Ground, Grosvenor Road, York
(NGR SE 59913 52971)

Camera: Nikon 5300 (24 Megapixel)
Photographer: Kelly Hunter

File	Date	Description	Facing
DSC_0568	15/12/2021	1922 Bar: Interior Ground Floor	South-west
DSC_0569	15/12/2021	1922 Bar: Interior Ground Floor	South-west
DSC_0570	15/12/2021	1922 Bar: Interior Ground Floor	West
DSC_0571	15/12/2021	1922 Bar: Interior Ground Floor	South-east
DSC_0572	15/12/2021	1922 Bar: Interior Ground Floor	North-east
DSC_0573	15/12/2021	1922 Bar: Interior Ground Floor	North
DSC_0574	15/12/2021	1922 Bar: Interior Ground Floor	North-west
DSC_0575	15/12/2021	1922 Bar: Interior Ground Floor	East
DSC_0576	15/12/2021	1922 Bar: Interior Ground Floor	East
DSC_0577	15/12/2021	1922 Bar: Interior Ground Floor	East
DSC_0578	15/12/2021	1922 Bar: Interior Ground Floor	North
DSC_0579	15/12/2021	1922 Bar: Interior Ground Floor	North
DSC_0580	15/12/2021	1922 Bar: Interior Ground Floor	North
DSC_0581	15/12/2021	1922 Bar: Interior Ground Floor	South-west
DSC_0582	15/12/2021	1922 Bar: Interior Ground Floor	North-west
DSC_0583	15/12/2021	1922 Bar: Interior Ground Floor	North-east
DSC_0584	15/12/2021	1922 Bar: Interior Ground Floor	East
DSC_0585	15/12/2021	1922 Bar: Interior Ground Floor	South
DSC_0586	15/12/2021	1922 Bar: Interior Ground Floor	South-east
DSC_0587	15/12/2021	1922 Bar: Interior Ground Floor	North-east
DSC_0588	15/12/2021	1922 Bar: Interior Ground Floor	North
DSC_0589	15/12/2021	1922 Bar: Interior Ground Floor	North-west
DSC_0590	15/12/2021	1922 Bar: Interior First Floor	North-east
DSC_0591	15/12/2021	1922 Bar: Interior First Floor	South-west
DSC_0592	15/12/2021	1922 Bar: Interior First Floor	South-east
DSC_0593	15/12/2021	1922 Bar: Interior First Floor	North-west
DSC_0594	15/12/2021	1922 Bar: Interior First Floor	North-west
DSC_0595	15/12/2021	1922 Bar: Interior Ground Floor	South-east
DSC_0596	15/12/2021	Club Shop: Interior Ground Floor	North-west
DSC_0597	15/12/2021	Club Shop: Interior Ground Floor	North-west
DSC_0598	15/12/2021	Club Shop: Interior Ground Floor	South-east
DSC_0599	15/12/2021	Club Shop: Interior Ground Floor	South-east
DSC_0600	15/12/2021	Club Shop: Interior Ground Floor	South-east
DSC_0601	15/12/2021	Club Shop: Interior Ground Floor	South-east
DSC_0602	15/12/2021	Club Shop: Interior Ground Floor	South-west
DSC_0603	15/12/2021	Club Shop: Interior Ground Floor	North-east
DSC_0604	15/12/2021	Club Shop: Interior Ground Floor	North-west
DSC_0605	15/12/2021	Club Shop: Interior Ground Floor	North-west

File	Date	Description	Facing
DSC_0606	15/12/2021	Club Shop: Interior Ground Floor	South
DSC_0607	15/12/2021	Club Shop: Interior Ground Floor	South
DSC_0608	15/12/2021	Club Shop: Interior Ground Floor	South-west
DSC_0609	15/12/2021	Club Shop: Interior Ground Floor	South-west
DSC_0610	15/12/2021	Club Shop: Interior Ground Floor	South-west
DSC_0611	15/12/2021	Club Shop: Interior Ground Floor	South-west
DSC_0612	15/12/2021	Club Shop: Interior Ground Floor	South-west
DSC_0613	15/12/2021	Main Stand: Interior Second Floor	South
DSC_0614	15/12/2021	Main Stand: Interior Second Floor	North-west
DSC_0615	15/12/2021	Main Stand: Interior Second Floor	North
DSC_0616	15/12/2021	Main Stand: Interior Second Floor	North
DSC_0617	15/12/2021	Main Stand: Interior Second Floor	West
DSC_0618	15/12/2021	Main Stand: Interior Second Floor	North-west
DSC_0619	15/12/2021	Main Stand: Interior Second Floor	North-east
DSC_0620	15/12/2021	Main Stand: Interior Second Floor	South
DSC_0621	15/12/2021	Main Stand: Interior Second Floor	South-east
DSC_0622	15/12/2021	Main Stand: Interior Second Floor	East
DSC_0623	15/12/2021	Main Stand: Interior Second Floor	North-east
DSC_0624	15/12/2021	Main Stand: Interior Second Floor	North-east
DSC_0625	15/12/2021	Main Stand: Interior First Floor	North
DSC_0626	15/12/2021	Main Stand: Interior First Floor	South
DSC_0627	15/12/2021	Main Stand: Interior First Floor	North-east
DSC_0628	15/12/2021	Main Stand: Interior Second Floor	South-east
DSC_0629	15/12/2021	Main Stand: Interior Second Floor	North-east
DSC_0630	15/12/2021	Main Stand: Interior Second Floor	North-west
DSC_0631	15/12/2021	Main Stand: Interior First Floor	South-west
DSC_0632	15/12/2021	Main Stand: Interior First Floor	South-west
DSC_0633	15/12/2021	Main Stand: Interior First Floor	South-west
DSC_0634	15/12/2021	Main Stand: Interior First Floor	North-east
DSC_0635	15/12/2021	Main Stand: Interior First Floor	North-west
DSC_0636	15/12/2021	Main Stand: Interior First Floor	South
DSC_0637	15/12/2021	Main Stand: Interior First Floor	South-west
DSC_0638	15/12/2021	Main Stand: Interior First Floor	North-east
DSC_0639	15/12/2021	Main Stand: Interior First Floor	South
DSC_0640	15/12/2021	Main Stand: Interior First Floor	South-west
DSC_0641	15/12/2021	Main Stand: Interior First Floor	North-east
DSC_0642	15/12/2021	Main Stand: Interior Stairs from Family Room to Car Park	South-west
DSC_0643	15/12/2021	Main Stand: Interior Stairs from Family Room to Car Park	North-west
DSC_0644	15/12/2021	Main Stand: Interior Ground Floor	South-east
DSC_0645	15/12/2021	Main Stand: Interior Ground Floor	South
DSC_0646	15/12/2021	Main Stand: Interior Ground Floor	North-east
DSC_0647	15/12/2021	Main Stand: Interior Ground Floor (Physiotherapists Room)	East
DSC_0648	15/12/2021	Main Stand: Interior Ground Floor (Physiotherapists Room)	West
DSC_0649	15/12/2021	Main Stand: Interior Ground Floor (Entrance)	South-east
DSC_0650	15/12/2021	Main Stand: Interior Ground Floor (Corridor)	South-west
DSC_0651	15/12/2021	Main Stand: Interior Ground Floor (Office)	East
DSC_0652	15/12/2021	Main Stand: Interior Ground Floor (Office)	South
DSC_0653	15/12/2021	Main Stand: Interior Ground Floor (Office)	North-west
DSC_0654	15/12/2021	Main Stand: Interior Ground Floor (Corridor)	North-east

File	Date	Description	Facing
DSC_0655	15/12/2021	Main Stand: Interior Ground Floor (Office)	South
DSC_0656	15/12/2021	Main Stand: Interior Ground Floor (Office)	North
DSC_0657	15/12/2021	Main Stand: Interior Ground Floor (Office)	North-west
DSC_0658	15/12/2021	Main Stand: Interior Ground Floor (Corridor)	South-east
DSC_0659	15/12/2021	Main Stand: Interior Ground Floor (Corridor)	North-west
DSC_0660	15/12/2021	Main Stand: Interior Ground Floor (Rear Corridor)	South-west
DSC_0661	15/12/2021	Main Stand: Interior Ground Floor (Home Team Baths)	South
DSC_0662	15/12/2021	Main Stand: Interior Ground Floor (Home Team Baths)	South-east
DSC_0663	15/12/2021	Main Stand: Interior Ground Floor (Home Team Changing Room)	South
DSC_0664	15/12/2021	Main Stand: Interior Ground Floor (Home Team Changing Room)	North
DSC_0665	15/12/2021	Main Stand: Interior Ground Floor (Home Team Changing Room)	South-west
DSC_0666	15/12/2021	Main Stand: Interior Ground Floor (Rear Corridor Blocked Window)	North-west
DSC_0667	15/12/2021	Main Stand: Interior Ground Floor (Away Team Changing Room)	South-east
DSC_0668	15/12/2021	Main Stand: Interior Ground Floor (Away Team Changing Room)	North-west
DSC_0669	15/12/2021	Main Stand: Interior Ground Floor (Away Team Bath)	South-east
DSC_0670	15/12/2021	Gym: Interior	West
DSC_0671	15/12/2021	Gym: Interior	East
DSC_0672	15/12/2021	Gym: Interior	North
DSC_0673	15/12/2021	Gym: Interior	South
DSC_0674	15/12/2021	Gym: Interior (Corridor)	West
DSC_0675	15/12/2021	Gym: Interior (Corridor)	South-west
DSC_0676	15/12/2021	Gym: Interior (Corridor)	East
DSC_0677	15/12/2021	Gym: Exterior Access	East
DSC_0678	15/12/2021	Turnstyles (Grosvenor Road West)	South-east
DSC_0679	15/12/2021	Turnstyles (Grosvenor Road West)	South-east
DSC_0680	15/12/2021	Turnstyles (Grosvenor Road West)	West
DSC_0681	15/12/2021	Turnstyles (Grosvenor Road West)	West
DSC_0682	15/12/2021	Turnstyles (Grosvenor Road West)	East
DSC_0683	15/12/2021	Tunnel beneath Popular Stand	South-west
DSC_0684	15/12/2021	Tunnel beneath Popular Stand	North-east
DSC_0685	15/12/2021	Tunnel beneath Popular Stand	East
DSC_0686	15/12/2021	Tunnel beneath Popular Stand	North-east
DSC_0687	15/12/2021	Tunnel beneath Popular Stand	East
DSC_0688	15/12/2021	Main Stand: Exterior Commentary Box	North-east
DSC_0689	15/12/2021	Main Stand: Interior Commentary Box	North-east
DSC_0690	15/12/2021	Main Stand: Interior Commentary Box	West
DSC_0691	15/12/2021	Main Stand: Interior Commentary Box	South-west
DSC_0692	15/12/2021	Main Stand: Exterior Commentary Box	East
DSC_0693	16/12/2021	Car Park Entrance on Grosvenor Road	North
DSC_0694	16/12/2021	Car Park Entrance & Club Shop: Exterior South Elevation	North
DSC_0695	16/12/2021	1922 Bar: Exterior South Elevation	North-west
DSC_0696	16/12/2021	1922 Bar: Exterior South Elevation	North
DSC_0697	16/12/2021	1922 Bar: Exterior South Elevation	North

File	Date	Description	Facing
DSC_0698	16/12/2021	1922 Bar: Exterior South Elevation	North
DSC_0699	16/12/2021	Access onto Grosvenor Road (south of Main Stand)	North
DSC_0700	16/12/2021	Access onto Grosvenor Road (south of Main Stand)	West
DSC_0701	16/12/2021	Turnstyles on Grosvenor Road	North-west
DSC_0702	16/12/2021	Turnstyles on Grosvenor Road (east of Gym)	North
DSC_0703	16/12/2021	Access onto Grosvenor Road (east of Gym)	North
DSC_0704	16/12/2021	Turnstyles on Grosvenor Road	North-west
DSC_0705	16/12/2021	Access & Turnstyles on Grosvenor Road (west of Gym)	North
DSC_0706	16/12/2021	Football Ground from Grosvenor Road	East
DSC_0707	16/12/2021	Club Shop: Exterior East Elevation	North-west
DSC_0708	16/12/2021	Main Stand, Club Shop and Car Park	North
DSC_0709	16/12/2021	Club Shop (East Elevation) & Main Stand South-west and South-east Elevations	North-west
DSC_0710	16/12/2021	Club Shop: Exterior East & North Elevations	South-west
DSC_0711	16/12/2021	Club Shop: Exterior East & North Elevations	South
DSC_0712	16/12/2021	Main Stand: Exterior South-east Elevation	West
DSC_0713	16/12/2021	Main Stand: Exterior South-east Elevation	West
DSC_0714	16/12/2021	Main Stand: Exterior South-east Elevation	North-west
DSC_0715	16/12/2021	Main Stand: Exterior South-east Elevation	North
DSC_0716	16/12/2021	Main Stand: Exterior South-east Elevation	West
DSC_0717	16/12/2021	Main Stand: Exterior South-east Elevation	South-west
DSC_0718	16/12/2021	Main Stand: Exterior South-east Elevation	South-west
DSC_0719	16/12/2021	Main Stand: Exterior South-east Elevation	North-west
DSC_0720	16/12/2021	Main Stand: Exterior South-east Elevation	West
DSC_0721	16/12/2021	Access onto Pitch (Shipton Road End)	West
DSC_0722	16/12/2021	Access onto Pitch (Shipton Road End) & Turnstyles	West
DSC_0723	16/12/2021	Turnstyles at Shipton Road End	North
DSC_0724	16/12/2021	Main Stand and Car Park towards Main Entrance	South
DSC_0725	16/12/2021	1922 Bar: Exterior West Elevation.	South-east
DSC_0726	16/12/2021	1922 Bar: Exterior West Elevation.	East
DSC_0727	16/12/2021	Main Stand: Exterior West & South Elevation	North-east
DSC_0728	16/12/2021	1922 Bar: Exterior West Elevation.	North-east
DSC_0729	16/12/2021	Grosvenor Road End: Exterior	South-west
DSC_0730	16/12/2021	Grosvenor Road End: Exterior	West
DSC_0731	16/12/2021	Gate C: Grosvenor Road East: Exterior	South
DSC_0732	16/12/2021	Grosvenor Road End & Pitch: Exterior	South-west
DSC_0733	16/12/2021	Grosvenor Road End & Pitch: Exterior	West
DSC_0734	16/12/2021	Grosvenor Road End: Exterior	West
DSC_0735	16/12/2021	Grosvenor Road End: Exterior	South
DSC_0736	16/12/2021	Grosvenor Road End: Exterior	East
DSC_0737	16/12/2021	Grosvenor Road End: Exterior Gate & Turnstyles	South
DSC_0738	16/12/2021	Grosvenor Road End: Exterior Gate & Turnstyles	South-east
DSC_0739	16/12/2021	Gym: Exterior East Elevation	West
DSC_0740	16/12/2021	Gym: Exterior East Elevation	West
DSC_0741	16/12/2021	Gym: Exterior East and South Elevations	West
DSC_0742	16/12/2021	Pitch, Main Stand & David Longhurst Stand: Exterior	North-east
DSC_0743	16/12/2021	Pitch & Main Stand: Exterior	North-east
DSC_0744	16/12/2021	Main Stand: Exterior South & West Elevations	North-east
DSC_0745	16/12/2021	Main Stand: Exterior West Elevation	East

File	Date	Description	Facing
DSC_0746	16/12/2021	Main Stand: Exterior West Elevation	East
DSC_0747	16/12/2021	Main Stand: Exterior West Elevation	East
DSC_0748	16/12/2021	Main Stand: Exterior North & West Elevations	South-east
DSC_0749	16/12/2021	Main Stand: Exterior West Elevation Entrance	East
DSC_0750	16/12/2021	Main Stand: Exterior West Elevation Entrance	East
DSC_0751	16/12/2021	Main Stand: Exterior West Elevation Entrance	East
DSC_0752	16/12/2021	Main Stand: Exterior West Elevation Entrance	East
DSC_0753	16/12/2021	First Aid Centre: Exterior West Elevation	East
DSC_0754	16/12/2021	First Aid Centre: Exterior West Elevation & Turnstyles	East
DSC_0755	16/12/2021	First Aid Centre: Exterior West Elevation & Turnstyles	North-east
DSC_0756	16/12/2021	Turnstyles north of carpark and entrance to Newborough Road	East
DSC_0757	16/12/2021	Turnstyles north of carpark and entrance to Newborough Road	East
DSC_0758	16/12/2021	Entrance to Newborough Road	East
DSC_0759	16/12/2021	Turnstyles north of Carpark	West
DSC_0760	16/12/2021	Main Stand: Exterior North Elevation	South
DSC_0761	16/12/2021	David Longhurst Stand: Exterior	West
DSC_0762	16/12/2021	David Longhurst Stand: Exterior	North
DSC_0763	16/12/2021	David Longhurst Stand: Exterior	North
DSC_0764	16/12/2021	David Longhurst Stand: Exterior	North
DSC_0765	16/12/2021	David Longhurst Stand: Exterior	North
DSC_0766	16/12/2021	David Longhurst Stand: Entrance to Shipton Road	North
DSC_0767	16/12/2021	Rear of David Longhurst Stand	West
DSC_0768	16/12/2021	Rear of David Longhurst Stand	East
DSC_0769	16/12/2021	Rear of David Longhurst Stand	West
DSC_0770	16/12/2021	Rear of David Longhurst Stand	West
DSC_0771	16/12/2021	Rear of David Longhurst Stand	North
DSC_0772	16/12/2021	Popular Stand: Exterior	South
DSC_0773	16/12/2021	Store north of Popular Stand: Interior	North
DSC_0774	16/12/2021	Store north of Popular Stand: Exterior	North
DSC_0775	16/12/2021	Store north of Popular Stand: Exterior	North-west
DSC_0776	16/12/2021	Popular Stand: Exterior	South-west
DSC_0777	16/12/2021	Popular Stand: Exterior	West
DSC_0778	16/12/2021	Popular Stand: Entrance to Tunnel	West
DSC_0779	16/12/2021	Popular Stand: Entrance to Tunnel	North-west
DSC_0780	16/12/2021	Popular Stand: Entrance to Tunnel	West
DSC_0781	16/12/2021	Popular Stand: Exterior	South-west
DSC_0782	16/12/2021	Popular Stand: Exterior	North
DSC_0783	16/12/2021	Grosvenor Road End south of Popular Stand	West
DSC_0784	16/12/2021	Grosvenor Road End south of Popular Stand	West
DSC_0785	16/12/2021	Popular Stand: Exterior	North
DSC_0786	16/12/2021	Gym: Exterior North Elevation	South
DSC_0787	16/12/2021	Gym: Exterior North Elevation	South
DSC_0788	16/12/2021	Gym: Exterior West Elevation	South
DSC_0789	16/12/2021	Gym: Exterior North Elevation	East
DSC_0790	16/12/2021	Gents Block west of Gym	North
DSC_0791	16/12/2021	Access to Popular Stand tunnel	North
DSC_0792	16/12/2021	Access from Popular Stand tunnel	South

File	Date	Description	Facing
DSC_0793	16/12/2021	Gym: Exterior West Elevation	East
DSC_0794	16/12/2021	Gate onto Grosvenor Road West of Gym	South
DSC_0795	16/12/2021	Alley to Pedestrian Entrance to turnstiles on Grosevenor Road	West
DSC_0796	16/12/2021	Alley to Pedestrian Entrance on Newborough Street.	West



DSC_0568



DSC_0569



DSC_0570



DSC_0571



DSC_0572



DSC_0573



DSC_0574



DSC_0575



DSC_0576



DSC_0577



DSC_0578



DSC_0579



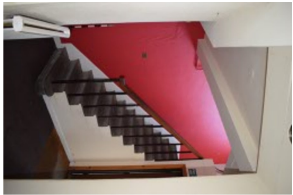
DSC_0580



DSC_0581



DSC_0582



DSC_0583



DSC_0584



DSC_0585



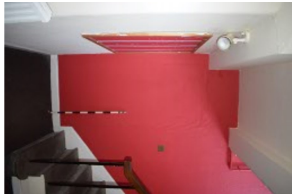
DSC_0586



DSC_0587



DSC_0588



DSC_0589



DSC_0590



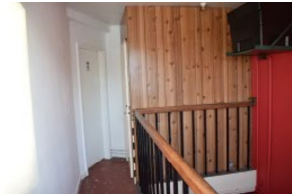
DSC_0591



DSC_0592



DSC_0593



DSC_0594



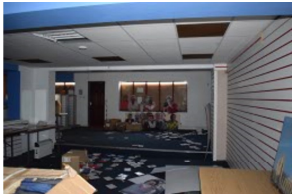
DSC_0595



DSC_0596



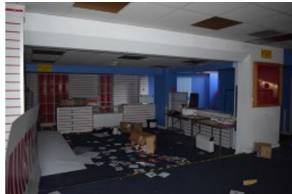
DSC_0597



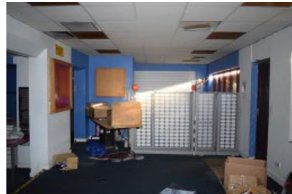
DSC_0598



DSC_0599



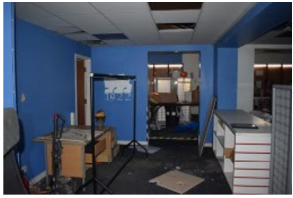
DSC_0600



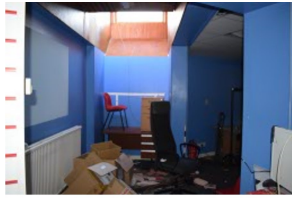
DSC_0601



DSC_0602



DSC_0603



DSC_0604



DSC_0605



DSC_0606



DSC_0607



DSC_0608



DSC_0609



DSC_0610



DSC_0611



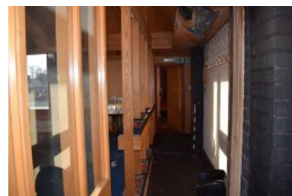
DSC_0612



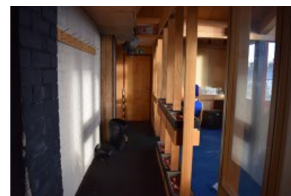
DSC_0613



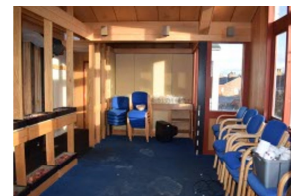
DSC_0614



DSC_0615



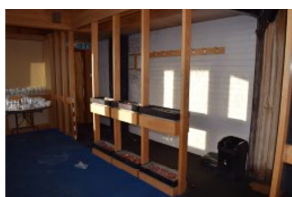
DSC_0616



DSC_0617



DSC_0618



DSC_0619



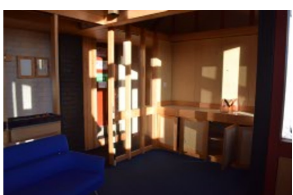
DSC_0620



DSC_0621



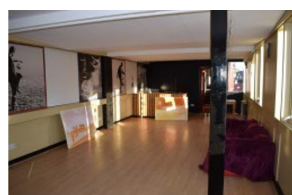
DSC_0622



DSC_0623



DSC_0624



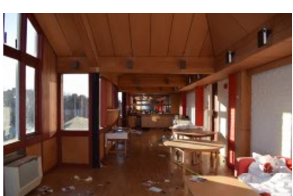
DSC_0625



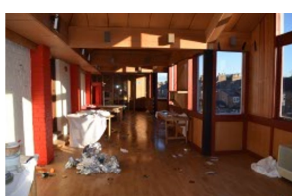
DSC_0626



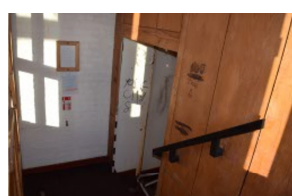
DSC_0627



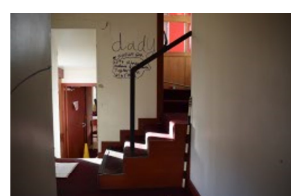
DSC_0628



DSC_0629



DSC_0630



DSC_0631



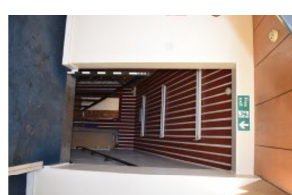
DSC_0632



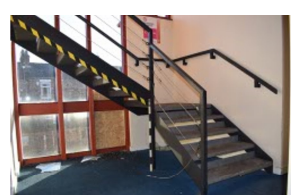
DSC_0633



DSC_0634



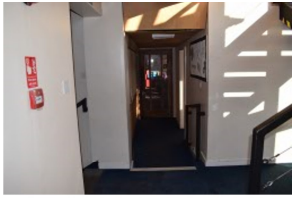
DSC_0635



DSC_0636



DSC_0637



DSC_0638



DSC_0639



DSC_0640



DSC_0641



DSC_0642



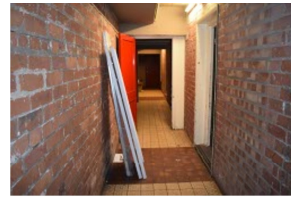
DSC_0643



DSC_0644



DSC_0645



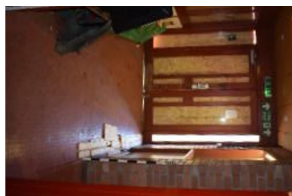
DSC_0646



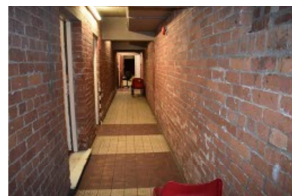
DSC_0647



DSC_0648



DSC_0649



DSC_0650



DSC_0651



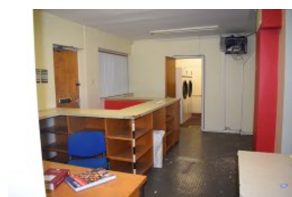
DSC_0652



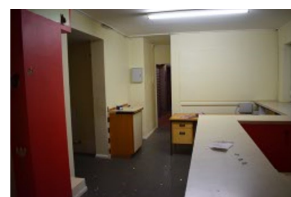
DSC_0653



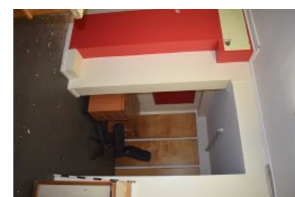
DSC_0654



DSC_0655



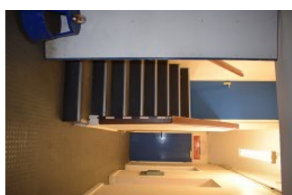
DSC_0656



DSC_0657



DSC_0658



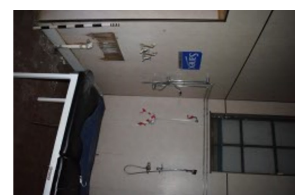
DSC_0659



DSC_0660



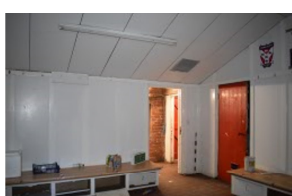
DSC_0661



DSC_0662



DSC_0663



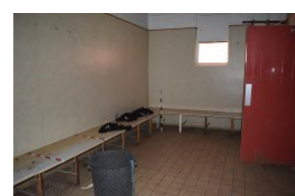
DSC_0664



DSC_0665



DSC_0666



DSC_0667



DSC_0668



DSC_0669



DSC_0670



DSC_0671



DSC_0672



DSC_0673



DSC_0674



DSC_0675



DSC_0676



DSC_0677



DSC_0678



DSC_0679



DSC_0680



DSC_0681



DSC_0682



DSC_0683



DSC_0684



DSC_0685



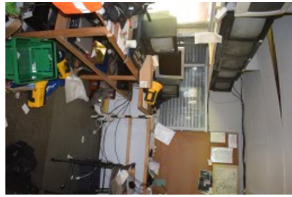
DSC_0686



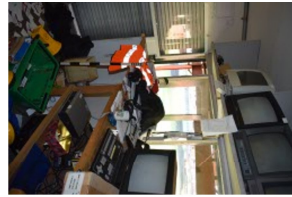
DSC_0687



DSC_0688



DSC_0689



DSC_0690



DSC_0691



DSC_0692



DSC_0693



DSC_0694



DSC_0695



DSC_0696



DSC_0697



DSC_0698



DSC_0699



DSC_0700



DSC_0701



DSC_0702



DSC_0703



DSC_0704



DSC_0705



DSC_0706



DSC_0707



DSC_0708



DSC_0709



DSC_0710



DSC_0711



DSC_0712



DSC_0713



DSC_0714



DSC_0715



DSC_0716



DSC_0717



DSC_0718



DSC_0719



DSC_0720



DSC_0721



DSC_0722



DSC_0723



DSC_0724



DSC_0725



DSC_0726



DSC_0727



DSC_0728



DSC_0729



DSC_0730



DSC_0731



DSC_0732



DSC_0733



DSC_0734



DSC_0735



DSC_0736



DSC_0737



DSC_0738



DSC_0739



DSC_0740



DSC_0741



DSC_0742



DSC_0743



DSC_0744



DSC_0745



DSC_0746



DSC_0747



DSC_0748



DSC_0749



DSC_0750



DSC_0751



DSC_0752



DSC_0753



DSC_0754



DSC_0755



DSC_0756



DSC_0757



DSC_0758



DSC_0759



DSC_0760



DSC_0761



DSC_0762



DSC_0763



DSC_0764



DSC_0765



DSC_0766



DSC_0767



DSC_0768



DSC_0769



DSC_0770



DSC_0771



DSC_0772



DSC_0773



DSC_0774



DSC_0775



DSC_0776



DSC_0777



DSC_0778



DSC_0779



DSC_0780



DSC_0781



DSC_0782



DSC_0783



DSC_0784



DSC_0785



DSC_0786



DSC_0787



DSC_0788



DSC_0789



DSC_0790



DSC_0791



DSC_0792



DSC_0793



DSC_0794



DSC_0795



DSC_0796



maparch

MAP Archaeological Practice

Bootham Crescent Football Ground
Grosvenor Road
York
SE 5990 5290
MAP 5.10. 2018

Written Scheme of Investigation
HISTORIC BUILDING RECORDING
(Photographic and Descriptive Record)
19/00246/FULM

MAP Archaeological Practice Ltd ©

Bootham Crescent Football Ground
Grosvenor Road
York

MAP 5.10.2018

19/00246/FULM

SE 5990 5290

WRITTEN SCHEME OF WORKS: HISTORIC BUILDING RECORDING
(PHOTOGRAPHIC & DESCRIPTIVE RECORD)

CONTENTS	PAGE
Figure List	2
1. Introduction	3
2. Compliance	4
3. Site Description	5
4. Historical and Archaeological Background	5
5. Aims and Objectives	6
6. Methodology	7
7. Report Preparation	8
8. Archive	9
9. Copyright, Confidentiality and Publicity	10
10. Monitoring, Health and Safety and Insurance	10
11. Timetable and Staffing	11
12. References	11

Figure List

Page

- | | | |
|----|----------------|---|
| 1. | Site Location. | 4 |
| 2. | Survey Area. | 6 |

Bootham Crescent Football Ground
Grosvenor Road
York

MAP 5.10.2018

19/00246/FULM

SE 5990 5290

WRITTEN SCHEME OF WORKS: HISTORIC BUILDING RECORDING
(PHOTOGRAPHIC & DESCRIPTIVE RECORD)

1 Introduction

- 1.1 This document sets out the details for the Historic Building Recording required at Bootham Crescent Football Ground, Grosvenor Road, York (Planning Application Ref. 19/00246/FULM). The Written Scheme of Works has been commissioned by Persimmon Homes and the proposed work will provide a record of the structures in advance of their demolition as a permanent archive record of the buildings, football stands, terraces and pitch.
- 1.2 In accordance with the recommendations of the National Planning Policy Framework (February 2019) on 'Archaeology and Planning' states that the *'Local planning authorities ... require developers to record and advance understanding of the significance of any heritage assets to be lost (wholly or in part) in a manner proportionate to their importance and the impact, and to make this evidence (and any archive generated) publicly accessible'* (NPPF 2019, para 199, 56). The WSI has been produced to comply with the City of York Council Site Specific Requirements for a *'Level 2 Building Record of all existing structures (external and internal where appropriate)'* and with *'Particular attention should be paid to the original stands which date to the 1930s and any evidence of the use of the tunnel at the back of the Popular Stand as an air raid shelter. The ground as a whole should be captured by photographic record and all original features should be recorded'*.
-

- 1.3 All maps within this report have been produced from the Ordnance Survey with the permission of the Controller of Her Majesty's Stationery Office, Crown Copyright. License No. AL 50453A.

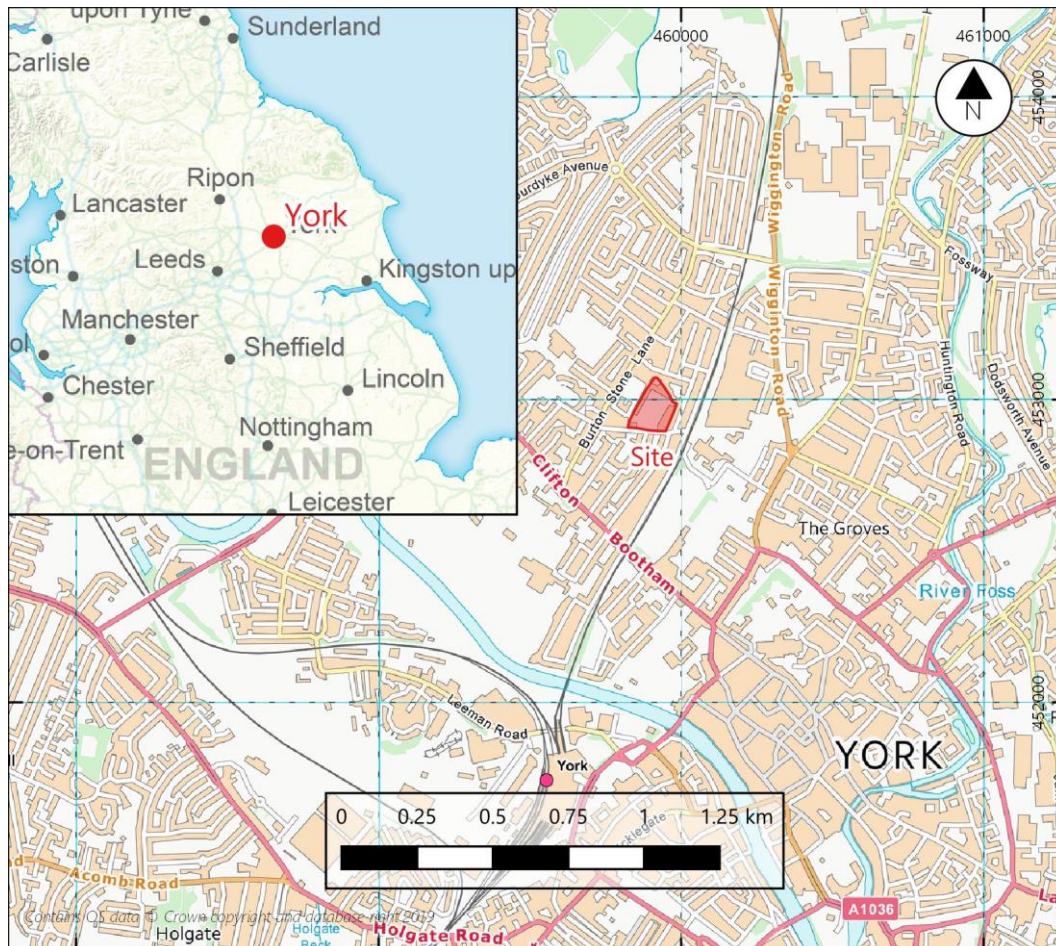


Figure 1. Site Location.

2 Compliance

- 2.1 The Historic Building Recording shall be undertaken in a manner consistent with the Chartered Institute for Archaeologists Standard and Guidance '*Standards and guidance for the archaeological investigation and recording of standing buildings or structures*' revised December 2014 and the Historic England's Guidelines '*Understanding Historic Buildings, A Guide to Good Recording Practice*', 2016.

-
- 2.2 All relevant Historic England and ClfA guidance on archaeological practice must be followed.

3. Site Description

- 3.1 The proposed development area is currently a football stadium with associated stands and administrative buildings (Grid Ref. SE 5990 5290), located in the Clifton area of York, c. 1km north of York City Centre.
- 3.2 The stadium buildings surround the grass pitch and are constructed of brick, concrete and glass with a car park to the east of the main stand. Current vehicular access to the site is via Grosvenor Road, on the south-eastern corner of the site.
- 3.3 The site is 1.705 hectares in size with the grass pitch area is c. 0.6 hectares, standing at an elevation of approximately 12.5m AOD.

4. Archaeological and Historical Background

- 4.1 York Football Ground is a Monument on the City of York HER (City of York HER Ref. MYO3883), a 2002 Desk Based Assessment is an Event (City of York HER Ref. EYO609) and the City of York Historic Landscape Characterisation describes the Proposed Development Area as *'Kit Kat Stadium, 1930's Football Ground formerly a Cricket Ground'* (City of York HER Ref. HYO22569).
- 4.2 The ground opened as a football venue in 1932 having been previously used as the county cricket club. York City football club had been founded in 1922 and the club originally played at Fulfordgate. In 1932 the ground had a main stand (east side) and banked terraces. The 1937 Ordnance Survey map depicted two stands east and west of the pitch, the Main Stand and the Popular Stand.
- 4.3 In *Gas Masks for Goal Posts* (Rippon 2011), the author stated during the second world war *'a tunnel at the back of the Popular Stand was utilised as an air-raid shelter for the staff and pupils of the nearby Shipton Street School'*

and that the ground suffered '*slight damage*' when a bomb landed on houses in Shipton Street in April 1942.

- 4.4 The ground was improved in the 1950s when the main (east) stand was extended in 1955. The 1961 Ordnance Survey map depicted terraces added north and south of the pitch and a larger east stand.
- 4.5 In 1991, the Shipton Street End was covered and renamed the Longhurst Stand, north of the pitch, in honour of David Longhurst, a York City player who collapsed and died on the pitch the previous year.

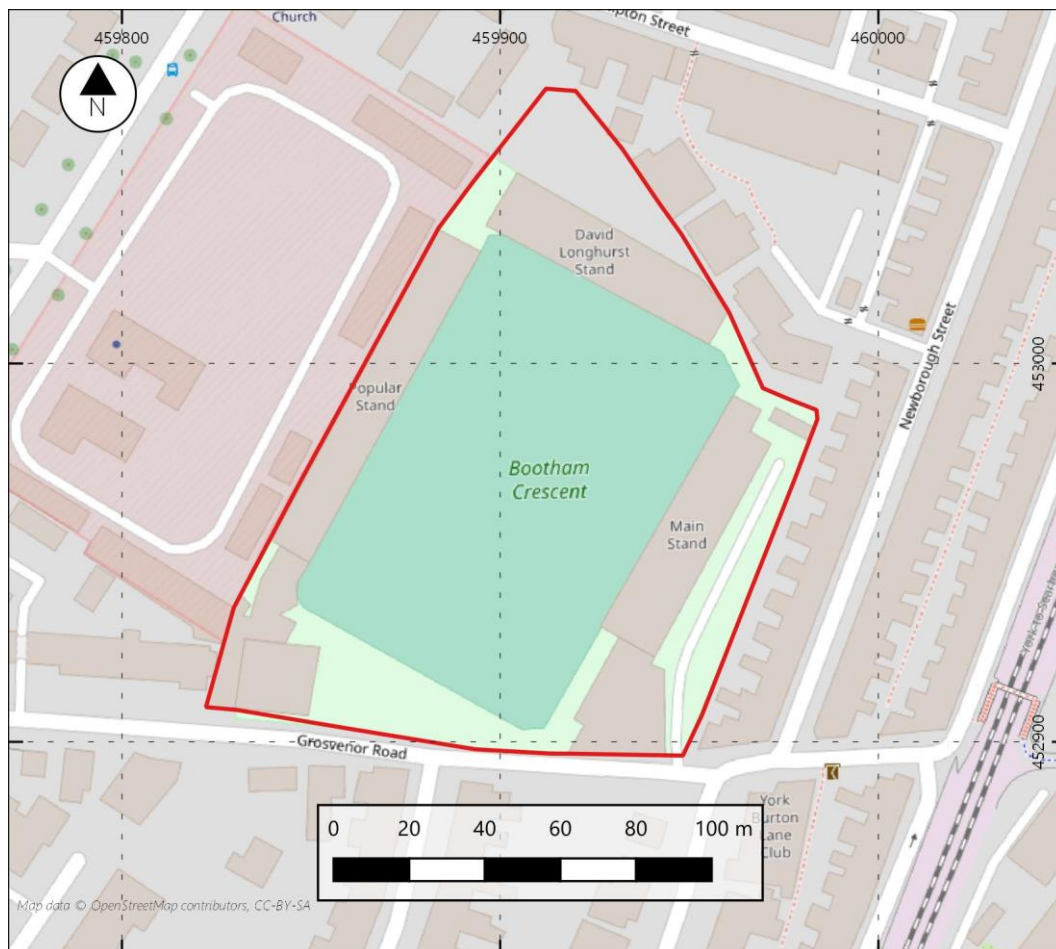


Figure 2. Survey Area.

5. Aims and Objectives

- 5.1 The Aim of the Historic Building Recording of the Bootham Crescent Football Ground is to :-

-
- Provide a systematic historic building recording of the buildings, stands and other structures at the football ground prior to demolition

5.2 With the objective to:-

- to determine the original nature, date and survival of any earlier structure and fabric and their development to present day

6. Methodology

6.1 The Proposed Development will demolish the structures at the football ground. The interior of the stands, tunnels and other buildings will need to be accessed.

6.2 The Historic Building Recording will be an archival record prior to demolition and determine their original nature, date and survival of any earlier structure and fabric and their development to present, to inform an assessment of significance.

6.3 Assessment of all internal and external features of historical or architectural interest shall be undertaken to a professional standard by fully trained and competent archaeologist. Each feature shall be place in its context within the present structure. High resolution digital photographs (24 megapixel or greater) shall be taken for the photographic record.

6.4 The photographic record will comprise:

- The building in the context of the immediate surrounding (i.e. the relationship to other buildings and structures)
- External elevations
- A general internal photographic record should be made of the building, including internal walls/subdivisions
- The roof structure of each section of the building
- Details, e.g. windows, openings, doors, decorative brickwork, carpentry joints, reused timbers and any other interesting features, fixtures or fittings. Where particular features, such as windows or openings of a single type occur more than once within the structure, only representative photographs need be taken.

-
- General views should be taken of each room/space to be altered, and on each floor or discrete internal space, from a sufficient number of vantage points to adequately record the form, general appearance and method of construction of each area photographed; this may require ancillary lighting or flash equipment.
 - Wherever possible photographs should be taken at right angles to the elevations or detail. A metric scale of an appropriate length will be used (preferably a 0.5m, 1m or 2m ranging pole as appropriate).
 - Electronic flash and/or battery powered strip lights may be used for fill in lighting for the internal shots.
- 6.5 In addition to ground photography, the site may benefit from recording by low level aerial photography (drone photographic survey of the stands). If a drone is used to obtain aerial images of the site, this activity must be in full compliance with aviation law, the operator will be fully trained and licenced by the Civil Aviation Authority and that a pre-flight and onsite risk assessments have been carried out. Digital images obtained from a drone mounted camera must comply with the requirements for digital photography given above (para 6.3).
- 6.6 Floor plans shall be produced at a scale of 1:100. Section or elevation drawings, if required, will be drawn at a scale of 1:20.
- 6.7 If items of architectural or historical importance require salvage to achieve preservation by record, or timber, plaster or mortar samples are required, a finds recovery and conservation strategy shall be prepared in advance of construction work starting.
- 7. Report Preparation, Contents and Distribution**
- 7.1 Upon completion of the building recording, information will be assessed as to their potential and significance for further analysis.
- 7.2 A report will be prepared to include the following:
- a) A non-technical summary of the results of the work, Introduction and aims and objectives.
 - b) An introduction which should include
 - the site code/project number
-

- planning reference number
 - dates when fieldwork took place
 - grid reference
- c) An account of the methods and results of the Building Recording, describing materials, structure, development and phasing and include :
- Basic dimensions and layout of the buildings and individual rooms/internal spaces
 - Building fabric and roof covering,
 - Structural detail and construction e.g. windows, openings, doors, decorative brickwork, carpentry joints, joists/roof structures, re-used timbers and any other interesting features, fixtures or fittings
 - Any observations on date, phasing, development and function of the building/s, including any fixtures and fittings,
- d) The written description should be cross-referenced to the photographic survey and individual images, and to an accurate scale plan of the buildings.
- e) Appendices, as appropriate, including Detailed archive description and photographic record and location and destination, and a copy of the Written Scheme of Investigation
- f) References and bibliography of all sources used
- 7.3 Copies of the report will be submitted to the commissioning body, the Local Planning Authority and the NLHER within an agreed timetable and subject to any contractual requirements on confidentiality
- 7.4 We will provide a digital copy of the report in PDF format to the City of York HER.
- 7.5 A Brief, interim report may be required shortly after the completion of fieldwork.
- 8. Archive**
- 8.1 The historic building archive of the photographs will be deposited with the Archaeological Data Service.
- 8.2 The photographic archive should be accompanied by a short written summary providing brief details of the photographic survey, the equipment
-

and methodology used, the name of the photographer and the date and duration of the photographic survey.

- 8.3 Metadata for each photo will include the name and address of the building, date recorded, photographer's name, and national grid reference (see NGR above).
- 8.4 A photographic register and photo location plan are required. The photographic register should (as a minimum) include location, direction and subject of shot must accompany the photographic record; a separate photographic register should be supplied for any colour slides and digital photographs. Position and direction of each photograph and slide should be noted on a scaled copy of the building plan, which should also be marked with a north pointer and a scale.
- 8.5 The historic building report will be lodged with the City of York HER on completion of the report.

9. Copyright, Confidentiality and Publicity

- 9.1 Unless the individual/organisation commissioning the project wishes to state otherwise, the copyright of any written, graphic or photographic records and reports rests with MAP.

10 Monitoring, Health and Safety & Insurance

- 10.1 The work will be monitored under the auspices of the NLHER who have been consulted about the commencement of site works.
- 10.2 Health and safety will take priority over archaeological matters. All archaeologists undertaking fieldwork must comply with all Health and Safety Legislation, this includes the preparation of a Risk Assessment.
- 10.3 Necessary precautions should be taken over underground services and overhead lines.

10.4 MAP will provide evidence of all necessary insurances, including Employer's Liability, Professional Liability and Public Liability Cover.

10.5 All visitors to site will comply with necessary precautions regarding COVID-19 as outlined in the RAMS for the site and sign a declaration to declare they are not infectious, adhere to social distancing and approved safety measures.

11. Timetable and Staffing

11.1 On site work to commence in June 2020. Photographic archive preparation and the report will commence on completion of on-site works.

12. References

Chartered Institute for Archaeologists 2014 *Standard and Guidance for the Archaeological Recording of Buildings and Structures*.

Chartered Institute for Archaeologists 2014 *Standard and Guidance for the Creation, Compilation, Transfer and Deposition of Archaeological Archives*.

Chartered Institute for Archaeologists 2019 *Code of Conduct*.

Historic England 2016 *Understanding Historic Buildings, A Guide to Good Recording Practice*.

Lee, E. (2006) *Management of Research Project in the Historic Environment: The MoRPHE Project Managers' Guide*. Swindon: English Heritage.

Rippon, A. 2011 *Gas Masks for Goal Posts*. The History Press

Walker, K., 1990. *Guidelines for the preparation of excavation archives for long-term storage*, Archaeology Section of the United Kingdom Institute for Conservation.