



Archaeological Investigations at 1 Little Shambles, York

By Alvaro Mora-Ottomano

Structural Watching Brief Report YA/2022/127 July 2022





York Archaeology undertakes a wide range of urban and rural archaeological consultancies, surveys, evaluations, assessments and excavations for commercial, academic and charitable clients. We manage projects, provide professional advice and fieldwork to ensure a high quality, cost effective archaeological and heritage service. Our staff have a considerable depth and variety of professional experience and an international reputation for research, development and maximising the public, educational and commercial benefits of archaeology. Based in York, Sheffield, Nottingham and Glasgow the Trust's services are available throughout Britain and beyond.

York Archaeology, Cuthbert Morrell House, 47 Aldwark, York YO1 7BX

Phone: +44 (0)1904 663000 Fax: +44 (0)1904 663024

Email: archaeology@yorkat.co.uk Website: <https://www.yorkarchaeology.co.uk>

© 2022 York Archaeological Trust for Excavation and Research Limited (trading as York Archaeology)

Registered Office: 47 Aldwark, York YO1 7BX

A Company Limited by Guarantee. Registered in England No. 1430801

A registered Charity in England & Wales (No. 509060) and Scotland (No. SCO42846)

CONTENTS

NON-TECHNICAL SUMMARY	IV
KEY PROJECT INFORMATION	V
1 INTRODUCTION	1
2 SITE LOCATION AND DESCRIPTION	1
3 AIMS AND METHODOLOGY	1
4 HISTORICAL BACKGROUND	1
5 RESULTS	3
5.1 Introduction	3
5.2 Structural watching brief: 20 th April 2022	3
5.3 Structural watching brief: 10 th May 2022	5
6 CONCLUSIONS	7
7 DISSEMINATION AND ARCHIVING	8
8 ACKNOWLEDGEMENTS	8
9 BIBLIOGRAPHY	8
PLATES	10
FIGURES	11
APPENDIX 1 – YAT ARCHAEOLOGICAL WATCHING BRIEF INTERIM REPORT	12
APPENDIX 2 – WRITTEN SCHEME OF INVESTIGATION	13
APPENDIX 3 – OASIS FORM	14

Plates

Cover: View of 1 Little Shambles, York

Plate 1: Front façade of the site at 1 Little Shambles, York

Plate 2: Rear elevation photographed in 2019 prior to the repair work (courtesy of Mason Clark Associates)

Plate 3: Shopfront with reused post comprising an obsolete mortice with pegs and an empty hole (arrow)

Plate 4: Detail of carpenter assembly's mark above the obsolete mortice joints with pegs and an empty hole

Plate 5: General view of the second-floor level during the recent repair work

Plate 6: Southeast gable truss with removed splices within the tie-beam 5

Plate 7: Removed splice revealing a teasele tenon of jowl post 1 with empty peg hole (arrow)

Plate 8: Joint between tie-beam 5 and the left gable brace 9 with later ornamental short peg

Plate 9: Detail of peg hole which does not pierce the tie-beam or extends through to a mortice

Plate 10: Joint between the tie-beam 5 and principal post 2 to the northeast end of the rear elevation

Plate 11: Detail of partially decayed upper section of the wall plate and dovetail mortice above it

Plate 12: Northeastern side of the second floor during the partial removal of infill panels

Plate 13: General view of the southwestern side of the second floor during the repair work

Plate 14: Detail of partially removed infill panels between post 1 and second-floor brace 11

Plate 15: Chamfered edge within the southwestern end of beam 7 (arrow) adjacent to post 1

Plate 16: Peg holes filled with lead within post 1 (arrows)

Plate 17: Beam 7 with vacant peg hole filled with lead (arrow)

Plate 18: Central area of beam 6 with an empty peg hole and mortice (arrow)

Plate 19: Later iron bolted rod securing beams 6 and 7 to the right of stud 17 (arrow)

Plate 20: Chamfered northeastern end of beam 7 and empty peg holes within post 2

Plate 21: Joint between post 2 and first-floor brace 25 with pegs

Plate 22: First-floor level of the southwest side elevation with reused girding beam

Plate 23: Southwest face of post 1 with empty peg holes of a vacant mortice

Plate 24: Gable with partially removed infill panels

Plate 25: Uppermost section of gable following the removal of infill panel

Plate 26: Crown post 15 with lead-filled mortices of former crown purlin and related empty peg hole (arrow)

Plate 27: Detail of empty peg hole of former crown purlin within the right lateral side

Plate 28: Crown post 15 with later ornamental short peg

Plate 29: Southwest face of the crown post 15 with stave groove and empty peg holes

Plate 30: Northeast face of the crown post 15 with stave groove and empty peg holes

Plate 31: Detail of empty peg holes of former crown brace

Plate 32: Tie-beam with partial empty mortice for rafter 3 and crudely incised housing for gable brace 9

Plate 33: Tie-beam with partially filled-in mortice for rafter 4

Plate 34: Jowl post 1 with iron bracket attached to the underside of tie-beam 5

Plate 35: Detail of iron bracket attached to post 1 and tie-beam 5

Plate 36: Post 2 with iron bracket attached to the underside of tie-beam 5

Plate 37: Detail of iron bracket attached to post 2 and tie-beam 5

Plate 38: Replaced beam 7 and second-floor joist 26

Plate 39: Floor joists 26 with plaster ceiling above them

Plate 40: Detail of plaster ceiling immediately over the joists 26

Plate 41: Additional view of ceiling joist inside the first floor with plaster ceiling over it

Plate 42: Ceiling joist with carpenter's mark VIII and plaster ceiling directly above it

Plate 43: Partial removed infill panel within the southwest elevation with iron bracket

Plate 44: Detail of empty mortice within the southwest face of post 1

Plate 45: Empty small mortice within brace on the southwest elevation to post 1

Plate 46: Detail of mortice within the underside of brace to the southwest face of post 1

Plate 47: Southwest side elevation with truncated post 1 below the girding beam

Plate 48: Detail of truncated post 1

Figures

Figure 1: Site location

Figure 2: Southeast elevation with number of timbers based on MBC 2019

Figure 3: Southeast elevation – detail of gable

Figure 4: Southeast elevation – detail of second floor

Figure 5: Southeast elevation – detail of first floor

Figure 6: Southeast end of the southwest side elevation

NON-TECHNICAL SUMMARY

Between 20th April and 10th May 2022 York Archaeology conducted a structural watching brief of a timber-framed building at 1 Little Shambles, York, which is a Grade II Listed Building (NHLE: 1257477). The archaeological work was undertaken on behalf of the City of York Council, to fulfil a planning condition for listed building consent (ref 19/01199/LBC). The work consisted of a historic building recording during the repair, removal and replacement of selected timbers, infill panels and defective windows within the rear southeast gable elevation of the extant timber-framed building. Equivalent work was also undertaken within the southeast end of the returning southwest side elevation.

The watching brief established that there appeared to have been substantial restoration work in the past, most drastically during the 1950s, which entailed a considerable degree of timber replacement and later construction of infill panels with additional iron brackets, bolts and the like.

A series of irregularities amongst the timber-framed members and joints were identified including a number of pegs (as well as empty peg holes and/or peg holes filled with lead) and mortices amongst the timbers without any coherent association with the current timber-framed assembly. There are also pegs which bear no association with any apparent joint assembly and may be instead ornamental features. Other ornamental pegs were identified within existing joints although these do not extend through the timbers securing any tenon.

The partial removal of infill panels did not reveal any evidence of wattle-and-daub construction (which requires stave auger holes and grooves in the opposite timber member), except for the crown post with grooves on both lateral sides.

Although the majority of the timbers appear to be later spurious replacement, the main historic form of the building has been maintained, encompassing a small number of primary historic timber members including the principal posts (except for the lower section of post 1), the crown post within the southeast elevation, and the right wall plate of the northeast side elevation. Nevertheless, the current floor levels appear to vary slightly from their original location as indicated by a series of obsolete historic mortices of primary girding beams, as well as associated braces. The current floor joists are also likely to be later members aligned with their corresponding replaced beams.

KEY PROJECT INFORMATION

Project Name	1 Little Shambles, York
YAT Project No.	6187
Document Number	2022/127
Type of Project	Archaeological/Structural Watching Brief
Client	City of York Council
Planning Application No.	19/01199/LBC
NGR	SE 60449 51882
Museum Accession No.	N/A
OASIS Identifier	yorkarch3-508170

REPORT INFORMATION

Version	Produced by		Edited by		Approved by	
	Initials	Date	Initials	Date	Initials	Date
1	AMO	14/07/2022	KS	25/07/2022	MS	29/07/2022

Copyright Declaration:

York Archaeology give permission for the material presented within this report to be used by the archives/repository with which it is deposited, in perpetuity, although York Archaeology retains the right to be identified as the author of all project documentation and reports, as specified in the Copyright, Designs and Patents Act 1988 (chapter IV, section 79). The permission will allow the repository to reproduce material, including for use by third parties, with the copyright owner suitably acknowledged.

Disclaimer:

This document has been prepared for the commissioning body and titled project (or named part thereof) and should not be relied upon or used for any other project without an independent check being carried out as to its suitability and prior written authority of the author being obtained. York Archaeology accepts no responsibility or liability for the consequences of this document being used for a purpose other than that for which it was commissioned.

1 INTRODUCTION

Between 20th April and 10th May 2022 York Archaeology (YA) conducted a structural watching brief of a timber-framed building at 1 Little Shambles, York, which is a Grade II Listed Building (NHLE: 1257477). The archaeological work was undertaken on behalf of the City of York Council (CYC), to fulfil a planning condition for listed building consent (ref 19/01199/LBC).

The work consisted of a historic building recording during the repair, removal and replacement of selected timbers, infill panels and defective windows within the rear southeast gable elevation of the extant timber-framed building. Equivalent work was also undertaken within the southeast end of the returning southwest side elevation.

2 SITE LOCATION AND DESCRIPTION

The site is located at 1 Little Shambles, York, YO1 7LY (NGR: SE 60449 51882; Figure 1). The site comprises a timber-framed building of three storeys with a pitched roof covered with pantiles. It features gables to the street front and the rear elevations. Both first and second floors jettied out on the front elevation. The site is bounded by the Shambles Market to the southwest, a similar timber-framed building to the northeast along The Shambles, Little Shambles to the northwest and a small two-storey building to the southeast which is a later extension of a building along The Shambles.

The site is a Grade II Listed Building (NHLE 1257477) located within the City Centre Area of Archaeological Importance, designated in 1979. The property is also within the Historic Core Conservation Area, Character Area 10 (The Medieval Streets).

3 AIMS AND METHODOLOGY

The principal aim of the structural watching brief was to record any historic fabric revealed during the restoration works and any evidence of construction of the timber-framed building, which required a Level 2 historic building recording as set out in the Historic England guidance (2016).

The building recording was undertaken to the methodology outlined in the Written Scheme of Investigation (WSI) produced by YA (2019/179), revised in 2022 and subsequently approved by CYC (Appendix 2). The WSI sets out the requirements and methodologies for the survey. All works were carried out following industry standards and best practice (CifA 2019a and 2019b, Historic England 2016).

Description of timber members follows the numerical code assigned previously by MCA (2019) in a timber assessment. General and detailed elevation drawings were recorded and compiled as Figures 2-6. The photographic record includes 48 high-quality TIFF images reproduced in the report as plates.

4 HISTORICAL BACKGROUND

The following is an extract from the WSI with additional information from previous structural and archaeological works.

The site is located outside the Roman fortress of *Eboracum* but is within close proximity to the Roman walls and gatehouse. The *via principalis*, one of the major internal thoroughfares within the fortress preceded Petergate and exited the fortress in King's Square, the *porta principalis sinistra* (RCHME 1962). A large gritstone, as well as the Roman sewer, was encountered during works in King's Square to repair a collapsed sewer in 1990 and was interpreted as part of the Roman Gatehouse (YAT 1990).

The Anglian period in York is difficult to define as there is limited evidentiary material. However, the fortress was still occupied during the post-Roman era. A small amount of Anglo-Saxon pottery sherds was recovered during L.P. Wenham's excavations on King's Square but little else in the area (Addyman 1999). The street name 'The Shambles' comes from the Anglo-Saxon *Fleshammels* ('flesh-shelves') and dates the street and its butchery history to the period. The Anglo-Scandinavian period is equally as ill-defined in The Shambles area. The nearby streets Petergate and Colliergate each take the suffix 'gate' from Norse, meaning street. The plot widths on The Shambles are 4 to 5 meters wide which is consistent with those established in the Anglo-Scandinavian period and identified in houses exposed during both the Coppergate and Hungate excavations (Hall 2004).

The Shambles, or as it was once known The Great Flesh Shambles, was mentioned in the Domesday Book of 1086. The majority of the buildings date originally from the 14th century, although modernisation occurred in the second half of the millennia. Little Shambles was first recorded in 1373 and formally ran to the end of Jubbergate. 1 Little Shambles is a three-storeyed timber-framed building dating from the 15th century, which features a potential early commercial ground floor space (RCHME 1981).

Documentary and material evidence on the history of the property is limited. A program of restoration work occurred at the property in the 1950s (RCHME 1981); prior to this the property had deteriorated significantly. Photographs of the Little Shambles in the early 20th century, prior to the creation of Newgate, illustrate a building façade that had begun to lean forward and subside. By 1929, historical photographs show that the second floor was being supported by props (Maybank Building Conservation 2019). The surrounding buildings were cleared in the 1950s to create the Shambles Market.

The property itself was restored in the 1950s and had also been altered previously at some point after its 15th century construction. The property was designated as a Grade II Listed Building in 1954, after its restoration.

In 2019, Mason Clark Associated (MCA), civil and structural engineering consultants, produced a report with key photographs and sketched drawings for structural repairs of 1 Little Shambles; Maybank Building Conservation (MBC) also conducted a timber assessment of the southeast rear elevation, which established the condition of the timber members and provided an interpretative chronological sequence in an elevation drawing, indicating which structural timbers are original, likely to be historic, or from modern restoration. Both works consisted of visual inspection.

A previous archaeological watching brief, related to the conditional archaeological work for the application of listed building consent, was undertaken by York Archaeological Trust (YAT) between 25th and 26th November 2020. The watching brief was carried out during a structural

inspection by CYC (2020), directed by Paul Pelgram, which involved the removal of small sections of infill panels and brick noggings within the rear southeast elevation. The work was undertaken from a scaffold tower. An interim report of the archaeological watching brief was issued by YAT (report 2020/143) and submitted to CYC, and a copy of the report is included in Appendix 1 of this report. The watching brief concluded that much of the timber frame of the southeast elevation remains sound, although significant decay was identified in various timber members, as well as earlier splice repair and timber replacements. Furthermore, the infill panels are later fabrics fitted during the 1950s restoration work which comprise fine aggregate, sand and cement rendering applied over expanded metal mesh fixed to the side of the timbers with metal staples. In addition to this, the removal of part of the infill panels revealed an iron bracket attached to the right post and tie-beam within the southeast elevation as seen on Plate 3 of the previous interim watching brief report (YAT 2020) included in Appendix 1 of this report.

Recommendation for subsequent repair and replacement was made by Paul Pelgram of CYC; and further archaeological/structural watching brief was also recommended during the removal of subsequent timbers, window frames, infill panels and floor joists (YAT 2020).

5 RESULTS

5.1 Introduction

The site comprises a timber-framed building of three storeys with a pitched roof covered with pantiles. A program of restoration work occurred at the property in the 1950s. The building features gables to the street front and the rear elevations. Both first and second floors jetty out on the front elevation facing Little Shambles (Plates 1 and 2). At first glance, a series of irregularities amongst the timber-framed members and joints were discerned from the ground, which includes empty housings, mortices, and peg holes. These irregularities may be associated with the previous restoration work. Of note is an obsolete mortice within the right post of the doorway within the shopfront facing Little Shambles. It features a pair of three pegs (one of which is missing) which would have secured the tenons of associated mid-rails which are no longer extant (Plate 3). It appears that the post might have been reused/reclaimed from a timber-framed medieval building. Above the obsolete pegged joint, there is a carpenter's assembly mark of medieval pattern (Plate 4) which often comprise long sweeping scratches made with a race knife, whereas marks of the 17th century were more carefully made with a gouge and knife or chisel, while those of the 18th and 19th centuries were small neat and deep marks made with a chisel (Brunskill 1994, 34). It is also noteworthy that no further assembly marks were noticed amongst the entire timber-framed building, including the southwest rear elevation which was closely examined.

5.2 Structural watching brief: 20th April 2022

The external southwest elevation was accessed from a scaffold tower which also extended along the contiguous southwest side elevation. Restoration work began within the gable and second floor of the southwest elevation, including the removal of earlier repair splices and modern infill panels. A series of noteworthy features were identified during the watching brief which are discussed below.

The joints amongst the timber member within the southwest elevation contains several pegs/trenails, as well as empty peg holes and peg holes filled with later lead plugs (Plate 5 and

6). However, some pegs (as well as empty peg holes and/or peg holes filled with lead) were identified amongst the timbers without any coherent association with the current timber-framed assembly. Tie-beam 5 features slightly irregular housings for the wall plates of each side elevations of which the one along the southwest elevation appears to be a later machine-sawn member.

The removal of an earlier repair splice within tie-beam 5 immediately above jowl post 1 and corresponding wall plate revealed a teazle or jowl tenon of post 1, which would have been introduced into a mortice within the tie-beam and secured with a peg, although the tenon has an empty peg hole. While the earlier splice partially obscured the teazle tenon, the associated empty peg hole extends further up beyond the splice housing; thus, the current tie-beam would have not been attached to a discerned joint of post 1 which should be the normal assembly. Furthermore, the jowl post 1 includes two pegs adjacent to the later machine-sawn wall plate and immediately below the tie-beam 5, which bears no association with any apparent joint assembly and may instead be an ornamental feature (Plate 7).

Another possible ornamental peg was identified within the putative joint between tie-beam 5 and left gable brace 9 which is a short type (rather than being broken) acting as a plug inside a partially drilled shallow hole that does not lead into a mortice (Plates 8 and 9).

The joint between tie-beam 5 and post 2 appears to be secured with a peg; a second may have decayed or been removed and the corresponding peg hole is now filled with lead. It is possible that post 2 might have had a jowl similar to its counterpart, although this may have been subsequently modified as a result of a later repair of rot, creating the current angular stepped form. The wall plate of the corresponding side elevation appears to be a historic member partially assembled into a slightly irregular dovetail housing within the tie-beam, although the timber had decayed and the section within the housing is now detached from the wall plate itself (Plates 10 and 11).

The partial removal of infill panels, previously established as being modern replacement, did not reveal any evidence of wattle-and-daub construction which requires stave auger holes and grooves in the opposite timber member (Plates 12-14).

The girding beam 7 between the first and second floor has underside chamfered edges to each end which appears to be slightly inconsistent with this type of structural timber-framed assembly, as the chamfers do not seem to serve any purpose within an external elevation. Although the building could have formerly extended further southwest, and thus the beam could have been an internal feature, the principal historic members, such as post 1 and 2, do not contain evidence of a possible southwest projection as this would have necessitated a series of housings for supplementary timber members (e.g. mortices for additional girding beams) which are absent. Another irregularity with medieval carpentry traditions is the assembly of the floor joists 26 for the second floor which are sandwiched between beam 7 and a thinner beam 6 above it. The spaces between the joists 26 are filled with irregular brick noggings. The floor joists of the floor below are arranged in a similar method.

The joint between post 1 and beam 6 has a peg hole filled with lead. The corresponding joint between post 1 and beam 7 appears to be secured with wooden pegs although there are two

vacant peg holes filled with lead further down which does not match the alignment of the beam or any current member (Plates 15 and 16).

Another vacant peg hole filled with lead was noted further along beam 7 whose associated mortice does not appear to bear any association with the present timber-framed assembly (Plate 17). The joint between beam 6 and associated second-floor braces 11 and 12 and stud 17 are secured with pegs, however the beam includes an empty peg hole and mortice immediately to the southwest of stud 17 which do not correlate with the assembly of any timber member (Plates 18). It is possible that beam 6 might have been reused. Stud 17 also appears to have an empty mortice which once again does not bear any association with the present construction. Directly to the northeast of stud 17, there is a later iron bolted rod securing beams 6 and 7 which might have been fitted during the 1950s restoration work (Plate 19).

The joint between the northeast end of beam 7, with an underside chamfered edge, and post 2 appears to have a pair of empty peg holes although their heads might have decayed partly; whereas the corresponding joint between post 2 and first-floor brace 25 is fixed with a pair of pegs (Plates 20 and 21).

The first-floor level of the returning southwest side elevation comprised a reused girding beam with obsolete and empty housings located adjacent to the southwest face of jowl post 1 (Plate 22). The post itself also contains a large empty mortice and related peg holes immediately below the joint with a first-floor brace (Plate 23).

5.3 Structural watching brief: 10th May 2022

Further restoration work continued revealing structural features within the southwest elevation and part of the returning southwest side elevation adjacent to jowl post 1. Most of the infill panels within the gable of the southwest elevation were removed as part of the restoration work except for a veneer of the internal plaster wall. Additional later scantlings were revealed as part of the modern infill rendering (Plate 24).

The uppermost section of the gable did not contain the metal mesh with cementitious render infilling the panel. Instead the panel was boarded up. Close inspection within the apex indicate that the collar 14 and rafters 3 and 4 are scantling members, which would have replaced earlier timbers. The peg securing the apex between rafters 3 and 4 appears to be the tip or point of a peg, rather than the head, which implies it had been driven from the inner side of the roof. It is also possible that the section of projecting pegs attaching the rafters and the collar may also be their points, based on their slight conical shape. The remaining pegs within the southwest rear elevation correspond to the heads as they would have been driven from the external side, establishing this side as being the upper or fair face of the frame.

The top of the crown post 15 comprises a pair of empty mortices filled with lead (Plate 25). The mortices would have housed a pair of tenons of a former crown purlin which would have extended northwest along the central axis of the building. Further evidence of the former crown purlin's joint was identified along both side of crown post 15 which has a longitudinal empty peg hole which would have secured a pair of tenons housed within the mortices filled with lead (Plates 26 and 27).

The joint between the crown post 15 and side gable braces 9 and 10 features a pair of three pegs on each side although the lowest peg to brace 10 is an empty hole. Its counterpart to brace

9 appears to be another ornamental peg properly shaped to fit into a small hole, rather than extending through the post securing the tenon of brace 9 (Plate 28).

The only clear evidence for wattle-and-daub infill panel of medieval construction was identified along the lateral sides of crown post 15 which features staves grooves on each side between the tie-beam 5 and gable braces 9 and 10. The lower sections of these lateral sides also contain a pair of empty peg holes through the post which would have served the tenon of a brace to the former crown purlin (Plates 29-31). Although staves are often placed vertically in a wattle-and-daub construction, they can also be placed horizontally or diagonally depending on different factors including local traditions, location within a frame and so on. In this case the staves would have been placed horizontally with their base, slotted into the grooves and corresponding points inserted in auger holes within the opposite sides of gable braces 9 and 10, although these were absent. This may indicate that perhaps the braces are a later replacement. Furthermore, the mortices within the tie-beam 5 for gable braces 9 and 10 appear to have been crudely carved with slant sides in order to accommodate the insertion of related tenons into the tie-beam with a rotating movement. A similar mortice was also noted for rafter 4. The crudely executed mortices were partly filled with mortar (Plates 32 and 33). These types of mortices or irregular housings do not conform with medieval carpentry construction. Timber-framed buildings were always prefabricated: all joints had to be cut precisely and fitted together on the ground of a carpenter's workshop before being reassembled.

Additional ferramenta of probable 1950s restoration work was established between the tie-beam 5 and associated posts 1 and 2 which have bolted iron brackets attaching the timber members and reinforcing the structure (Plates 35-37).

Beams 6 and 7 were replaced during the second watching brief, as were additional members such as the second-floor brace 11, and other sections of timbers. The brick nogging between the second-floor joists 26 were also removed enabling a view of the construction which revealed that the joists 26 are placed immediately underneath the internal plaster ceiling of the first floor. This implies that the joists were fitted subsequently to the ceiling being skimmed. This is slightly incongruous, as if the ceiling is earlier than the joists. The joists may have been fitted during the 1950s restoration; there would have been former joists above the plaster coat, although no evidence for that was identified. It is also possible that the joists, or at least some of them, might have been in their place and plasterboards fitted later immediately above their upper sides. One of the joists includes a chiselled carpenter's mark (VIII) although no association with other members, such as a girthing or bridging beam was identified (Plates 38-42).

Inspection of the first-floor level was hindered by the adjacent extension structure to the rear of the timber-framed building. Nevertheless, a number of pegged joints were discerned amongst the joints.

Additional removal of part of infill panels took place within the southeast end of the southwest side elevation adjacent to jowl post 1 where a series of vacant housings were identified previously. An iron bracket, comparable to the ones identified within the southwest elevation, was also observed attaching post 1 and the girthing beam between the first and second floor. The girthing beam has a pegged joint to the post 1, although there is another peg positioned just below the girthing beam which does not correspond with such as putative joint (Plate 43).

The empty mortice and peg holes within post 1 immediately below the joint of a brace within the first floor was clearly inspected, and the underside of the associated brace comprises a blind small mortice whose position bears no association with the present assembly. It appears that the brace may be a reused member reinserted in a later housing within post 1 (Plates 44-46).

The girding beam between the ground and first floor has a pegged joint to jowl post 1. A short distance below the joint, it was noted that the post had been truncated in the past and is currently propped with a later post immediately beneath it (Plates 47 and 48). It is likely that the lower section of post 1 might have been severely decayed and restored in the 1950s.

6 CONCLUSIONS

The site comprises a timber-framed building of three storeys with a pitched roof covered with pantiles which was substantially restored in the 1950s. The structural watching brief has been significantly beneficial in understanding the historic fabrics revealed during the current watching brief, including evidence of construction of the timber-framed building and subsequent alterations. Although the evidences are at times challenging, it was confidently established that there appears to have been substantial restoration work in the past, most drastically during the 1950s, which entailed a considerable degree of timber replacement and later construction of infill panels.

A series of irregularities amongst the timber-framed members and joints were identified including a number of pegs (as well as empty peg holes and/or peg holes filled with lead) and mortices amongst the timbers without any coherent association with the current timber-framed assembly. There are also pegs which bear no association with any apparent joint assembly and may be instead ornamental features. Other ornamental pegs were identified within existing joints although these do not extend through the timbers securing any tenon.

The partial removal of infill panels did not reveal any evidence of wattle-and-daub construction (which requires stave auger holes and grooves in the opposite timber member), except for the crown post with grooves on both lateral sides. Later iron brackets and a bolted rod were identified securing some of the timbers following the partial removal of infill panel and brick noggins between floor joists.

Although the majority of the timbers appear to be later spurious replacement, the main historic form of the building has been maintained encompassing a small number of primary historic timber members including the principal posts (except for the lower section of post 1) and the crown post within the southeast elevation; and the right wall plate of the northeast side elevation. Nevertheless, the current floor levels appear to vary slightly from their original location as indicated by a series of obsolete historic mortices of primary girding beams, as well as associated braces. The current floor joists are also likely later members aligned with their corresponding replaced beams.

The historic building recording during the structural watching brief has provided an archaeological record of historic fabrics and subsequent alterations that is deemed to be appropriate to the building's significance following the project aims.

7 DISSEMINATION AND ARCHIVING

A digital copy of the report in PDF/A format, has been provided to the client and the CYC Archaeologist.

The drawn, written and photographic archive will be fully catalogued and prepared to recognised standards (AAF 2007). The archive will be deposited with ADS and comprises the following items:

- 1 digital copy of the final report (ref. YA/2022/127) in PDF/A file
- 48 high resolution digital photographs in TIFF format
- 1 excel spreadsheet with photographic register for ADS metadata sheet for raster images file

An OASIS online record form has been completed for the project (ID: yorkarch3-508170). A copy of this document has been included as Appendix 3.

8 ACKNOWLEDGEMENTS

The project was managed on behalf of YA by Mary-Anne Slater. Alvaro Mora-Ottomano directed the fieldwork and prepared this report. YA would like to thank Paul Pegram of CYC for commissioning the archaeological work; and the staff of Sorrell Construction for arranging access to the site. The project was monitored by Claire MacRae, CYC Archaeologist.

9 BIBLIOGRAPHY

AAF. 2011. *Archaeological Archives: A guide to best practice in creation, compilation, transfer and curation*. Archaeological Archives Forum.

Addyman, P. V. (ed.) 1999. *Anglian York: a survey of the evidence*. York Archaeological Trust.

Brunskill, R. W. 1994. *Timber Building in Britain*. London: Victor Gollancz.

Chartered Institute for Archaeologists (CIfA). 2019a. *Standard and guidance for the archaeological investigation and recording of standing buildings or structures*. Reading: Chartered Institute for Archaeologists.

CIfA. 2019b. *Code of Conduct*. Reading: Chartered Institute for Archaeologists.

City of York Council (CYC). 2020. *1 Little Shambles – Listed Building Application No: 19/01199/LBC - Repair and replace select external timbers, remove and replace select infill panels and replace defective windows to rear south-east elevation*. Unpublished CYC report.

Hall, R. A. (ed.) 2004. *Aspects of Anglo-Scandinavian York*. York Archaeological Trust.

Historic England. 2016. *Understanding Historic Buildings: A Guide to Good Recording Practice*. Historic England: Swindon.

Mason Clark Associates (MCA). 2019. *1 Little Shambles, York. Key photographs for structural repairs*. Unpublished MCA report 17266-Y-01.

Maybank Building Conservation (MBC). 2019. *No. 1 Little Shambles. Historic Timber Assessment*. Unpublished MBC report April 2019 version 1.

Royal Commission on Historical Monuments of England (RCHME). 1962. *An Inventory of the Historical Monuments in City of York. Volume 1, Eburacum, Roman York.*

RCHME. 1981. *An Inventory of the Historical Monuments in City of York, Volume 5. The Central Area.* London.

York Archaeological Trust (YAT). 1990. Kings Square sewer repair: Watching Brief. Unpublished report YAT.

YAT. 2020. *1 Little Shambles, York. Archaeological Watching Brief.* Unpublished interim report YAT 2020/143.

YAT. 2022 revision. *Written Scheme of Investigation for Archaeological Investigations, Watching Brief. 1 Little Shambles, York.* Unpublished report YA/2019/179.



Plate 1: Front façade of the site at 1 Little Shambles, York



Plate 2: Rear elevation photographed in 2019 prior to the repair work (courtesy of Mason Clark Associates)



Plate 3: Shopfront with reused post comprising an obsolete mortice with pegs and an empty hole (arrow)



Plate 4: Detail of carpenter assembly's mark above the obsolete mortice joints with pegs and an empty hole



Plate 5: General view of the second-floor level during the recent repair work



Plate 6: Southeast gable truss with removed splices within the tie-beam 5



Plate 7: Removed splice revealing a teazle tenon of jowl post 1 with empty peg hole (arrow)



Plate 8: Joint between tie-beam 5 and the left gable brace 9 with later ornamental short peg



Plate 9: Detail of peg hole which does not pierce the tie-beam or extends through to a mortice



Plate 10: Joint between the tie-beam 5 and principal post 2 to the northeast end of the rear elevation



Plate 11: Detail of partially decayed upper section of the wall plate and dovetail mortise above it



Plate 12: Northeastern side of the second floor during the partial removal of infill panels



Plate 13: General view of the southwestern side of the second floor during the repair work



Plate 14: Detail of partially removed infill panels between post 1 and second-floor brace 11



Plate 15: Chamfered edge within the southwestern end of beam 7 (arrow) adjacent to post 1



Plate 16: Peg holes filled with lead within post 1 (arrows)



Plate 17: Beam 7 with vacant peg hole filled with lead (arrow)



Plate 18: Central area of beam 6 with an empty peg hole and mortice (arrow)



Plate 19: Later iron bolted rod securing beams 6 and 7 to the right of stud 17 (arrow)



Plate 20: Chamfered northeastern end of beam 7 and empty peg holes within post 2



Plate 21: Joint between post 2 and first-floor brace 25 with pegs



Plate 22: First-floor level of the southwest side elevation with reused girthing beam



Plate 23: Southwest face of post 1 with empty peg holes of a vacant mortice



Plate 24: Gable with partially removed infill panels



Plate 25: Uppermost section of gable following the removal of infill panel



Plate 26: Crown post 15 with lead-filled mortices of former crown purlin and related empty peg hole (arrow)



Plate 27: Detail of empty peg hole of former crown purlin within the right lateral side



Plate 28: Crown post 15 with later ornamental short peg



Plate 29: Southwest face of the crown post 15 with stave groove and empty peg holes



Plate 30: Northeast face of the crown post 15 with stave groove and empty peg holes



Plate 31: Detail of empty peg holes of former crown brace



Plate 32: Tie-beam with partial empty mortice for rafter 3 and crudely incised housing for gable brace 9



Plate 33: Tie-beam with partially filled-in mortice for rafter 4



Plate 34: Jowl post 1 with iron bracket attached to the underside of tie-beam 5



Plate 35: Detail of iron bracket attached to post 1 and tie-beam 5



Plate 36: Post 2 with iron bracket attached to the underside of tie-beam 5



Plate 37: Detail of iron bracket attached to post 2 and tie-beam 5



Plate 38: Replaced beam 7 and second-floor joist 26



Plate 39: Floor joists 26 with plaster ceiling above them



Plate 40: Detail of plaster ceiling immediately over the joists 26



Plate 41: Additional view of ceiling joist inside the first floor with plaster ceiling over it



Plate 42: Ceiling joist with carpenter's mark VIII and plaster ceiling directly above it



Plate 43: Partial removed infill panel within the southwest elevation with iron bracket



Plate 44: Detail of empty mortise within the southwest face of post 1



Plate 45: Empty small mortice within brace on the southwest elevation to post 1



Plate 46: Detail of mortice within the underside of brace to the southwest face of post 1



Plate 47: Southwest side elevation with truncated post 1 below the girding beam



Plate 48: Detail of truncated post 1

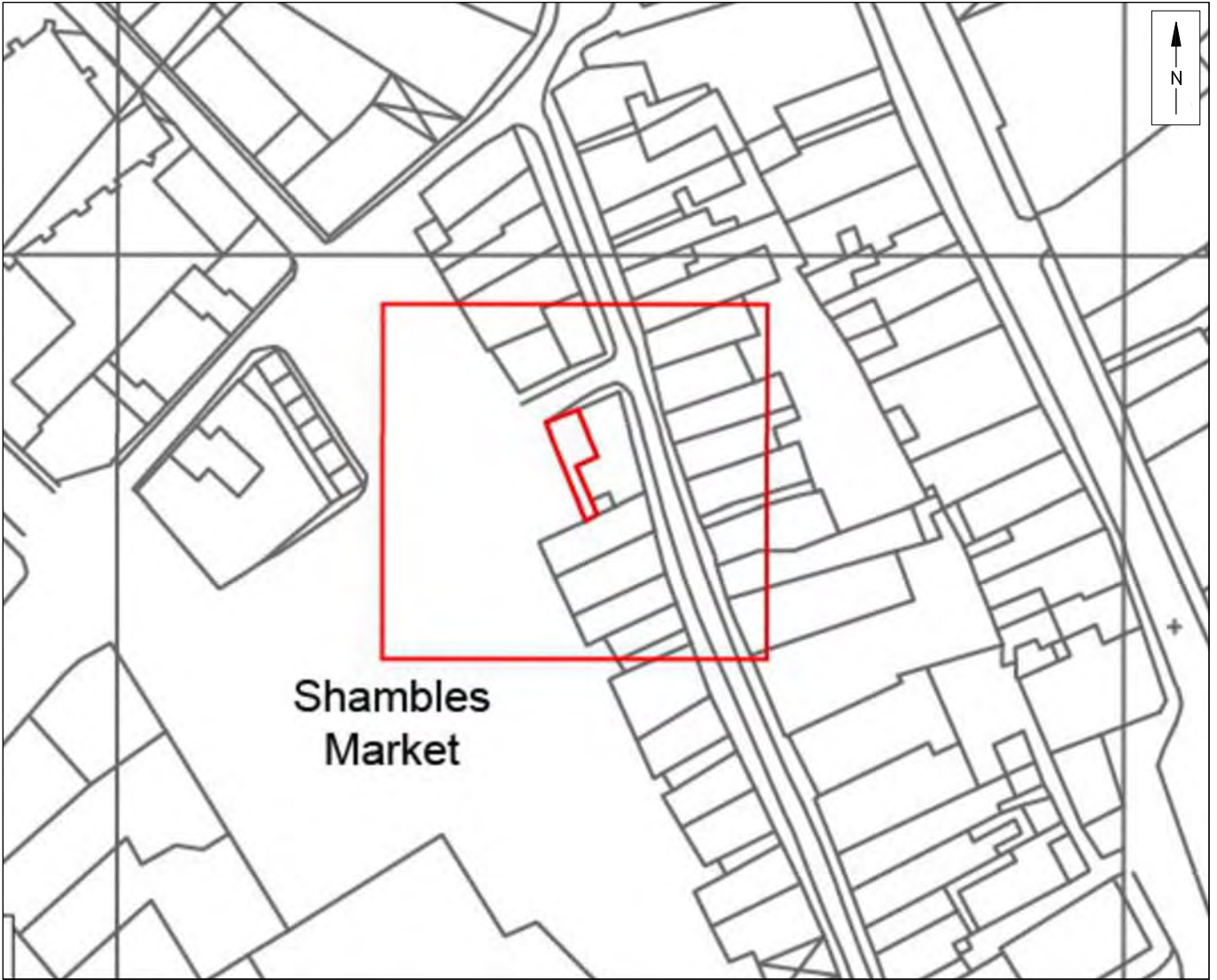


Figure 1 - Site location
6187 - 1 Little Shambles, York

Scale at A4 - Varies
Drawn by AMO

GABLE

2nd FLOOR

1st FLOOR

GROUND FLOOR

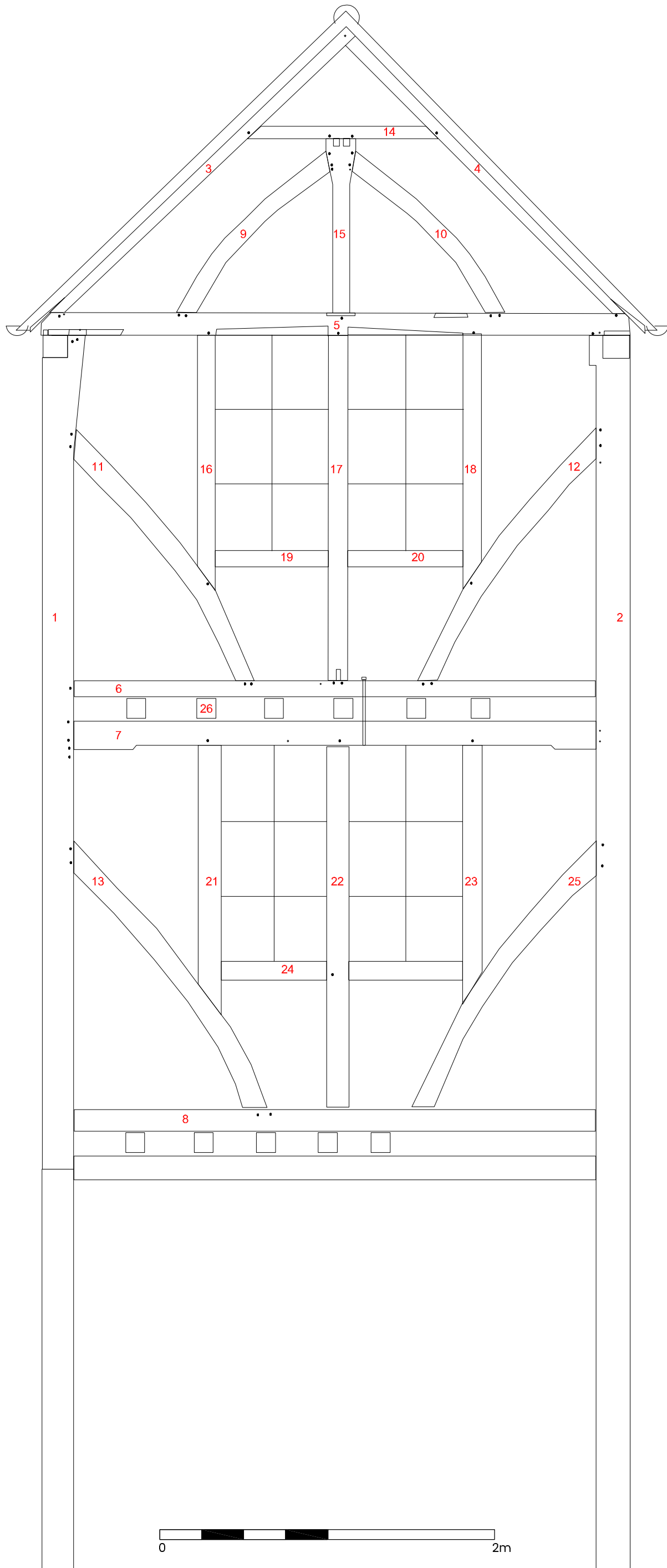
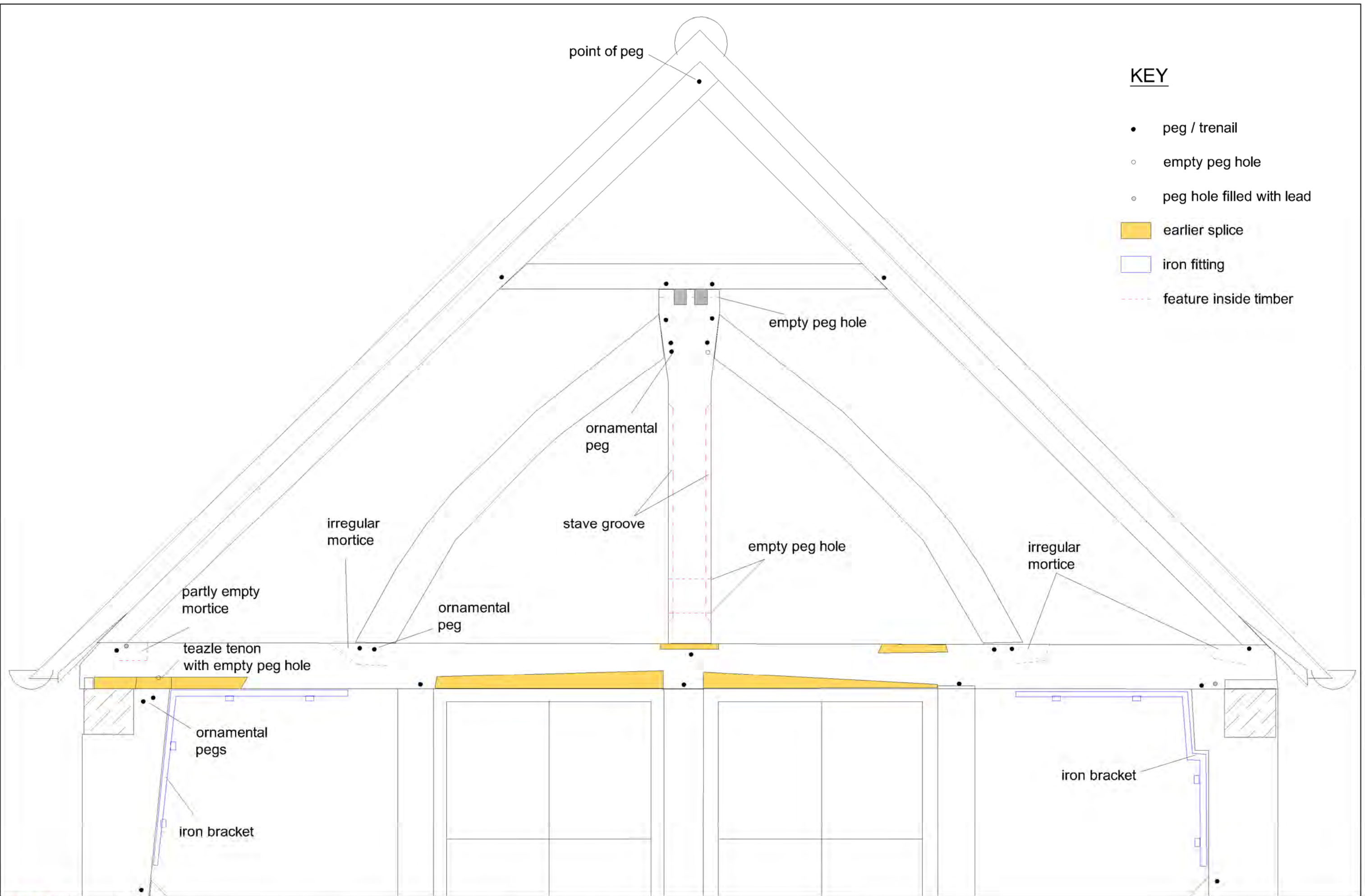


Figure 2 - Southeast elevation with number of timbers based on MBC 2019
6187 - 1 Little Shambles, York

Scale at A3 - 1:25
Drawn by AMO



KEY

- peg / trenail
- empty peg hole
- ◉ peg hole filled with lead
- earlier splice
- iron fitting
- - - feature inside timber

Figure 3 - Southeast elevation - detail of gable
6187 - 1 Little Shambles, York



Scale at A3 - 1:10
Drawn by AMO



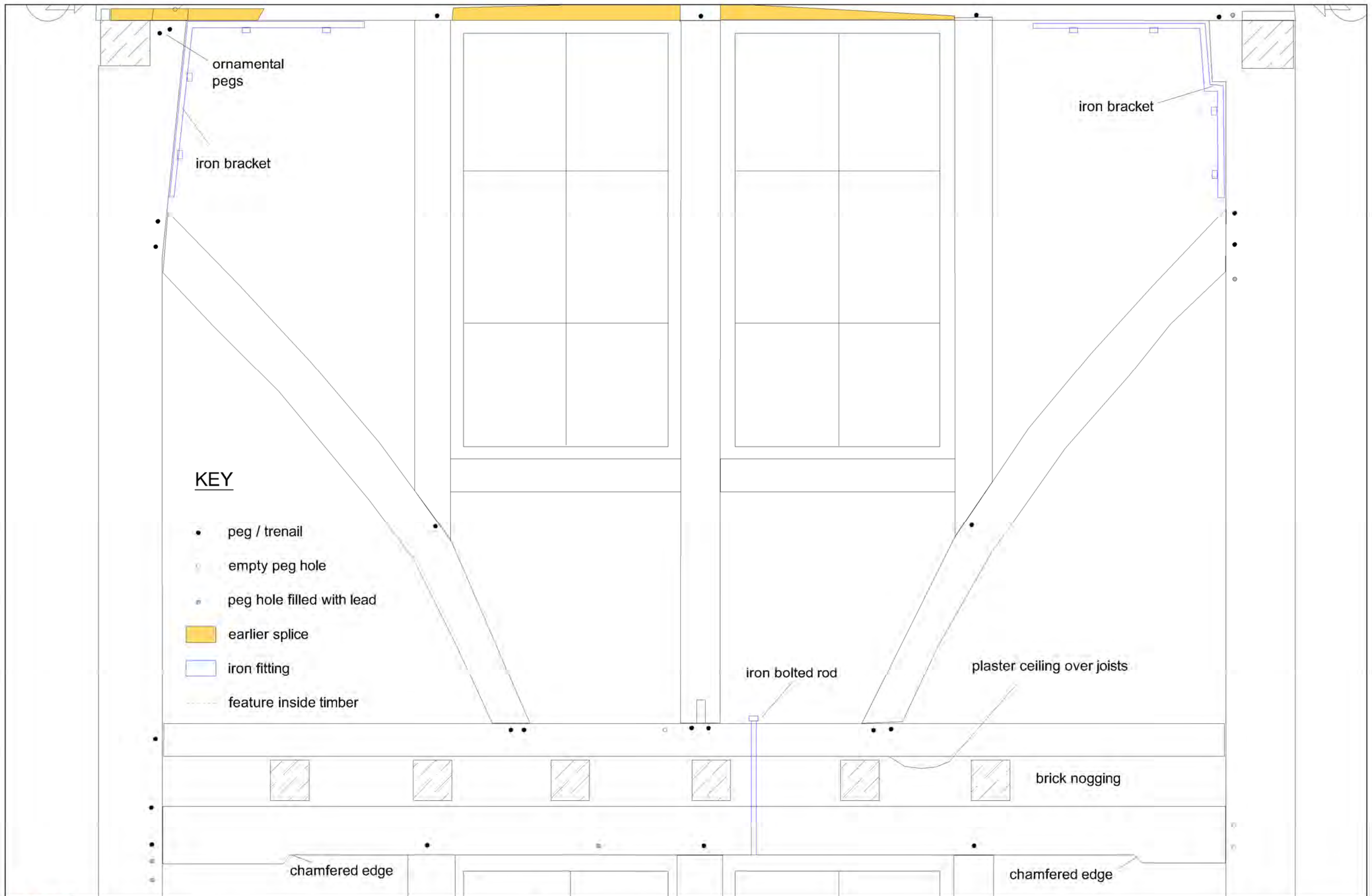


Figure 4 - Southeast elevation - detail of second floor
6187 - 1 Little Shambles, York



Scale at A3 - 1:10
Drawn by AMO

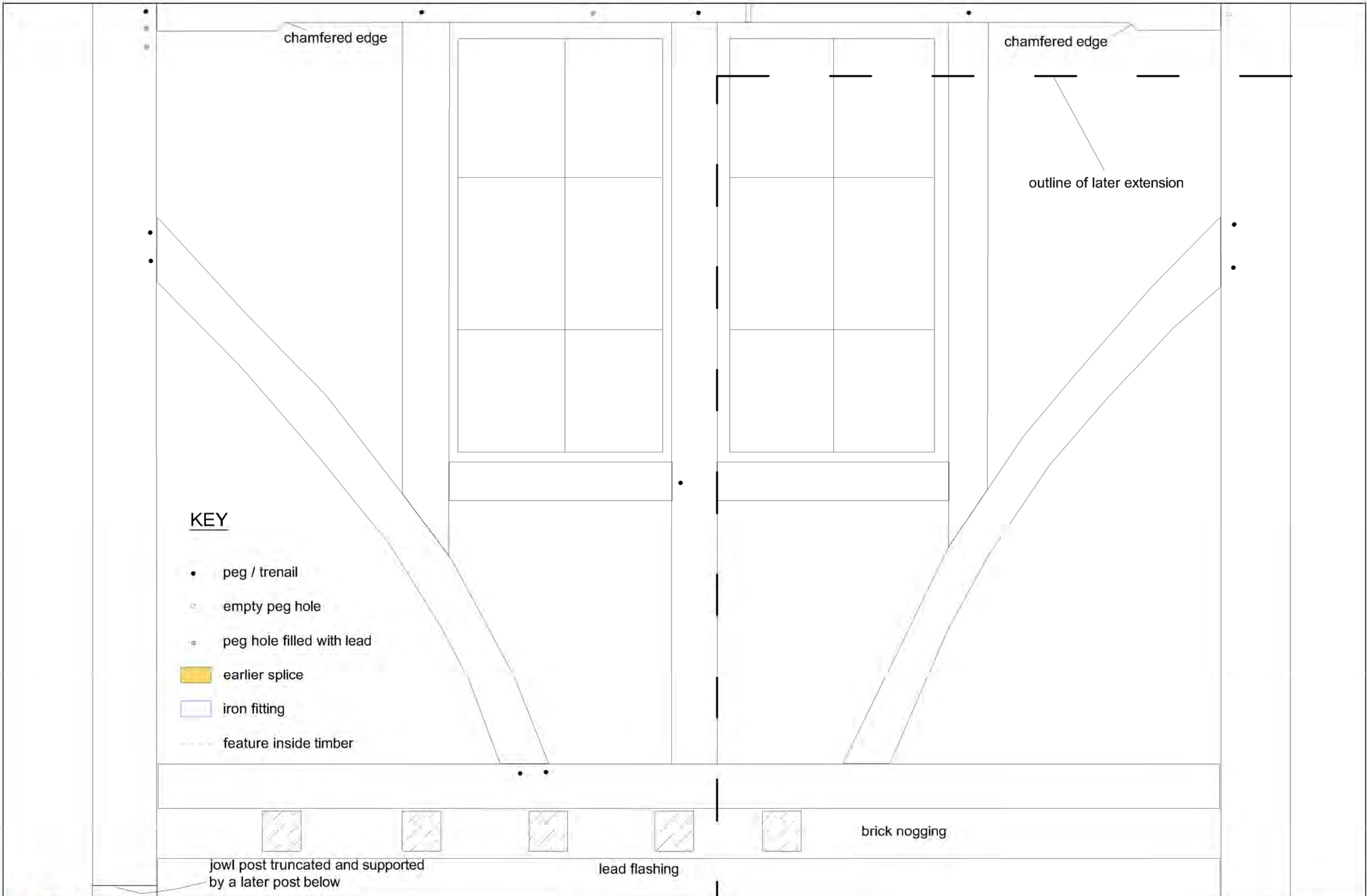


Figure 5 - Southeast elevation - detail of first floor
6187 - 1 Little Shambles, York



Scale at A3 - 1:10
Drawn by AMO

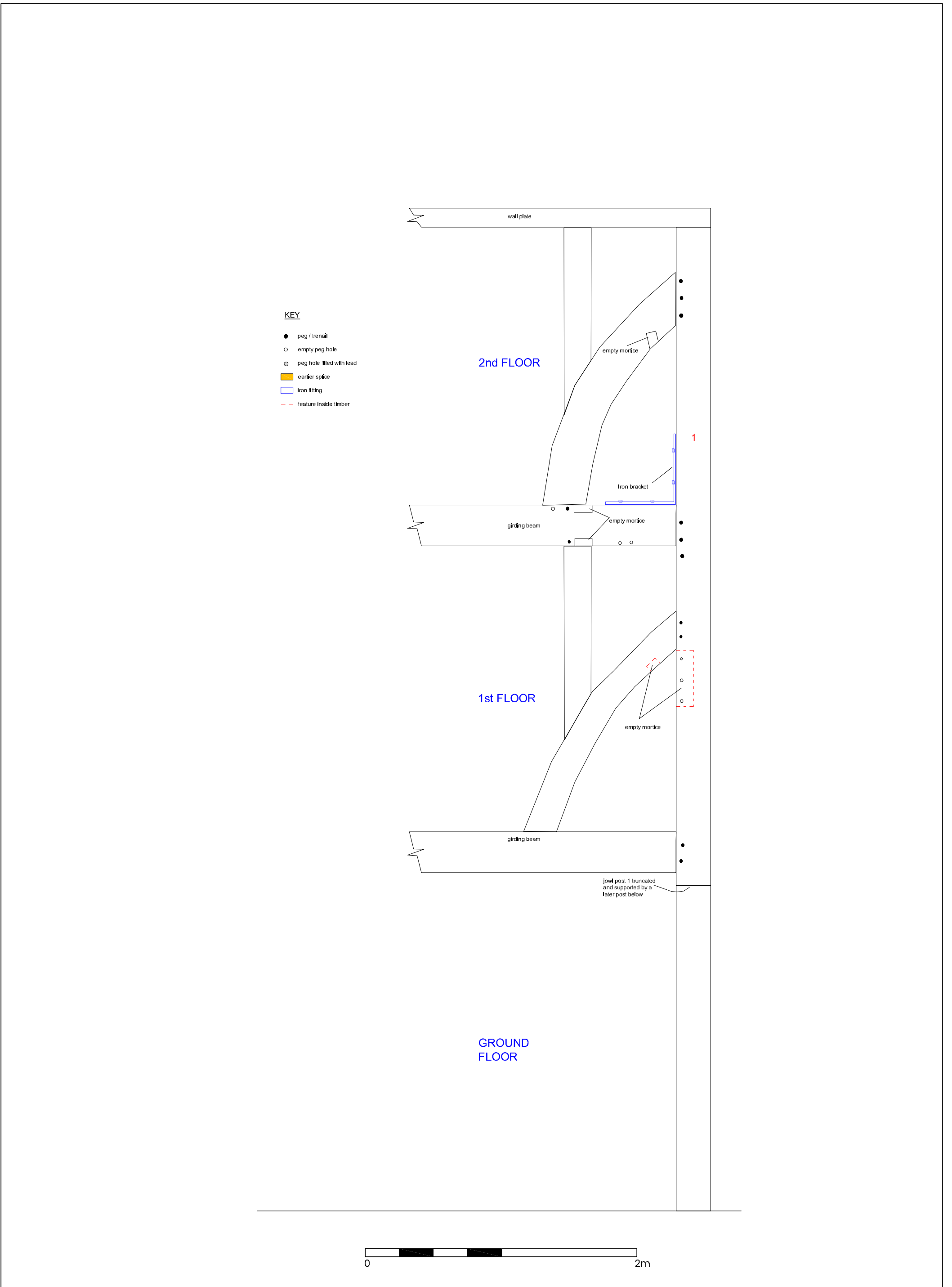


Figure 6 - Southeast end of the southwest side elevation
6187 - 1 Little Shambles, York

Scale at A3 - 1:25
Drawn by AMO



YORK ARCHAEOLOGICAL TRUST

SITE	1 Little Shambles, York		
CLIENT NAME	City of York Council		
YAT PROJECT #	6187	YAT REPORT #	2020/143
MUSEUM ACCESSION #	N/A	GRID REFERENCE	SE 60445 51881
PLANNING REFERENCE #	19/01199/LBC	AAI OPS NOTICE #	N/A

INTRODUCTION

A watching brief on investigation works concerning the repair and replacement of select external timbers, select infill panels and replacement of defective windows on south-east rear elevation of 1 Little Shambles, York was undertaken by York Archaeological Trust on behalf of City of York Council between 25th November and 26th November (NGR SE 60445 51885; Figure 1).

The objective of the watching brief was to record any historic fabric revealed through the works and any evidence revealing construction of the building.

ARCHAEOLOGICAL AND HISTORICAL BACKGROUND

1 Little Shambles is a three-storey timber framed building with a pantile roof. It is gabled on the street front and rear elevations, and both 1st and 2nd floors jetty out on the front elevation. Constructed in the 15th century it was extensively restored in the 1950s (RCHME 1981, 156).

Inspection of the south-east elevation, carried out as part of historic timber assessment by Maybank Buildings Conservation in 2019, identified that much of the timber frame comprises of likely original timbers. Later alterations, probably dating to the 19th century, included repairs and replacements to subsidiary studs and window rails (Maybank Buildings Conservation 2019).

1 Little Shambles was designated a Grade II Listed Building in 1954, Listing Number 1257477 (historicengland.org.uk).

METHODOLOGY

A continuous watching brief was maintained on the inspection of external timbers and infill panels across the south-east rear elevation of 1 Little Shambles.

Each timber and window frame was visually inspected by Paul Pegram, City of York Council Building Technologist, and probed to establish the extent of decay (Plate 1). Elements of re-set brickwork around joists at 1st and 2nd floor level were removed to allow access to joist ends as well as upper and lower rails in those locations (Plate 2).

Render infill was inspected by cutting out sections approximately 100mm across. This was undertaken at one location on the south-west side elevation at 2nd floor level and five locations across the south-east rear elevation.

Following the investigation works removed brickwork was reinstated and areas of removed render infill replaced.

RESULTS

Decay was identified in timber frame elements established as 15th century in date, likely historic and likely 20th century, by the historic timber assessment (Maybank Buildings Conservation 2019).

Decay was identified in all window frames in the south-east rear elevation, except the north-east 2nd

COMPLETED BY	B. Savine	CHECKED BY	M. Slater	FINISHED	16/12/20
FINDS	0	SAMPLES	0	PAGE	1 of 8
		PHOTOS	67		

Registered Charity in England & Wales (509060) & Scotland 47 (SCO42846)
in England No. 1430801



Registered Office:
Aldwark, York YO1 7BX Without Share
Tel: 01904 663000 Fax: 01904 663024



A Company Limited by Guarantee
Capital Registered

Offices in: SHEFFIELD, trading
trading as *Trent & Peak Archaeology*

as *ArchHeritage* GLASGOW, trading as

Northlight Heritage NOTTINGHAM,



YORK ARCHAEOLOGICAL TRUST

SITE	1 Little Shambles, York		
CLIENT NAME	City of York Council		
YAT PROJECT #	6187	YAT REPORT #	2020/143
MUSEUM ACCESSION #	N/A	GRID REFERENCE	SE 60445 51881
PLANNING REFERENCE #	19/01199/LBC	AAI OPS NOTICE #	N/A

floor window frame. Decay was also identified in all four 1st and 2nd floor window frames present in the south-west side elevation.

The infill panels were found to consist of render comprised of fine aggregate, sand and cement applied over expanded metal mesh fixed to the timbers (CYC 2020) (Plate 3). This form of modern construction likely dates to the alteration and renovation of the building around 1950. No structural elements were found behind the infill panels of brickwork (Plate 4).

CONCLUSIONS

While much of the timber frame remains sound, significant decay was identified in various timbers across the south-east rear elevation and recommendation for repair and replacement was made by Paul Pegram, City of York Council Buildings Technologist (CYC 2020). These include:

Top portion of gable

- Three areas of splice repair and/or replacement

2nd floor level

- Repairs to timbers, including raking braces, vertical posts and three joist ends
- Replacement of timbers, including main horizontal beams

1st floor level

- Repairs to timbers, including three joist ends
- Replacement of timbers, including main horizontal beams

2nd floor windows, south-east rear elevation

- Retain and redecorate north-east window
- Replace entire south-west window

1st floor windows, south-east rear elevation

- Replace both windows

2nd floor windows, south-west side elevation

- Repair south-east window
- Replace entire north-west window

1st floor windows, south-west side elevation

- Replace both windows

In addition, the mid-20th century cement render will require removal and replacement.

RECOMMENDATIONS

An archaeological watching brief will be required during the removal of eternal timbers, window

COMPLETED BY	B. Savine	CHECKED BY	M. Slater	FINISHED	16/12/20
FINDS	0	SAMPLES	0	PAGE	2 of 8
		PHOTOS	67		

Registered Charity in England & Wales (509060) & Scotland 47 (SCO42846)
in England No. 1430801



Registered Office:
Aldwark, York YO1 7BX Without Share
Tel: 01904 663000 Fax: 01904 663024



A Company Limited by Guarantee
Capital Registered

Offices in: SHEFFIELD, trading
trading as *Trent & Peak Archaeology*

as *ArchHeritage* GLASGOW, trading as

Northlight Heritage NOTTINGHAM,



YORK ARCHAEOLOGICAL TRUST

SITE	1 Little Shambles, York		
CLIENT NAME	City of York Council		
YAT PROJECT #	6187	YAT REPORT #	2020/143
MUSEUM ACCESSION #	N/A	GRID REFERENCE	SE 60445 51881
PLANNING REFERENCE #	19/01199/LBC	AAI OPS NOTICE #	N/A

frames, panel infills and internal floor joists at 1st and 2nd floor levels.

REFERENCES

City of York Council, 2020, *1 Little Shambles – Listed Building Application No: 19/01199/LBC - Repair and replace select external timbers, remove and replace select infill panels and replace defective windows to rear south-east elevation*

Historic England, Listed Buildings, <https://historicengland.org.uk/listing/the-list/list-entry/1257477>
Accessed on 15/12/2020

Maybank Buildings Conservation, 2019, *No.1 Little Shambles York, Historic Timber Assessment*

RCHMY. Royal Commission on Historical Monuments (England). *An Inventory of the Historical Monuments in the City of York. 5: The Central Area* (1981) (London)

COMPLETED BY	B. Savine	CHECKED BY	M. Slater	FINISHED	16/12/20
FINDS	0	SAMPLES	0	PHOTOS	67
				PAGE	3 of 8

Registered Charity in England & Wales (509060) & Scotland 47 (SCO42846)
in England No. 1430801



Registered Office:
Aldwark, York YO1 7BX Without Share
Tel: 01904 663000 Fax: 01904 663024



A Company Limited by Guarantee
Capital Registered

Offices in: SHEFFIELD, trading
trading as *Trent & Peak Archaeology*

as *ArchHeritage* GLASGOW, trading as

Northlight Heritage NOTTINGHAM,



YORK ARCHAEOLOGICAL TRUST

SITE	1 Little Shambles, York		
CLIENT NAME	City of York Council		
YAT PROJECT #	6187	YAT REPORT #	2020/143
MUSEUM ACCESSION #	N/A	GRID REFERENCE	SE 60445 51881
PLANNING REFERENCE #	19/01199/LBC	AAI OPS NOTICE #	N/A

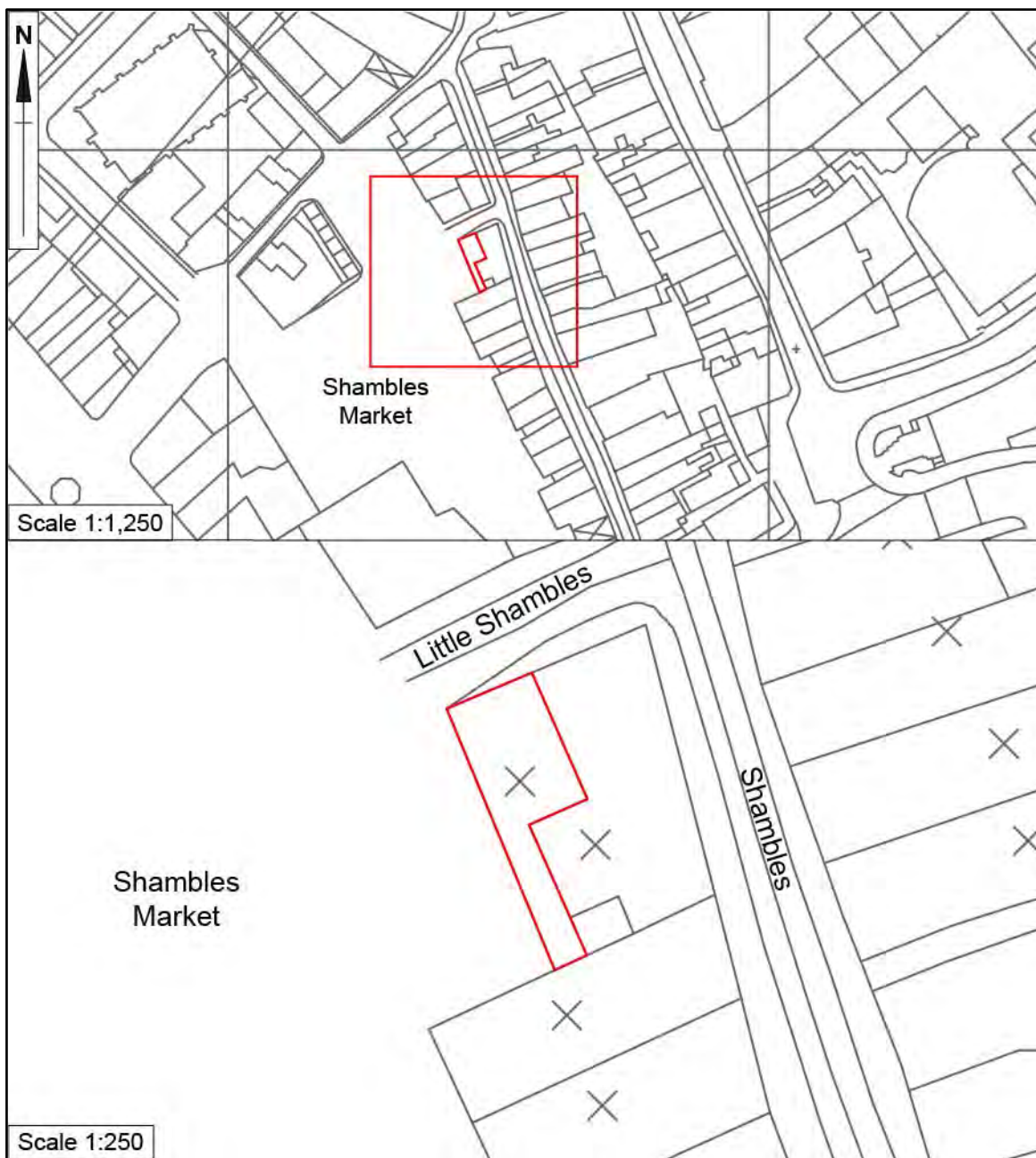


Figure 1 Site Location

Crown copyright reserved. Reproduced with the permission of OS on behalf of HMSO. Licence number 100018343

COMPLETED BY	B. Savine	CHECKED BY	M. Slater	FINISHED	16/12/20
FINDS	0	SAMPLES	0	PHOTOS	67
				PAGE	4 of 8

Registered Charity in England & Wales (509060) & Scotland 47 (SCO42846) in England No. 1430801



Registered Office: Aldwark, York YO1 7BX Without Share Tel: 01904 663000 Fax: 01904 663024



A Company Limited by Guarantee Capital Registered

Offices in: SHEFFIELD, trading trading as *Trent & Peak Archaeology*

as *ArchHeritage* GLASGOW, trading as

Northlight Heritage NOTTINGHAM,



YORK ARCHAEOLOGICAL TRUST

SITE	1 Little Shambles, York		
CLIENT NAME	City of York Council		
YAT PROJECT #	6187	YAT REPORT #	2020/143
MUSEUM ACCESSION #	N/A	GRID REFERENCE	SE 60445 51881
PLANNING REFERENCE #	19/01199/LBC	AAI OPS NOTICE #	N/A



Plate 1 Inspection of timber frame, facing north

COMPLETED BY	B. Savine	CHECKED BY	M. Slater	FINISHED	16/12/20
FINDS	0	SAMPLES	0	PHOTOS	67
				PAGE	5 of 8

Registered Charity in England & Wales (509060) & Scotland 47 (SCO42846)
in England No. 1430801



Registered Office:
Aldwark, York YO1 7BX Without Share
Tel: 01904 663000 Fax: 01904 663024



A Company Limited by Guarantee
Capital Registered

Offices in: SHEFFIELD, trading
trading as *Trent & Peak Archaeology*

as *ArchHeritage* GLASGOW, trading as

Northlight Heritage NOTTINGHAM,



YORK ARCHAEOLOGICAL TRUST

SITE	1 Little Shambles, York		
CLIENT NAME	City of York Council		
YAT PROJECT #	6187	YAT REPORT #	2020/143
MUSEUM ACCESSION #	N/A	GRID REFERENCE	SE 60445 51881
PLANNING REFERENCE #	19/01199/LBC	AAI OPS NOTICE #	N/A



Plate 2 Removal of re-set brickwork between 2nd floor joists and upper and lower rails, facing north

COMPLETED BY	B. Savine	CHECKED BY	M. Slater	FINISHED	16/12/20
FINDS	0	SAMPLES	0	PHOTOS	67
				PAGE	6 of 8

Registered Charity in England & Wales (509060) & Scotland 47 (SCO42846)
in England No. 1430801



Registered Office:
Aldwark, York YO1 7BX Without Share
Tel: 01904 663000 Fax: 01904 663024



A Company Limited by Guarantee
Capital Registered

Offices in: SHEFFIELD, trading
trading as *Trent & Peak Archaeology*

as *ArchHeritage* GLASGOW, trading as

Northlight Heritage NOTTINGHAM,



YORK ARCHAEOLOGICAL TRUST

SITE	1 Little Shambles, York		
CLIENT NAME	City of York Council		
YAT PROJECT #	6187	YAT REPORT #	2020/143
MUSEUM ACCESSION #	N/A	GRID REFERENCE	SE 60445 51881
PLANNING REFERENCE #	19/01199/LBC	AAI OPS NOTICE #	N/A



Plate 3 View of inspection cut-away in mid-20th century render infill panel, facing north, 0.1m scale

COMPLETED BY	B. Savine	CHECKED BY	M. Slater	FINISHED	16/12/20
FINDS	0	SAMPLES	0	PHOTOS	67
				PAGE	7 of 8

Registered Charity in England & Wales (509060) & Scotland 47 (SCO42846)
in England No. 1430801



Registered Office:
Aldwark, York YO1 7BX Without Share
Tel: 01904 663000 Fax: 01904 663024



A Company Limited by Guarantee
Capital Registered

Offices in: SHEFFIELD, trading
trading as *Trent & Peak Archaeology*

as *ArchHeritage* GLASGOW, trading as

Northlight Heritage NOTTINGHAM,



YORK ARCHAEOLOGICAL TRUST

SITE	1 Little Shambles, York		
CLIENT NAME	City of York Council		
YAT PROJECT #	6187	YAT REPORT #	2020/143
MUSEUM ACCESSION #	N/A	GRID REFERENCE	SE 60445 51881
PLANNING REFERENCE #	19/01199/LBC	AAI OPS NOTICE #	N/A



Plate 4 Void behind re-set brickwork between joists at 2nd floor level, facing north-west, 0.1m scale

This Report has been prepared solely for the person/party which commissioned it and for the specifically titled project or named part thereof referred to in the Report. The Report should not be relied upon or used for any other project by the commissioning person/party without first obtaining independent verification as to its suitability for such other project, and obtaining the prior written approval of York Archaeological Trust for Excavation & Research Limited ("YAT"). YAT accepts no responsibility or liability for the consequences of this Report being relied upon or used for any purpose other than the purpose for which it was specifically commissioned. Nobody is entitled to rely upon this Report other than the person/party which commissioned it. YAT accepts no responsibility or liability for any use of or reliance upon this Report by anybody other than the commissioning person/party.

COMPLETED BY	B. Savine	CHECKED BY	M. Slater	FINISHED	16/12/20
FINDS	0	SAMPLES	0	PHOTOS	67
				PAGE	8 of 8

Registered Charity in England & Wales (509060) & Scotland 47 (SCO42846)
in England No. 1430801



Registered Office:
Aldwark, York YO1 7BX Without Share
Tel: 01904 663000 Fax: 01904 663024



A Company Limited by Guarantee
Capital Registered

Offices in: SHEFFIELD, trading
trading as *Trent & Peak Archaeology*

as *ArchHeritage* GLASGOW, trading as

Northlight Heritage NOTTINGHAM,




YORK ARCHAEOLOGICAL TRUST

WRITTEN SCHEME OF INVESTIGATION FOR ARCHAEOLOGICAL INVESTIGATIONS, WATCHING BRIEF

Site Location: 1 Little Shambles, York, YO1 7LY
NGR: NGR SE 60449 51882
Proposal: Repair and replace select external and internal timbers, remove and replace select infill panels and replace defective windows to rear south-east elevation
Planning ref: 19/01199/LBC
Prepared for: City of York Council
Document Number: 2019/179

Version	Produced by:		Edited by:		Approved by:	
	Initials	Date	Initials	Date	Initials	Date
1	BW	9/12/19	MS	16/12/19	MS	16/12/19
2			MS	16/12/19	MS	16/12/19
3			CJ	06/01/20	MS	07/01/20

Version	Approved on behalf of Local Authority by:	
	Curator	Date
1		07/01/2020

1 SUMMARY

1.1 City of York Council has received planning consent for repair works to 1 Little Shambles, York, YO1 7LY (NGR SE 60449 51882). The scheme comprises the repair and replacement of a number of external and internal timbers, infill panels and one defective window. The aim of the watching brief is to record any historic fabric revealed through the works and any evidence of construction of the building.

1.2 The following archaeological condition has been imposed (19/01199/LBC):

A programme of post-determination archaeological mitigation, specifically an archaeological watching brief during removal of external timbers and infill panels is required. The archaeological scheme comprises 3 stages of work. Each stage shall be completed and approved by the Local Planning Authority before it can be discharged.

A) No removal of timbers/panels or any other significant historic material shall take place until a written scheme of investigation (WSI) has been submitted to and approved by the local planning authority in writing. For land that is included within the WSI, no alterations shall take place other than in accordance with the agreed WSI. The WSI should conform to standards set by the Chartered Institute for Archaeologists.

B) The site investigation and post investigation assessment shall be completed in accordance with the programme set out in the Written Scheme of Investigation approved under condition (A) and the provision made for analysis, publication and dissemination of results and archive deposition will be secured. This part of the condition shall not be discharged until these elements have been fulfilled in accordance with the programme set out in the WSI.

C) A copy of a report (or publication if required) shall be deposited with City of York Historic Environment Record to allow public dissemination of results within 3 months of completion or such other period as may be agreed in writing with the Local Planning Authority.

This condition is imposed in accordance with Section 12 of NPPF.

Reason: The building is Grade II listed and contains fabric of historic, aesthetic and evidential significance

1.3 This Written Scheme of Investigation (WSI) has been prepared in response to a Brief supplied by CYC (City of York Council) and the City Archaeologist, Clare MacRae. The work will be carried out in accordance with the Brief and this WSI, and according to the principles of the Chartered Institute for Archaeology (CIfA) Code of Conduct and all relevant standards and guidance.

2 SITE LOCATION & DESCRIPTION

2.1 The proposal site is located at 1 Little Shambles, York, YO1 7LY (Figure 1). It is bounded by the Shambles Market to the south-west, buildings to the east, and Little Shambles to the north.

3 DESIGNATIONS & CONSTRAINTS

3.1 The site is a Grade II Listed Building (Listing No. 1257477). The property is located within the City Centre Area of Archaeological Importance, designated in 1979. The property is also within the Historic Core Conservation Area, Character Area 10 (The Medieval Streets).

3.2 Listed Building Consent was granted for the works subject to the completion the archaeological conditions outlined in the planning consent.

4 ARCHAEOLOGICAL / HISTORICAL INTEREST

- 4.1 Due to the sites location in the heart of the city centre on one of the most prominent medieval streets the archaeological and historical potential of the site is high. No features from the prehistoric period have been encountered but consistent occupation has existed since the Roman period and is evident within the archaeological record.
- 4.2 The site is located outside the Roman fortress of *Eboracum* but is within close proximity to the Roman walls and gatehouse. The *via principalis*, one of the major internal thoroughfares within the fortress preceded Petergate and exited the fortress in King's Square, the *porta principalis sinistra* (RCHME, 1962). A large gritstone, as well as the Roman sewer, was encountered during works in King's Square to repair a collapsed sewer in 1990 and interpreted as part of the Roman Gatehouse (YAT, 1990).
- 4.3 The Anglian period in York is difficult to define as there is limited evidentiary material. However, the fortress was still occupied during the post-Roman era. A small amount of Anglo-Saxon pottery sherds were recovered during L.P Wenham's excavations on King's Square but little else in the area (ed. Addyman, 1999). The street name for The Shambles, comes from the Anglo-Saxon *Fleshammels* ('flesh-shelves') and dates the street and its butchery history to the period. The Anglo-Scandinavian period is equally as ill-defined in The Shambles area. The nearby streets Petergate and Colliergate each take the suffix 'gate' from Norse, meaning street. The plot widths on The Shambles are 4m to 5m wide which is consistent with those established in the Anglo-Scandinavian period and identified in houses exposed during both the Coppergate and Hungate excavations (ed. Hall, 2004).
- 4.4 The Shambles, or as it was once known The Great Flesh Shambles, was mentioned in the Domesday Book of 1086. The majority of the buildings date originally date from the 14th century though modernisation has occurred in the second half of the millennia. Little Shambles was first recorded in 1373 and formally ran to the end of Jubbergate. 1 Little Shambles is a three-storeyed timber-framed house with a pantile roof dating from the 15th century. The house features jetties on the first and second floor and a potential early commercial ground floor space (RCHME, 1981).
- 4.5 Documentary and material evidence on the history of the property is limited. A program of restoration work occurred at the property in the 1950s (RCHME, 1981). Prior to this the property had deteriorated significantly. Photographs of the Little Shambles in the early twentieth century, prior to the creation of Newgate, illustrate a building façade that had begun to lean forward and subside. By 1929 photos show that the 2nd floor was being supported by props (MBC, 2019). The surrounding buildings were cleared in the 1950s to create the Shambles Market.
- 4.6 The property was Grade II Listed in 1954, after its restoration.
- 4.7 No prior archaeological interventions have occurred at 1 Little Shambles. The property itself was restored in the 1950s and had also been altered in antiquity after its 15th century construction. Figure 2, provided by Maybank Building Conservation (2019), illustrates which structural timbers are original, likely historic, or from modern restoration.

5 GROUNDWORKS TO BE MONITORED

- 5.1 This work will comprise a **continuous** watching brief, during removal of external timbers, infill

panels and internal floor joists at both first and second floor levels. The watching brief may be stepped down **to intermittent monitoring**, depending on the results, and following agreement from the Development Control Archaeologist.

6 DELAYS TO DEVELOPMENT SCHEDULE

- 6.1 It is not intended that the archaeological monitoring should unduly delay site works. However, the archaeologist on site should be given the opportunity to observe, clean, assess and, where appropriate hand excavate, sample and record any exposed features and finds. In order to fulfil the requirements of this WSI, it may be necessary to halt the works to enable the archaeology to be recorded properly.

7 RECORDING METHODOLOGY

- 7.1 If a base plan of intervention areas is available, the areas being monitored will be determined using this information.
- 7.2 The aim of the watching brief is to record any historic fabric revealed through the works and any evidence of construction of the building. Although this is an archaeological watching brief, the following building recording methods will be used when taking photographs of the structure.
- 7.3 The principal aim is to produce a written and photographic record of the building. This includes analysis of the building's development and use. The brief corresponds to levels set out in Historic England's guide Understanding Historic Buildings (2016). The photographic element of the watching brief will use level 2 building recording methods as specified in the planning consent.
- 7.4 A photographic record of the structure will be made comprising digital photographs of the building fabric and construction. This will include general views and of details as considered necessary. Digital photography will form the primary site archive. All site photography will adhere to accepted photographic record guidelines. The archive will comprise digital photographs. Photographic scales will be placed in each photograph, where possible. Plans showing the location and direction of each photograph will be compiled.
- 7.5 A written description of the structure will be produced detailing the structure's form, function, date and sequence of development. Attention will also be given to any other features such as: fixtures, fittings, decorative elements.
- 7.6 Unique context numbers will only be assigned if artefacts are retrieved. Where assigned, each context will be described in full on a pro forma context record sheet in accordance with the accepted context record conventions.
- 7.7 Any elevation drawings will be made at a basic scale of 1:10 or 1:20 depending on the size of the feature. All drawings will be related to Ordnance Datum. All drawings will be drawn on inert materials. All drawings will adhere to accepted drawing conventions.
- 7.8 Areas which are inaccessible (e.g. for health and safety reasons) will be recorded as thoroughly as possible within the site constraints. In these instances, recording may be entirely photographic, with sketch drawings only.
- 7.9 All finds will be collected and handled following the guidance set out in the ClfA guidance for

archaeological materials. Unstratified material will not be kept unless it is of exceptional intrinsic interest. Material discarded as a consequence of this policy will be described and quantified in the field. Finds of particular interest or fragility will be retrieved as Small Finds, and located on plans. Other finds will be collected as Bulk Finds, bagged by material type. Any dense/discrete deposits will have their limits defined on the appropriate plan.

- 7.10 All artefacts and ecofacts will be appropriately packaged and stored under optimum conditions, as detailed in the RESCUE/UKIC publication *First Aid for Finds*, and recording systems must be compatible with the recipient museum. All finds that fall within the purview of the Treasure Act (1996) will be reported to HM Coroner according to the procedures outlined in the Act, after discussion with the client and the local authority.
- 7.11 Samples will be taken, as appropriate, in consultation with YAT specialists and the Historic England Regional Science Advisor, as appropriate (e.g. dendrochronology, C14, etc.). Samples will be taken for scientific dating where necessary for the development of subsequent mitigation strategies. Material removed from site will be stored in appropriate controlled environments.
- 7.12 It is highly unlikely that human remains should be discovered during the works, however should human remains be found they will be left *in-situ*, covered and protected pending notification of the discovery to City of York Council and the submission to the Ministry of Justice of an application for excavation. Exhumation of human remains will take place in compliance with environmental health regulations and only with a valid licence from the Ministry of Justice. An osteoarchaeologist will be available to give advice on site.

8 SPECIALIST ASSESSMENT

- 8.1 The stratigraphic information, artefacts and samples will be assessed as to their potential and significance for further analysis and study. The material will be quantified (counted and weighted). Specialists will undertake a rapid scan of all excavated material. Ceramic spot dates will be given. Appropriately detailed specialist reports will be included in the report.
- 8.2 Materials considered vulnerable should be selected for stabilisation after specialist recording. Where intervention is necessary, consideration must be given to possible investigative procedures (e.g. glass composition studies, residues on or in pottery, and mineral-preserved organic material). Allowance will be made for preliminary conservation and stabilization of all objects and a written assessment of long-term conservation and storage needs will be produced. Once assessed, all material will be packed and stored in optimum conditions, in accordance with Watkinson and Neal (1998), ClFA (2014) and Museums and Galleries (1992).
- 8.3 All finds will be cleaned, marked and labelled as appropriate, prior to assessment. For ceramic assemblages, any recognised local pottery reference collections and relevant fabric Codes will be used.
- 8.4 Allowance will be made for the recovery of material suitable for scientific dating and contingency sums will be made available to undertake such dating, if necessary. This will be decided in consultation with City Archaeologist, Clare MacRae.

9 REPORT & ARCHIVE PREPARATION

- 9.1 Upon completion of the site work, a report will be prepared to include the following:

- a) A non-technical summary of the results of the work.
 - b) An introduction which will include the planning reference number, grid reference and dates when the fieldwork took place.
 - c) An account of the methodology and detailed results of the operation, describing structural data, archaeological features, associated finds and environmental data, and a conclusion and discussion.
 - d) A selection of photographs and drawings, including a detailed plan of the site accurately identifying the areas monitored, selected feature drawings, and selected artefacts, and phased feature plans where appropriate.
 - e) Specialist artefact and environmental reports where undertaken, and a context list/index.
 - f) Details of archive location and destination (with accession number, where known), together with a context list and catalogue of what is contained in that archive.
 - g) A copy of the key OASIS form details
 - h) Copies of the Brief and WSI
 - i) Additional photographic images may be supplied on a CDROM appended to the report
- 9.2 The report will be submitted in digital format to the commissioning body as well as direct to City Archaeologist, Clare MacRae for planning purposes and inclusion into the HER.
- 9.3 VA field archive will be compiled consisting of all primary written documents, plans, sections and photographs. Catalogues of contexts, finds, samples, plans, sections and photographs will be produced. York Archaeological Trust will liaise with the Yorkshire Museum prior to the commencement of fieldwork to establish the detailed curatorial requirements of the museum and discuss archive transfer and to complete the relevant museum forms. The relevant museum curator would be afforded access to visit the site and discuss the project results.
- 9.4 The owner of the Intellectual Property Rights (IPR) in the information and documentation arising from the work, would grant a licence to the Local Authority and the museum accepting the archive to use such documentation for their statutory functions and provide copies to third parties as an incidental to such functions. Under the Environmental Information Regulations (EIR), such documentation is required to be made available to enquirers if it meets the test of public interest. Any information disclosure issues would be resolved between the client and the archaeological contractor before completion of the work. EIR requirements do not affect IPR.
- 9.5 Upon completion of the project an OASIS form will be completed at <http://ads.ahds.ac.uk/project/oasis/>.

10 HEALTH AND SAFETY

- 10.1 Health and safety issues will take priority over archaeological matters and all archaeologists will comply with relevant Health and Safety Legislation.
- 10.2 A Risk Assessment will be prepared prior to the start of site works.

11 TIMETABLE & STAFFING

11.1 The timetable will be agreed with the client.

11.2 Specialist staff available for this work:

- Human Remains – Malin Holst, York Osteology Ltd
- Palaeoenvironmental remains – Kristina Krawiec, YAT
- Head of Curatorial Services – Christine McDonnell, YAT
- Finds Researcher – Nicky Rogers, Freelance
- Pottery Researcher – Anne Jenner, YAT
- Finds Officers – Nienke Van Doorn, YAT
- Archaeometallurgy & Industrial Residues – Rachel Cubitt and Dr Rod Mackenzie, Freelance
- Conservation – Ian Panter, YAT

12 MONITORING OF ARCHAEOLOGICAL FIELDWORK

12.1 As a minimum requirement, the City Archaeologist, Clare MacRae will be given at least one week's notice of work commencing and will be informed prior to completion on site. Any changes to this WSI may only be made with the written approval of the City Archaeologist, Clare MacRae. They will be afforded opportunity to visit the site during the works to inspect the site and the archaeological recording, and discuss the project and any further mitigation requirements. York Archaeological Trust will notify them of any significant archaeological discoveries that are made during the course of the project.

12.2 With the client's agreement illustrated notices may be displayed on site to explain the nature of the works.

13 COPYRIGHT

13.1 York Archaeological Trust retain the copyright on this document. It has been prepared expressly for City of York Council, and may not be passed to third parties for use or for the purpose of gathering quotations.

14 BIBLIOGRAPHY

Addyman, P. V., ed. 1999. *Anglian York: a survey of the evidence*. York Archaeological Trust.

APABE, 2017. Guidance for Best Practice for the Treatment of Human Remains Excavated from Christian Burial Grounds in England (2nd edition)

Brown, D. H., 2007. *Archaeological Archives: A Guide to Best Practice in Creation, Compilation, Transfer and Curation*. ClfA/AAA

Campbell, G., Moffett, L., and Straker, V. (eds.), 2011. *Environmental Archaeology. A Guide to the Theory and Practice of Methods, from Sampling and Recovery to Post-Excavation (second edition)*. English Heritage (Portsmouth)

Chartered Institute for Archaeologists (ClfA)

1993. McKinley, J. I., and Roberts, C. (eds.). *Excavation and Post-Excavation Treatment of Cremated and Inhumed Human Remains*. Technical Paper No. **13**

2011. Brown, D.H. *Archaeological Archives: A Guide to Best Practice in Creation,*

Compilation, Transfer and Curation. (2nd edition)

2014. *Standard and Guidance for the Collection, Documentation, Conservation and Research of Archaeological Materials.*

2014. *Standard and Guidance for Archaeological Field Evaluation*

Department for Communities and Local Government, 2019. National Planning Policy Framework.

Hall, R. A., ed. 2004. *Aspects of Anglo-Scandinavian York*. York Archaeological Trust.

Historic England (formerly English Heritage)

2015. *Management of Research Projects in the Historic Environment: The MoRPHE Project Managers' Guide.*

2016. *Preserving Archaeological Remains. Decision-taking for Sites under Development.*

2016. *Understanding Historic Buildings A Guide to Good Recording Practice*

Leigh, D., Neal, V., and Watkinson, D. (eds.), 1998. *First Aid for Finds: Practical Guide for Archaeologists*. United Kingdom Institute for Conservation of Historic & Artistic Works, Archaeology Section; 3rd Revised Edition

Maybank Building Conservation (MBC). 2019. *1 Little Shambles Historic Timber Assessment*.

Museum and Galleries Commission, 1992. *Standards in the Museum Care of Archaeological Collections*.

RCHME (Royal Commission on Historical Monuments of England)

1999. *Recording Archaeological Field Monuments – a Descriptive Specification*.

1962. *An Inventory of the Historical Monuments in City of York, Volume 1, Eburacum, Roman York*

1981. *An Inventory of the Historical Monuments in City of York, Volume 5, Central*.

Schmidt, A., Linford, P., Linford, N., David, A., Gaffney, C., Sarris, A. & Fassbinder, J., 2016. *EAC guidelines for the use of geophysics in archaeology: Questions to ask and points to consider*.

Standing Conference of Archaeological Unit Managers (SCAUM), 2007. *Health and Safety in Field Archaeology*.

YAT. 1990. *Kings Square sewer repair: Watching Brief*. York Archaeological Trust.

For current Historic England guidance documents see:

<https://historicengland.org.uk/advice/latest-guidance/>

<https://historicengland.org.uk/advice/technical-advice/archaeological-science/>

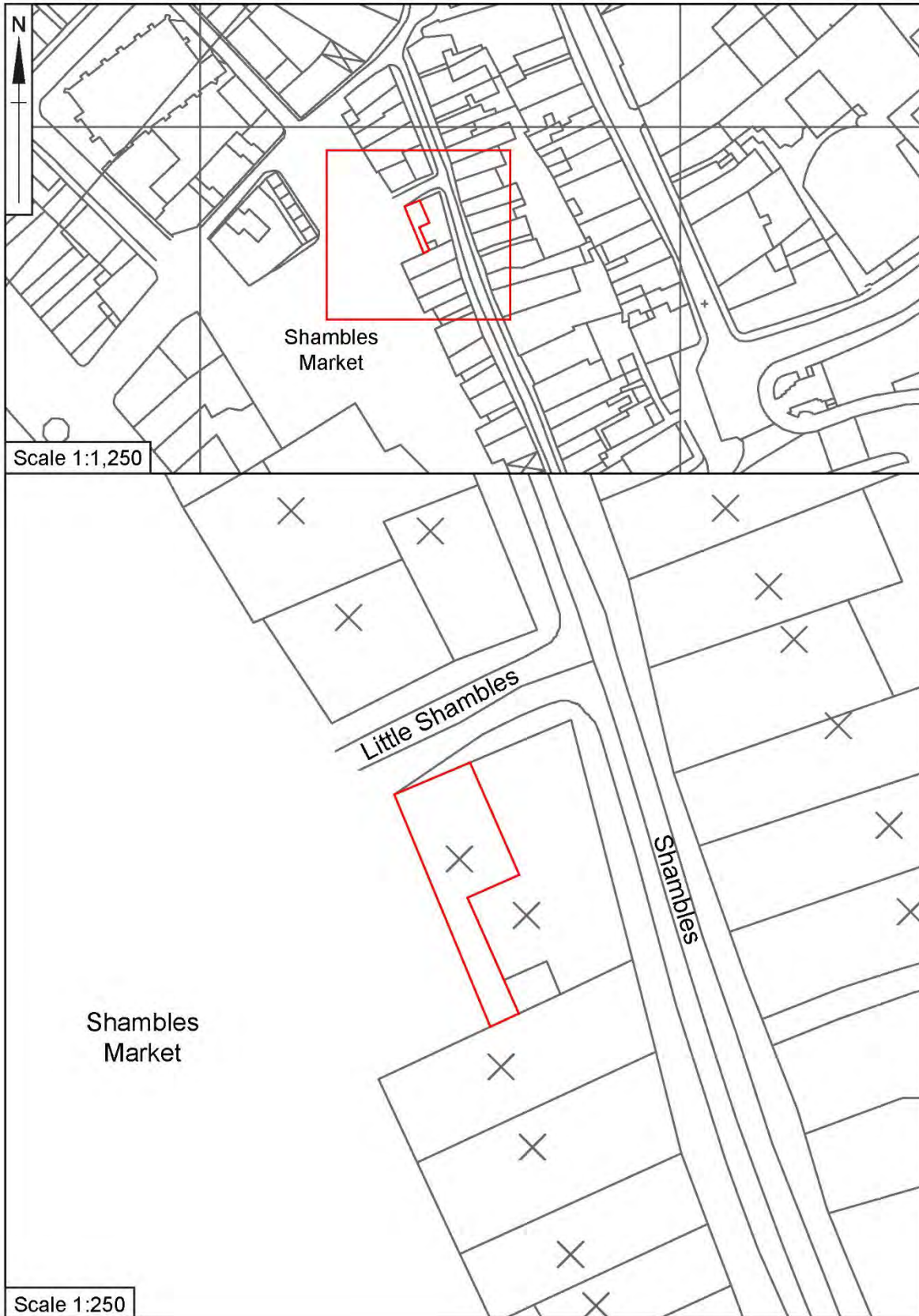


Figure 1 Site Location. Crown copyright reserved. Reproduced with the permission of OS on behalf of HMSO.

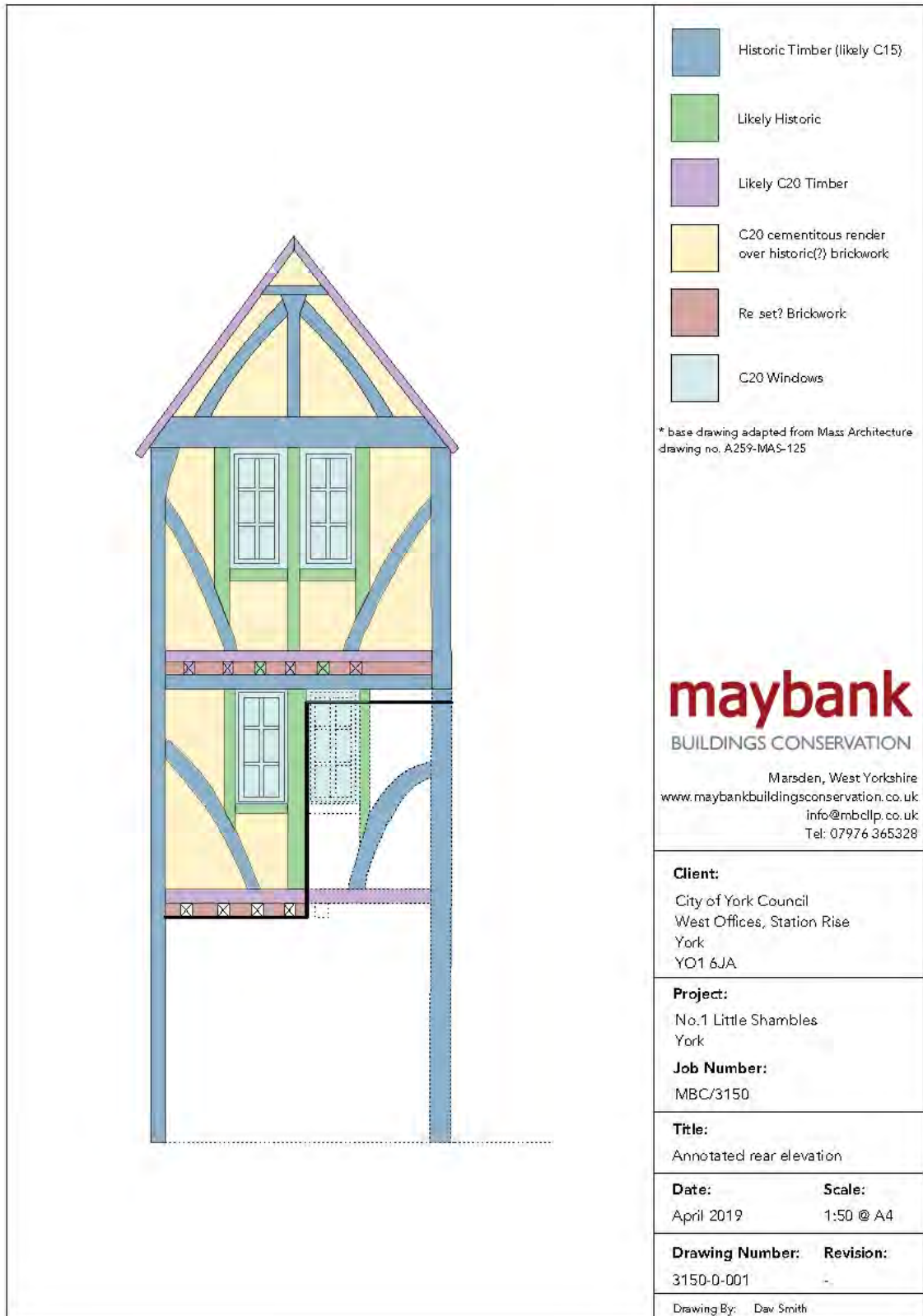


Figure 2 Detail of timber frame and infill panels at 1 Little Shambles with reference to likely historic date.



YORK ARCHAEOLOGICAL TRUST

York Archaeological Trust undertakes a wide range of urban and rural archaeological consultancies, surveys, evaluations, assessments and excavations for commercial, academic and charitable clients. We manage projects, provide professional advice and fieldwork to ensure a high quality, cost effective archaeological and heritage service. Our staff have a considerable depth and variety of professional experience and an international reputation for research, development and maximising the public, educational and commercial benefits of archaeology. Based in York, Sheffield, Nottingham and Glasgow the Trust's services are available throughout Britain and beyond.



© York Archaeological Trust

York Archaeological Trust, Cuthbert Morrell House, 47 Aldwark, York, YO1 7BX

Phone: +44 (0)1904 663000 Fax: +44 (0)1904 663025

Email: archaeology@yorkat.co.uk Website: www.yorkarchaeology.co.uk

© 2019 York Archaeological Trust for Excavation and Research Limited

Registered Office: 47 Aldwark, York YO1 7BX

A Company Limited by Guarantee. Registered in England No. 1430801

A registered Charity in England & Wales (No. 509060) and Scotland (No. SCO42846)

Summary for yorkarch3-508170

OASIS ID (UID)	yorkarch3-508170
Project Name	Watching Brief at 1 Little Shambles, York, YO1 7LY
Sitename	1 Little Shambles, York, YO1 7LY
Activity type	Watching Brief
Project Identifier(s)	6187
Planning Id	19/01199/LBC
Reason For Investigation	Planning: Listed Building Consent
Organisation Responsible for work	York Archaeology
Project Dates	20-Apr-2022 - 10-May-2022
Location	1 Little Shambles, York, YO1 7LY NGR : SE 60449 51882 LL : 53.9595015425695, -1.0802091818793 12 Fig : 460449,451882
Administrative Areas	Country : England County : North Yorkshire District : York Parish : York, unparished area
Project Methodology	The principal aim of the structural watching brief was to record any historic fabric revealed during the restoration works and any evidence of construction of the timber-framed building, which required a level 2 historic building recording as set out in Historic England's guide (2016). The building recording was undertaken to the methodology outlined in the Written Scheme of Investigation (WSI) produced by YA (2019/179), revised in 2022 and subsequently approved by CYC, which is included in Appendix 2. The WSI sets out the requirements and methodologies for the survey. All works were carried out following industry standards and best practice (ClfA 2019a and 2019b, Historic England 2016).

Project Results	<p>The site comprises a timber-framed building of three storeys with a pitched roof covered with pantiles which was substantially restored in the 1950s. The structural watching brief has been significantly beneficial in understanding the historic fabrics revealed during the current watching brief including evidence of construction of the timber-framed building and subsequent alterations. Although the evidences are at times challenging, it was confidently established that there appear to had been substantial restoration work in the past, most drastically during the 1950s restoration, which entailed a considerable degree of timber replacement and later construction of infill panels.</p> <p>A series of irregularities amongst the timber-framed members and joints were identified including a number of pegs (as well as empty peg holes and/or peg holes filled with lead) and mortices amongst the timbers without any coherent association with the current timber-framed assembly. There are also pegs which bears no association with any apparent joint assembly and may be instead ornamental features. Other ornamental pegs were identified within existing joints although these do not extend through the timbers securing any tenon.</p> <p>The partial removal of infill panels did not reveal any evidence of wattle-and-daub construction (which requires stave auger holes and groves in the opposite timber member), except for the crown post with grooves on both lateral sides. Later iron brackets and a bolted rod were identified securing some of the timbers following the partial removal of infill panel and brick noggins between floor joists.</p> <p>Although the majority of the timbers appear to be later spurious replacement, the main historic form of the building has been maintained encompassing a small number of primary historic timber members including the principal posts (except for the lower section of post 1) and the crown post within the southeast elevation; and the right wall plate of the northeast side elevation. Nevertheless, the current floor levels appear to vary slightly from their original location as indicated by a series of obsolete historic mortices of primary girding beams, as well as associated braces. The current floor joists are also likely later members aligned with their corresponding replaced beams.</p> <p>The historic building recording during the structural watching brief has provided an archaeological record of historic fabrics and subsequent alterations that is deemed to be appropriate to the building's significance following the project aims.</p>
Keywords	
Funder	
HER	City of York HER - noRev - LITE Historic England review - unRev - STANDARD
Person Responsible for work	
HER Identifiers	
Archives	

York Archaeology

York Archaeology undertakes a wide range of urban and rural archaeological consultancies, surveys, evaluations, assessments and excavations for commercial, academic and charitable clients. We manage projects, provide professional advice and fieldwork to ensure a high quality, cost effective archaeological and heritage service. Our staff have a considerable depth and variety of professional experience and an international reputation for research, development and maximising the public, educational and commercial benefits of archaeology. Based in York, Sheffield, Nottingham and Glasgow the Trust's services are available throughout Britain and beyond.



© York Archaeology

York Archaeology, Cuthbert Morrell House, 47 Aldwark, York YO1 7BX

Phone: +44 (0)1904 663000 Fax: +44 (0)1904 663024

Email: archaeology@yorkat.co.uk Website: <https://www.yorkarchaeology.co.uk>

© 2022 York Archaeology for Excavation and Research Limited
Registered Office: 47 Aldwark, York YO1 7BX
A Company Limited by Guarantee. Registered in England No. 1430801
A registered Charity in England & Wales (No. 509060) and Scotland (No. SCO42846)