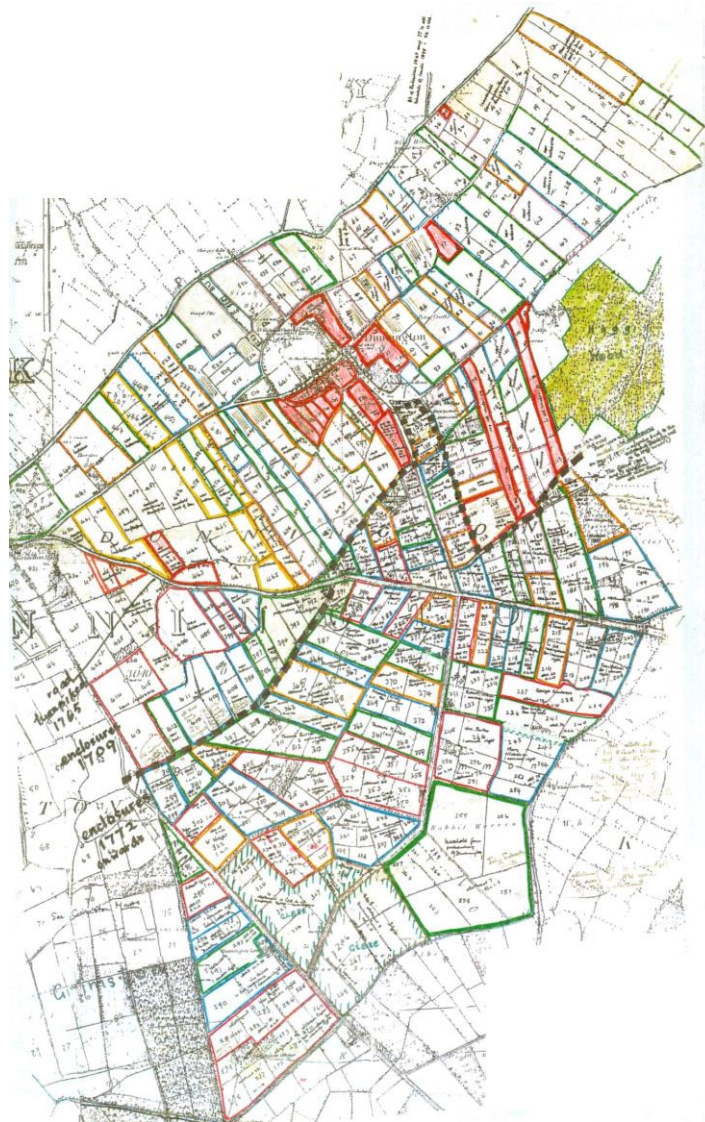


THE HISTORIC LANDSCAPE OF DUNNINGTON, GRIMSTON, AND *IANULFESTORPE*

Prepared for the Friends of Hagg Wood



By Stephen Moorhouse



**The Historic Landscape of the Civil Parish of
Dunnington:**

**the medieval townships of Dunnington, Grimston,
Ianulfestorpe and an un-named township**

By Stephen Moorhouse

**Friends of Hagg Wood
2nd edition
2023**

Dedication To Barbara Pyrah. This booklet is dedicated to Barbara Pyrah, past Curator of Geology at the Yorkshire Museum and founder member of the Friends of Hagg Wood (FHW), who fostered a spirit of enquiry and historical research, enshrined in the FHW Constitution.

Acknowledgements. This report grew out of a FHW initiative to investigate the landscape around Hagg Wood. In 2007 FHW was awarded a Local Heritage Initiative (LHI) grant to study Hagg Wood and the group was very fortunate in securing the services of landscape historian, Stephen Moorhouse to lead this project. Barry Wright was instrumental in carrying out accompanying work, resulting in a booklet entitled *Historic Hedgerow Heritage of Dunnington*.

In 2008 further grant aid was received from Breathing Places to continue the work of investigating the landscape around Dunnington, which includes the medieval townships of Dunnington, Grimston, *Ianulfestorpe* and a further unnamed and undocumented township that became redundant by the 10th century. The City of York Ward Committee helped to fund the project and the York Rotary Club Vikings also made a much appreciated contribution.

Olwyn Fonseca has made available her remarkable coloured maps of Dunnington and Grimston traced from originals in the Lane-Fox family archives. The historical section has benefitted greatly from the private research by Kay Wheeler. We are most grateful to Kay for readily granting access to this material and for allowing it to be used here.

We thank the Lane-Fox family of Braham for permission to use three maps of Grimston which are in their family archives in West Yorkshire Archives Service, Leeds (WYL).

I would like to thank my wife Celia, who has made many valuable comments, including the initial suggestion that led to the identification of the lost Domesday vill of *Ianulfestorpe*, and added considerably to the clarity of the historical sections. Our son, Christopher Moorhouse, completed and standardized all figures as published and produced the camera-ready copy. Linda Maggs was responsible, with other members of the FHW team, for securing the funding for the work on this project and for editing the final draft.

A number of base maps have been produced under licence. Figures 1, 2, 21, 25, 26, 27 (Crown Copyright and Database (2017). Ordnance Survey (Digimap Licence)). Figures 4, 5, 6, 9, 12, 15, 17, 22, 23, 24 (Crown copyright and Landmark Group Limited. All rights reserved (1892-3). The aerial photograph of Grimston (Fig. 19) was provided by English Heritage (EH) and has been reproduced under their licence.

Introduction. The content of this booklet seeks to explain the layout and development of the historic landscape within the area of the modern civil parish of Dunnington, to the east of York. Initially it is important to establish the framework of the medieval landscape: the boundaries of the medieval townships, now obsolete, and the composite farming elements that each possessed. The ever-increasing quantity and range of documentation produced from the 12th century allows the medieval landscape to be understood and reconstructed. Once this framework has been understood, both earlier landscapes upon which it was developed and subsequent landscapes up to the present can be appreciated.

Geology dictated the layout of the man-made landscape, and this is particularly well demonstrated in Dunnington. The York moraine and its geological composition were critical to the orientation and layout of fields from the earliest periods, particularly the farming components of the medieval township (Fig. 2).

Working on single medieval township units is important in itself, but they also need to be seen in their regional setting. A number of wider themes are considered in the historical section. Previous work was charted in the adjacent obsolete medieval township of *Scoreby* (Maggs 2007). The lost vill now forms part of the modern civil parish of Kexby, and results of the work are frequently referred to throughout this booklet.

The text contains many generalisations without supporting evidence. This, and much more, will occur in the forthcoming volume. Only a selection of references are given in the text. Complete references and bibliography will be given in the final volume. The presentation of place and field-names has followed the long-established principles developed by the English Place-Name Society. If a name does not survive with its original meaning, then it occurs in italics. All references to the 1st ed. 6inch Ordnance Survey maps are to their date of survey.

Summary

This booklet highlights the importance of understanding the medieval township units before a full analysis of the landscape history can be appreciated. Field walking, earthwork surveys, documentary evidence and evidence provided by place-names all contribute to our understanding. The location of the territory of the lost Domesday vill of Ianulfestorpe has been identified. Wider regional themes such as the extensive prehistoric co-axial field system to the east of York, the prehistoric routeways, the early multi-township commons, the original extent and use of Till Mire and the importance of Stamford Bridge are all explored.

Front cover: A tracing, by Olwyn Fonseca, of a 'Map of the township of Dunnington in the East Riding of York', 1842 (Borthwick Institute for Historical Research).

Contents

Dedication, acknowledgements, introduction and summary	2
The landscape of Dunnington, Grimston, <i>Ianulfestorpe</i> , and an un-named township	4
Introduction	4
1 Dunnington township.....	5
Documentary evidence	5
Field system,	7
Dunnington village.....	10
Petercroft Lane	11
Rabbit warrens on the common	13
2 Grimston township	13
Documentary evidence	13
Field system	16
Roads	18
Grimston village	18
Manor house	20
Medieval chapel of St Helens	21
3 <i>Ianulfestorpe</i>	21
The purpose of Domesday Book	21
The structure of Domesday Book	22
Location of <i>Ianulfestorpe</i>	22
4 An un-named township	24
Regional themes	26
The co-axial field system	26
Early inter-common grazing	26
Early route-ways	27
Till Mire	29
The importance of Stamford Bridge	30
Conclusion	31
Bibliography	33

The Landscape of Dunnington, Grimston, *Ianulfestorpe*

Introduction

The primary aim of this booklet is to explain the landscape of the medieval townships of Dunnington, Grimston, *Ianulfestorpe* and a lost un-named and undocumented township which had disappeared by the 10th century. These form the basis of the modern civil parish of Dunnington (Fig. 1).

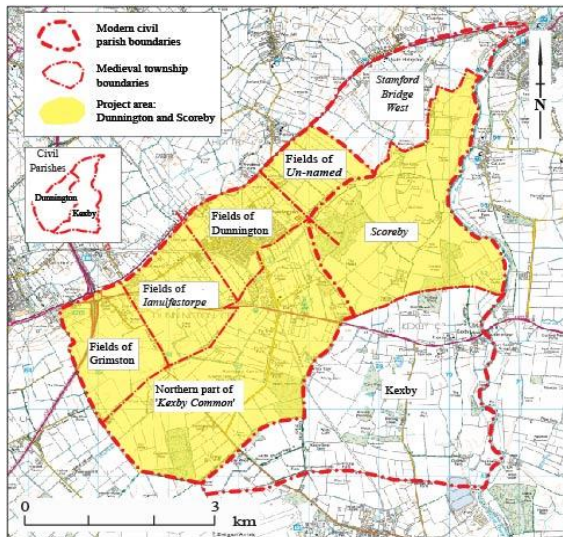


Fig. 1 The modern civil parishes of Dunnington and Kexby together with their constituent medieval townships

The booklet emphasises the importance of establishing the historical framework within the present-day landscape, formed from the natural environment of geology and soil cover, using documents, place-names and maps. The study was used to interpret the results of the botanical work, undertaken by Barry Wright and his team of volunteers. This in turn has enhanced the understanding of the documentary evidence. The project has built on the work carried out in the adjacent medieval township of *Scoreby*, which is now absorbed within the civil parish of Kexby (Fig. 1).

The greatest impact on the appearance of today's landscape has been the medieval township unit. The townships contained the full range of farming elements of the communities, whether the settlement was

nucleated or dispersed. These elements included a fully integrated field system of arable fields, closes, meadows, woodland, common grazing, and access ways between them and the settlement. The distribution of each of these farming elements was dictated by the underlying geology, which in turn governed the overlying soil types. The greatest influence was the east-west moraine, which produced a rich fertile soil on the southern slopes, dictating the distribution of arable land on these soils, with meadows on the interface with the wetlands below, and the rough grazing of Till Mire beyond (Fig. 2).

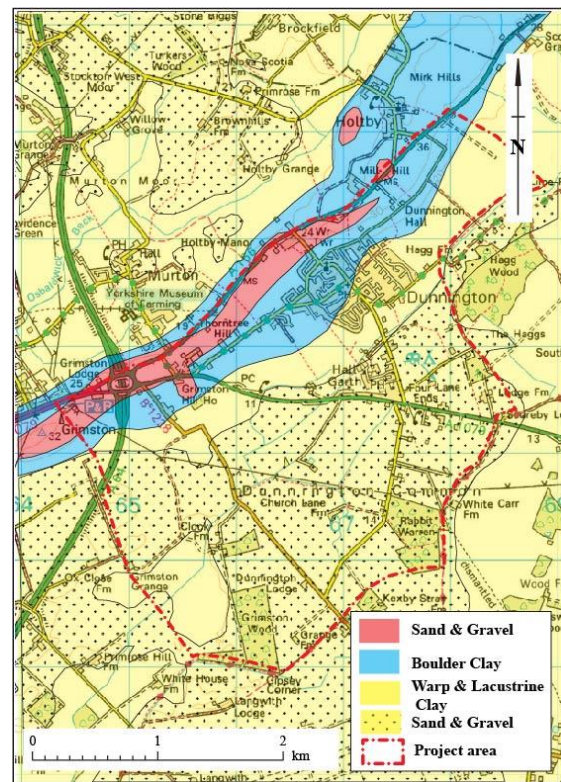


Fig. 2 Geology of the project area, defined in red, highlighting the moraine

From the mid-16th century changing farming practices and administrative boundaries saw major changes to the landscape. The greatest changes in the numerous administrative boundaries came with the 1889 Local Government Act, which saw the creation of many of the modern civil parishes. Census returns show that changes were still being made in

the 1930s. The present-day civil parishes were often created from two or more former medieval townships. For example, Dunnington civil parish contains the medieval townships of Dunnington, Grimston, the lost Domesday vill of *Ianulfestorpe* and the un-named vill, and Kexby civil parish contains the medieval townships of Kexby, *Scoreby* and *Stamford Bridge West*. It is from the boundaries of these medieval townships that their internal field systems can be understood, and not from the larger modern civil parishes (Fig. 1). The boundaries of the medieval townships of Dunnington and Grimston are recorded on the 1st ed. 6inch OS map, sheet 174 (surveyed 1846-51) and sheet 175 (surveyed 1848-50).

The work has also suggested the site of the lost township of *Ianulfestorpe* within the project area. The township disappeared shortly after the Domesday survey, which is the only time it is recorded (Fig. 1). A fourth and un-named township has been identified next to *Stamford Bridge West* extending beneath the layout of *Scoreby* township. If correct, a date of abandonment by the 10th century could be suggested for this vill.

Historic townships were essentially territorial units which allowed their farming communities to exploit the full range of farming resources. They also acted as the unit of taxation, administration and the building blocks of other medieval units such as the parish, manor, monastic and ecclesiastical estates.

Dunnington township

Documentary evidence

The complex history of landholding in Dunnington from the Norman Conquest is briefly summarised here. At Domesday there were two manors in Dunnington, and *Ianulfestorpe* has an entry as a separate township.

Landholding throughout the medieval period was rarely straightforward, and its effect on the layout of the landscape varied. This was certainly the case in the townships of Dunnington, *Ianulfestorpe* and Grimston. The acquisition of land in Dunnington by York Minster was a major factor and led to the destruction of the physical landscape of the township of *Ianulfestorpe*.

At the time of Domesday, York Minster's holdings in the township were the prebendary manors of Dunnington and Ampleforth. These were enlarged in 1225 when the Percy holdings in Dunnington and Grimston were extinguished when all Percy rights were granted outright to the Minster. The York Minster holdings of its prebends are recorded in a series of extremely detailed extents, dated about 1295.

Apart from a series of interesting customary services to be performed by the tenants, the Dunnington portion of the extent records a number of important details about the size of settlement at the time. In the Dunnington prebend manor there were 27 tenants holding 30 tofts (enclosure in which tenant's house and associated buildings lay) and 21 tenants with bovate holdings (one eighth of a carucate, about 15 acres). It is likely, though not certain, that there would be habitable holdings attached to each of the bovate holdings. Another of the Minster's estates, centred on Ampleforth, held lands in the township as a separate manor. Seven bondmen are described as having bovate holdings.

These two groups of holdings suggest a substantial settlement in the late 13th century, nucleated in village form. There were 30 tofts, and, if each bovate holding had a toft attached tenurially, there would be a maximum of 58 house sites belonging to York Minster in Dunnington.

The extent also records other features of the manor, either because the tenants had

rights in those areas, or because the buildings provided an income. The bondmen (tenants who were tenurially tied to their landlord) held 12 acres of arable. There were 20 acres of meadow, about 6 acres of wood and 30 acres of moor. A windmill is recorded as rendering 2 marks; probably the one whose site is shown on the 1st ed. 6inch OS map to the east of Church Balk (Fig. 8), which gave its name to the medieval common arable field of Mill Field (Fig. 4). The lord's barn is also mentioned but it is unclear whether this was within the manorial farm enclosure attached to the manor house, or whether it was the tithe barn. In addition to the tenants mentioned above, the part of Dunnington township that belonged to the Ampleforth prebendary contained a manor house.

Later evidence suggests that the population of Dunnington township continued to grow during the medieval period. The 1377 Poll Tax returns list 127 tax payers over the age of 14 in Dunnington (Purdy 1976). Interpreting the number of households from such figures is difficult because of the exemptions, evasions and the difficulty of knowing the numbers of people per household. The headings in Poll Tax returns are equally difficult to understand, as they often cover a number of adjacent townships under one heading. However, in later years there appears to have been a substantial increase in population from that indicated by the late 13th century Minster extent. The 1672 hearth tax returns are clearer, for they list houses with hearths; 74 were recorded in Dunnington.

The early route from York to Norton (Fig. 3) and the underlying field system suggest that there may have been settlement in the Dunnington area from prehistoric times. The field system alone suggests continuity of farming use from that period. The continuity is reflected in the name of Dunnington itself. The last element of the name comes from Old

English *-ingtūn*, of probable Anglian origin. It traditionally meant a settlement or farm attached to the person named in

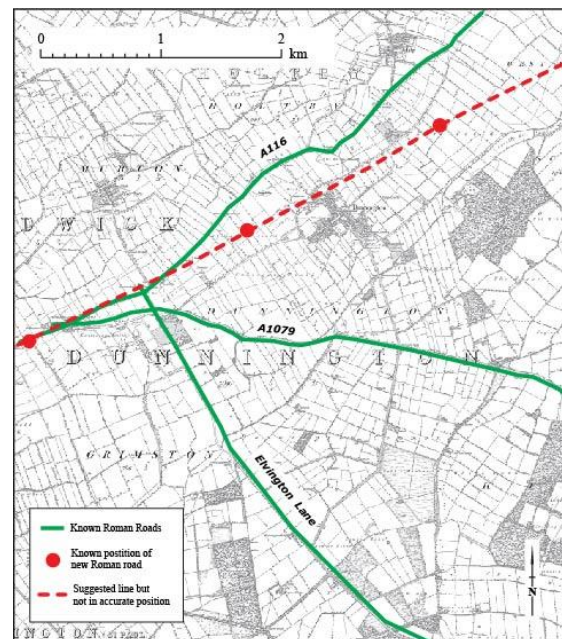


Fig. 3 Remnants of the co-axial field system and four Roman roads converging east of the Grimston Bar roundabout, based on the 1st ed. 6inch OS map, surveyed 1848-50

the first element, but it has been shown that many of the names refer to topographical features (Arngart 1972; Fellows-Jensen 1974). The first element is unlikely to be Old English *dūn*, 'hill' on topographical grounds, and much more likely to be Old English *dune*, 'down, below, lower', in this sense denoting a place below the Roman road, the present A166 (Fig. 3). There may be uncertainty about the meaning but the name does suggest settlement in the Anglian period.

Recent work in the south of England and Midlands has identified a planned feature of post-Roman settlement, and that is grid planning (Blair, Rippon and Smart 2020). Dunnington has been suggested as such a village and adjacent field system (Blair, Rippon and Smart 2020, pp. 56-57, Table 3.1, 78 fig. 3.13, 309). The identification is based on aerial photographs and LIDAR alone. This is in complete contradiction to

the results of this long-term project, outlined here, which has allowed the understanding to come from the results of the multi-disciplinary work. The village of Dunnington is inserted into an extensive earlier co-axial field system, which lies to the east of York. The assumed grid planning at Dunnington is one of a number suggested across Yorkshire, which are also suspect, and unlikely (Blair, Rippon and Smart 2020, p. 78). The Dunnington attribution, and probably other suggested Yorkshire examples, highlights the problems of applying strategies from other parts of the country, without using the evidence from the local landscape, and the work of the landscape historian rather than archaeology.

The field system

Origin of the field system

Little is known of the prehistoric and Roman landscape between York and the River Derwent, apart from a few archaeological finds. The field survey in Hagg Wood (Moorhouse 2007, pp. 20-2) identified a pre-medieval earthwork landscape: part of a settlement set within a series of shallow parallel linear banks and ditches, called co-axial fields, which are aligned north-west to south-east. This alignment of fields extended well beyond the wood, evidenced by soil and crop marks seen on aerial photographs. The same alignment exists in all the open fields of Dunnington, with the exception of The Intakes, and parts of the Grimston field system. This alignment is extensive, following through into townships north of the York moraine, such as Murton and Holtby (Fig. 4). Similar extensive co-axial field systems, attributed to the prehistoric/Romano-British period, are recognised in blocks across Yorkshire.

Historic sources

There is very little documentary evidence for the layout of the field system of Dunnington. The two Enclosures in 1709

(of the open fields) and 1772 (of the common) were cases brought before the Court of Chancery, where the all-important maps were never produced (Beresford 1979; Hollowell 2000, pp. 3, 5-7). This form of judgement was an alternative to the more common Parliamentary Enclosure Acts and Awards. However, an appreciation of how medieval field systems were managed, and the more than usual detail of the system recorded on the 1st ed. 6inch OS map, sheet 175, allows the layout and internal routeways of the Dunnington system to be understood, providing a firm basis for understanding the botany in surviving field and routeway hedges.

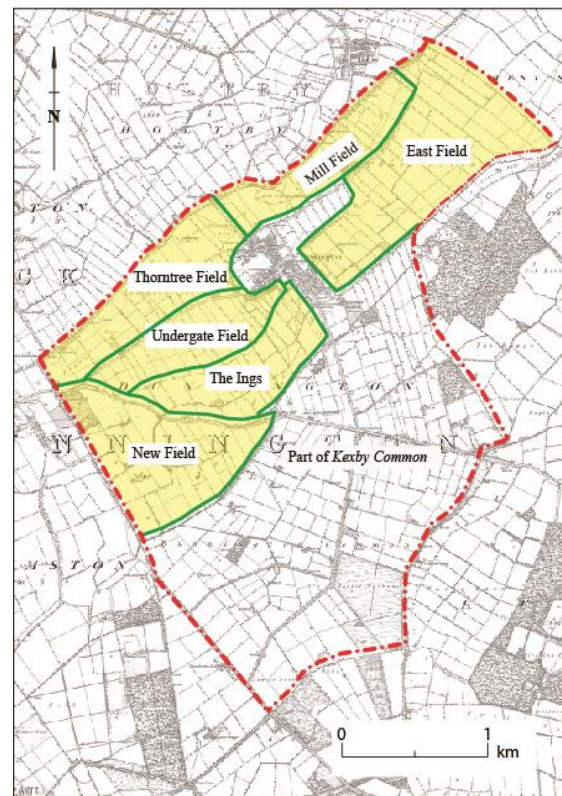


Fig. 4 Six post-1225 medieval open fields of Dunnington township after the fields of Ianulfestorpe were consumed

Initially there were probably four arable fields in Dunnington (Fig. 4): Mill Field, East Field, Thorntree Field, Undergate Field, together with The Ings or common meadows. From the original creation of the township territory the farming

landscape was worked communally, with a tenant holding the full range of farming resources, scattered throughout the landscape amongst the lands of their fellow tenants. Access to their various parcels of land such as arable, meadow, woodland and common waste was important and thus an extensive network of routes was developed at each stage of the progression of the landscape.

New Field became the fifth field (Fig. 4), when the abandoned Domesday township of *Ianulfestorpe* was absorbed within Dunnington township, after 1225 when the united fields of the prebend manor of Dunnington were re-organised. The existing roads which divide the fields are clearly contemporary with the fields, providing access between and within them, and with the settlement at Dunnington.

The location of *Ianulfestorpe*, the lost Domesday vill, lay between Dunnington village and the Grimston boundary (Fig.1). It appears that the entire field system of the lost vill was completely absorbed by the expansion of the Dunnington field system. It is believed that this occurred when York Minster acquired the prebend manor piecemeal by 1225, and that any documentary evidence for this may survive amongst the archives of the Dean and Chapter. If this is the case, then the field system on the 1st ed. 6inch OS map, west of the village, may overlie a succession of field systems, all aligned on the extensive prehistoric co-axial plan that prevails across the region. As such the Dunnington township fields could have gone through many changes, but were created within a system that has an origin in the prehistoric period.

The name and position of one other field suggests that it was a late medieval addition. The Intakes is bounded on the north by Intake Lane and on the south by Hagg Lane, originally a medieval track between Hagg Wood in *Scoreby* township and the shared common pasture (Fig. 5).

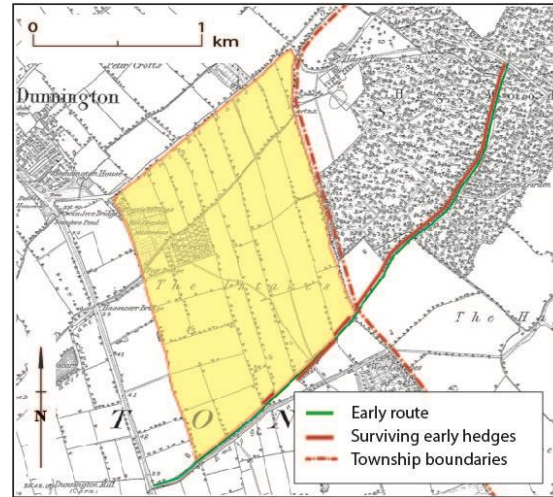


Fig. 5 The Intakes, a late-medieval addition to the open arable fields of Dunnington township, showing the former route (green) from Stamford Bridge West to Kexby Common, with surviving historic hedges either side of the route (red)

Reverse ‘S’-shaped boundaries of the enclosed plough strips are still evident on the 1st ed. 6inch OS map. The open fields, ings and intake were enclosed in 1709.

The remainder of the township to the south, Dunnington Common, was part of *Kexby Common* until it was enclosed in 1772. Both enclosures produced the pattern of field boundaries that form the basis of what survives today and provide the earliest dates for the range of species found within the hedges.

Boundaries

The prehistoric and Romano-British field boundaries were probably hedged. The post-Roman township fields of Grimston, *Ianulfestorpe*, Dunnington and the unnamed and un-documented township would have been hedged by the inhabitants of the individual townships, and hence have their own histories. This is one of many reasons why the historic township boundaries must be identified. The post-1225 Dunnington arable field and meadow boundaries would be hedged, though earlier existing hedges would have been absorbed into this pattern where appropriate. The new hedged boundary

would be created around The Intakes when the field was formed, during the late medieval period. This meant that the hedged boundary of the northern side of the field, the southern side of Intake Lane, was much more recent than the hedge on the other side of Intake Lane, which bordered the ancient East Field. This is reflected in the botanical evidence.

Roads and hedges

The field routes and their hedged boundaries formed an important element of the open field system. The northern boundaries of Thorntree Field, Mill Field and East Field, which formed the northern township boundary of Dunnington, lie against the Roman road from York to Stamford Bridge, along the top of the York moraine (Fig. 4).

The western end of Thorntree Field is formed by the lane called Bore Tree Baulk, probably the original extension of Elvington Lane and possibly Roman in origin (Fig 4). The township boundary between Dunnington and Murton lies for most of its length on the northern side of the Stamford Bridge road, along Thorntree Field, but near Holtby Manor it crosses to the southern side of the road (Fig. 22). From there, the southern part of the road forms the township boundary of Mill Field and East Field. That is, the township boundary line crossed the road. This led to the initial suggestion that it may be the boundary of the lost Domesday vill of *Ianulfestorpe*.

York Road, formerly Dunnington Lane, was the principal route to York; the hedged field route provided access from the village to the fields. It is this route that gave its name to the large common arable field of Undergate Field lying adjacent to the south (Fig. 9). Similarly, Eastfield Lane was a hedged field route. Petercroft Lane originally gave access to the crofts between the lane and Eastfield Lane, discussed below.

A field route formerly ran between the southern side of Undergate Field and The Ings. Only parts of the hedge are shown on the 1st ed. 6inch OS map, on alternate sides of the lane. The field name 'Undergate Field' means 'field under or below the road', in this case York Road. 'Gate' and 'lane' elements mean routes between boundaries. These boundaries would be hedges.

A route ran on the southern side of The Ings and the New Field, with its southern side open to the common. This is part of the early route which pre-dated the field system (Figs 5, 6). This early route ran along the southern side of East Field. The western sides of Thorntree Field, Undergate Field and The Ings butt on to the early route of the Hull road, which is a Roman road. These were the routes associated with the core of the post-1225 Dunnington field system.

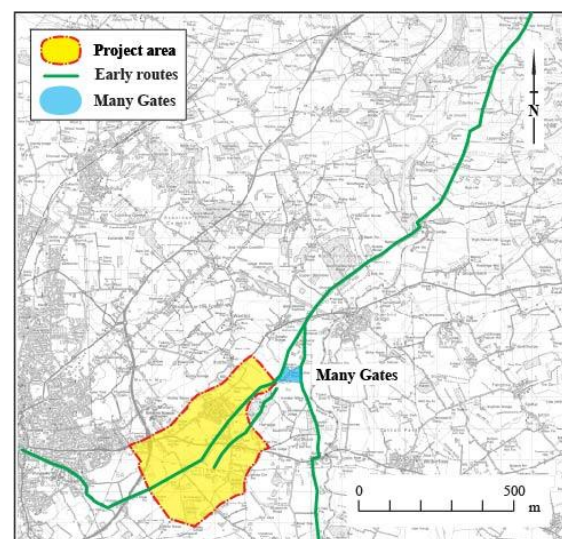


Fig. 6 Early routes which pre-date the fields system, centred on Many Gates

A route originally running from the deserted medieval village and township of *Scoreby* towards the common formed the boundary of the southern side of The Intakes and the south-eastern boundary of the medieval rabbit warren (Figs 5, 12).

Where roads crossed the common in the medieval period they would not be hedged. Marker trees may have been used as a guide to travelers, to show them roughly in which direction to head. Such an example occurred on the early route from Dunnington Common into Hagg Wood, where it crossed the *Scoreby* boundary.

While the documentary evidence is essential for recreating the framework of the historic landscape, the botanical evidence can add unique information to the overall picture. Some of the results have been highlighted throughout this booklet. One result worth noting is the concentration of English Elm intermittently along the line of both Elvington Lane and Hull Road and along the medieval township boundaries. Both the routes and township boundaries are relatively ancient creations. English Elm is linked with them and thus it may be regarded as a significant species, marking out ancient boundaries. The early date of the roads was confirmed by the recognition of English Elm.

Dunnington village

The village of Dunnington overlies the co-axial field system, which it completely disregarded, around an early manorial/monastic enclosure, a plan which is embodied within the present village development. The earliest map of Dunnington village is the plan shown on the sheet of Jeffreys' map of Yorkshire surveyed in late 1769 (Fig. 7). The present-day village contains a structure of roads that reflects the original core of the settlement. A plan of the early village from Jeffreys' map can be seen superimposed onto the 1st ed. 6inch OS map (Fig.8).

The core of the early village is a probably pre-Conquest manorial enclosure, defined by Church Lane, York Street and Church Street (Fig. 9). The church lies within this, against its northern boundary. The 1st ed. 6inch OS map shows the manor complex

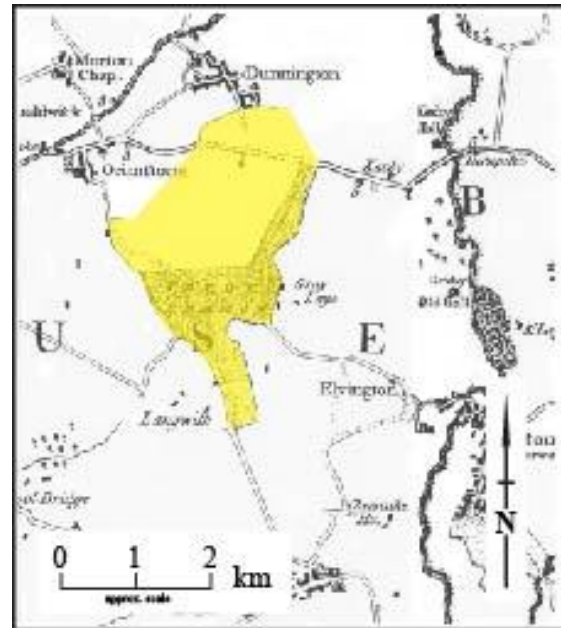


Fig. 7 The villages of Grimston and Dunnington shown on sheet 13 of Jeffreys' map of Yorkshire, surveyed in 1769, with the extended area of Kexby Common highlighted

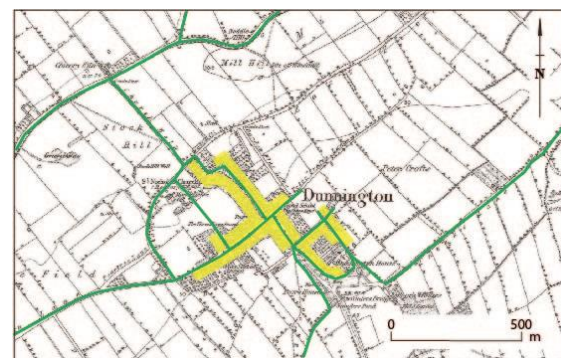


Fig. 8 Details of Dunnington village on Jeffreys's map (Fig. 7) superimposed on 1st ed 6inch OS map, sheet 175, surveyed 1848-50

to the west of the church set within a large curvilinear enclosure at the junction of four adjacent arable fields. The area is significantly tithe free in the 1838 Tithe Award (Fig. 9). Tithe exemption is usually associated with the early foundation of monastic houses, particularly of the Cistercian order and its use was limited by a decision of the Lateran Council in 1215. Thus, a block of tithe-free property in monastic or ecclesiastical possession is likely, though not certain, to have been

granted before 1215. All this suggests a large central manorial enclosure, which was probably there long before 1225. The position of the parish church against the northern boundary suggests that it may have started life as a manorial chapel in the pre-Conquest period. Unfortunately, the area has been built over and any botanical and archaeological evidence within this important *curia* has been destroyed.

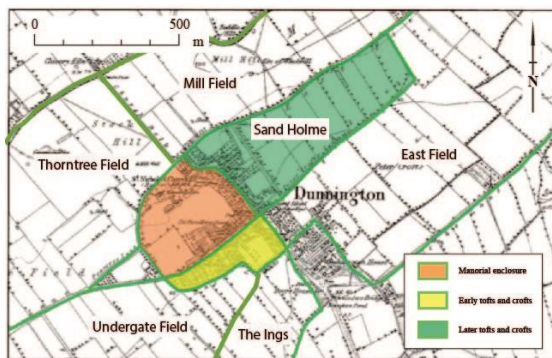


Fig. 9 Development of early Dunnington village superimposed on 1st ed 6inch OS map

A row of tofts and crofts lie south of York Street, bounded on the south by the significantly called Back Lane on the 1st ed. 6inch OS map (Fig. 9). The route of Back Lane has survived, now called Owlwood Lane and Greencroft Lane, the latter extending further south. This could suggest a number of things: the eastern group of tenements has been extended; a secondary group of longer tofts and crofts has been added; or a single large tenement has been added. Although there is no known documentary evidence, this last suggestion would not be surprising, as monastic holdings in nucleated settlements can develop into large courtyard arrangements. The 1st ed. 6inch OS map suggests that the layout of these tenements extended over the eastern end of Undergate Field. It is argued that the open fields between the village and the Grimston boundary were probably laid out after the final acquisition of the Percy holdings in 1225, when the landscape of the former Domesday vill of *Ianulfestorpe*

was absorbed. If this is the case, the creation, or expansion of these tenements over Undergate Field occurred about 1225.

Petercroft Lane formed the southern side of one large long enclosure, matched on the northern side by the route known, from west to east, as Stock Hill Lane and the beginning of East Field Lane on the 1st ed. 6inch OS map.

Jeffreys' map shows an arrangement of houses around Water Lane (Figs 7, 8). The antiquity of these is uncertain. They appear to border the eastern side of the funnel access to the common. Jeffreys' map also shows development down either side of Church Street, but again the antiquity is not known.

Documentary and cartographic evidence for the development of the village is at present meagre. It is clear that the present village retains the core of an historic settlement that could go back to the original layout of the open fields which surround it, with an extension to the east represented by the enclosure between Eastfield Lane and Petercroft Lane.

Petercroft Lane

The name evidence is crucial. 'Peter Crofts' is given to a block of fields on the 1st ed. 6inch OS map (Fig. 9) within the East Field and adjoining the south of Petercroft Lane. The name 'Peter' almost certainly comes from York Minster, which was dedicated to St Peter. The Minster held a substantial manor, or prebend, which supported the canons of York Minster, in the township from the pre-Conquest period. The name 'Sand Holme' is given to the area defined by Eastfield Lane and Petercroft Lane, on the 1839 Tithe Award map. The last element is Old Norse, and refers to a water meadow, but this may not be relevant here.

This rectangular area (Sand Holme) to the east of the village existed before the main arable field system (Fig. 9). If the land between the two lanes had been

enclosed from the East Field, then the boundaries within it would have respected the alignment of the former plough lands. However, the line of the boundaries is not only on a different alignment to the strips in the fields but the internal divisions are shallow reverse 'S'. It seems likely therefore that the East Field was laid out either with or around the enclosures north of Petercroft Lane. This group of tofts and crofts between Eastfield Lane and Petercroft Lane thus form some of the earliest enclosures in the township. Further work is needed to understand this important area of the settlement.



Fig. 10 Aerial photograph of Petercroft Lane, showing former ridge and furrow cultivation strips (selions)

The ground within these former divisions is covered with broad ridge and furrow running parallel with the removed north-south boundaries (Fig. 10). The northern parts of a number of these former divisions have a shallow, broad terraced platform, adjacent to Eastfield Lane, covered by ridge and furrow. It is likely that these were the sites of timber buildings (possibly barn sites), on the back of the tenements. From the layout of the field system to the end of open-field farming, Petercroft Lane was clearly a field access route from the village to both the Mill Field and the East Field. The lane was clearly important in the early morphology of the township.



Fig. 11 The author standing next to the 1.5m high bank along the footpath from Eastfield Lane to Petercroft Lane looking south, seen on Fig. 10

Petercroft Lane formed the front of this block of crofts. The eastern boundary is defined by a broad spread bank about 1.5m high (Fig. 11). However, when the crofts went out of use they were ploughed over, destroying both the headland and the bank on the southern side. This area of Petercroft Lane was moved northwards (Fig. 9). The continued use of the lane as a footpath and the disturbance of fields to the south have destroyed any evidence of the earlier ploughing.

The layout of the enclosures defined by Petercroft Lane and Eastfield Lane suggest a former early block of tenements, or tofts and crofts. However, the term 'croft' in the name suggests grazing enclosures rather than a toft and croft arrangement. The usual term found for abandoned tenements is Old Norse 'garth'. At the moment the evidence suggests that the 'Sand Holme' enclosures were crofts physically detached from, though tenurially attached to, the tofts and crofts within the village, and that the earthwork platforms at the northern end of each original enclosure were barns.

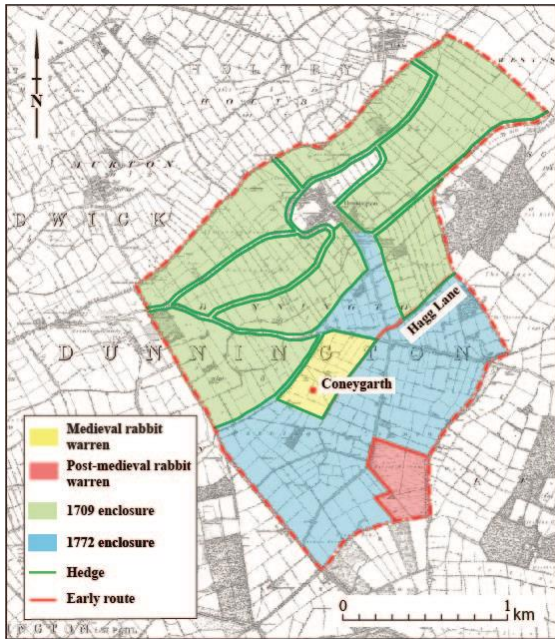


Fig. 12 Enclosure of medieval field system and common of Dunnington township, the arable fields in 1709 and the common in 1772

Rabbit warrens on the common

Two rabbit warrens were created on the common (Fig. 12). No documentary evidence has been found for the earlier northern one, which is probably medieval, but the chronology of the field system shows that they both pre-date the enclosure of the common in 1772. The surviving name Coneygarth Lane is shown on the 1st ed. 6inch OS map, a name which means ‘the coney, or rabbit enclosure’. None of the fields within this enclosure is given the name in the Tithe Award of 1838. Coneygarth contains Middle English *coni*, *coning*, ‘rabbit’ and Old Norse *garðr*, ‘enclosure’, meaning a rabbit warren. The term ‘coney’ is usually given to medieval rabbit warrens, while the term ‘warren’ is given to those of post-medieval date. On the modern map the adjoining farm is called Coneygarth, preserving the tradition of a medieval rabbit warren (Fig.12).

The second warren adjoins the south-eastern township boundary, adjacent to the track called Kexby Stray. The warren is referred to a number of times during the 17th century. All four fields shown in the

Tithe Award within the enclosure have ‘warren’ in their name. A number of boundaries have disappeared on the 1st ed. 6inch OS map, a decade after the Tithe Award map was surveyed.

Grimston township

The village of Dunnington and its surrounding field system survive. Neither survive for Grimston, the only physical evidence for their existence being earthworks. However, unlike Dunnington, a wealth of documentary evidence survives, along with estate maps, which allow the layout and history of the village and its fields to be understood.

Documentary evidence

A considerable documentary archive survives, particularly in the extensive Lane-Fox family collection in Leeds District Archives. Of particular importance is an extremely detailed survey of 1606 and a detailed memorandum, book of the early 17th century. This last source reveals much about the former village, invaluable evidence for the contemporary landscape, and incredible detail about the construction of the new manor house (which is discussed below). Two undated early estate maps survive, the earliest is just before 1706-07 (Fig. 13) and the second was surveyed between 1731 and 1762 (Fig. 14). The 1st ed. 6inch OS, sheet 174, surveyed in 1848-50, shows a number of changes in boundaries over the village area (Fig. 15). The absence of a Tithe Award is compensated for by a sale map of 1855 (Fig. 16), which adds names, some of which have changed from the earlier maps. The superimposition of the remains of the village and its hinterlands shown on the map of just before 1706-07 onto a modern OS map (Fig. 17) shows the final demise of the village and its hinterland. Successive overlapping layers of the historic landscape can be seen as shallow earthworks within the areas of grassland over and around the village site (Fig. 17)

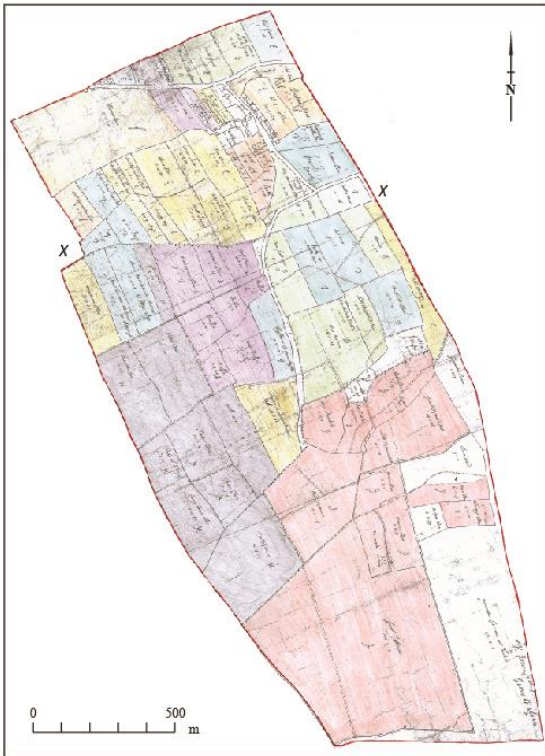


Fig. 13 Map of Grimston township, created just before 1706-07, based on WYL72/CXVII24

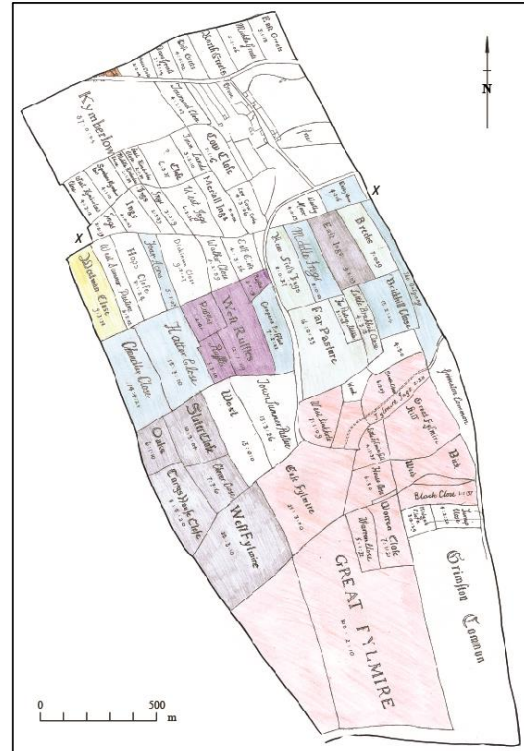


Fig. 14 Map of Grimston township, created during the period 1731-62, based on WYL72/XXX12

and on the aerial photograph (Fig. 18).

As we have seen for Dunnington, determining population during the medieval and early modern period is difficult. The first record of 1377 is the earliest of the three great Poll Taxes, listing adult individuals (with exclusions) in the township: 41 tax payers were listed living within Grimston township. The next is the 1606 survey which records twenty-three tenements in the three rows of the former village. Finally, in the 1672 Hearth Tax returns, listing houses with hearths, fourteen households were included in the assessment. All of these documents list information in a very different way and cannot be directly compared. However, They all give some indication of the numbers of people living within the township.

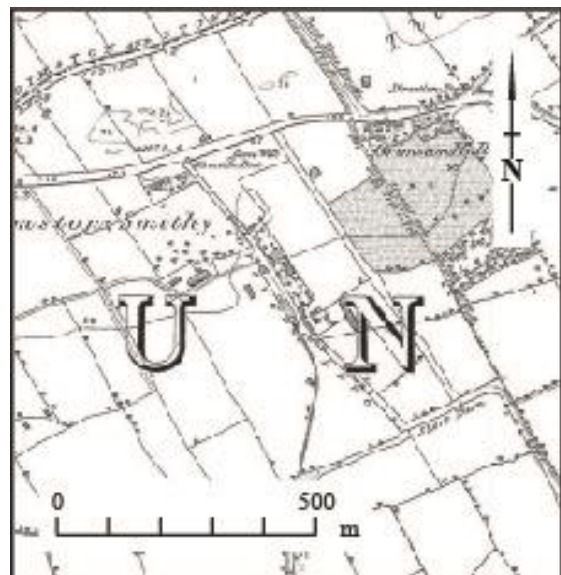


Fig. 15 Detail of Grimston village from the 1st ed 6inch OS map, surveyed 1846-51

It might be assumed that the wealth of documentary evidence places Grimston at

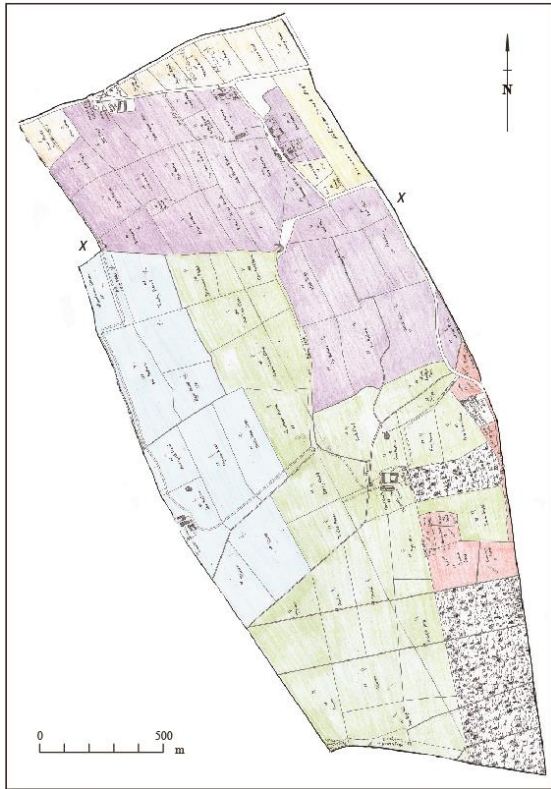


Fig. 16 Sale map of Grimston township, dated 1855. Tracing based on WYL72/LVII2



Fig. 17 Boundaries of Grimston village shown on map of just before 1706-07 superimposed on modern OS map. Areas of undisturbed grassland, containing shallow earthworks, is shown in green, the remainder is ploughed

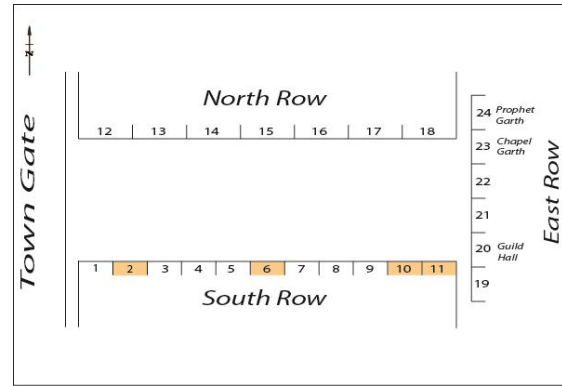


Fig. 18 Diagrammatic reconstruction of former three-row village of Grimston, described in the 1606 township survey. Four tenements in the South Row (coloured) were described as 'closes', and hence not then lived in

an advantage to neighbouring Dunnington in understanding its historic landscape. However, much of the remains of the northern part of the township including the medieval settlement, closes and the manor complex, has been destroyed by the modern road network. Comparing the map of just before 1706-07 (Fig.13) with the modern map of the area (Fig. 17), many of the field boundaries have been removed, though some still exist as earthwork features. It is unfortunate that these hedges have not survived, for the boundaries of tofts and crofts and their adjacent closes would have been the earliest hedges in the modern landscape, and their botany could have helped in deciding the chronology of the settlement.

The name of the township may help understand its early history. The traditional view of the meaning identified the first element with the Scandinavian personal name *Grímr*. However recent interpretations suggest that the first element refers to the pagan god *Woden*, very often using his by-name *Grim*. Such names are often associated with linear earthworks, and archaeological sites of prehistoric and possibly Roman date (Fellows-Jensen 1972; Gelling 1978; Faull 1978-79).

This may be significant in the light of Roman activity in the area. Despite the proximity of the important Roman military and civilian settlement in York, very few archaeological finds of Roman or earlier date have been made in Grimston. The Roman road from York to Malton via Stamford Bridge is well known along the top of the moraine. The project has suggested three further roads which are probably Roman in origin: Elvington Lane, the Hull road, and a new recently identified one (Fig. 3). All three roads meet to the east of Grimston Bar Roundabout, suggesting Roman activity which has yet to be recognised archaeologically.

However, two Roman altars, now housed in the Yorkshire Museum, were found during the 19th century on 'Dunnington Common' (Clark 1935, p. 79 and references)). Their precise location is not known, but one was said to be 'found on the south side of Dunnington Common ½ mile from Grimston Toll Bar'. An account of 1855 only mentions one altar, the larger of the two, with an axe and knife in relief, found 'some years before' 1855 (Proctor 1855). He describes in some detail the spot, but without giving any local names. It was found while digging a marl pit. The implication is that this was in the southern part of Dunnington Common, The 1st ed. 6inch OS map surveyed in 1848-50 (roughly the date when the altars were found), shows 13 marl pits within this area, and, despite the other detail in the 1855 account, it is not certain which one is being referred to.

Field system

An understanding of the field system from the map evidence and field names, supported by the surviving earthworks, provides an outline for the history of the township landscape. It is clear that there are two settlements, one on top of the other, with expansion of the field system

southwards associated with the three-row village.

The earliest landscape is identified by an east-west head dyke (Figs 13, X-X; 14, X-X). This defines the area of settlement and farming landscape to the north from the open grazing to the south (the common). North of the head dyke to the township boundary would contain the settlement (of unknown form beneath the three-row village) and the full range of farming resources which are reflected in the range of field-names within this area. A clue to the early settlement is seen in the early funnel (Fig. 20, blue) which would have given direct access from the settlement onto the grazing land to the south, that later was occupied by the two large open fields of the township.

The 1606 survey of the township records the two open arable fields as *New Field*, containing 71 acres, and *Low Field*, containing 60 acres. By analysing the survey, the structure of the two fields can be understood, while their extent can be identified from the 1706-07 map as lying either side of the former *Outgang*, which led from the three-row village to the common grazing on Till Mire beyond the fields (Fig. 13). The hedges surrounding these common fields would be the earliest hedges. Their interiors were enclosed by private agreement. The 1606 survey shows that the two open common fields were still in use. These had been enclosed just before the map of 1706-07 was created (Fig. 13). Their internal hedges would date from this period. Most of these hedged boundaries that survived until the 19th century are no longer there.

Closes (small enclosed hedged fields) lie to the south east of the village site. Five fields lie south of these, with the name *Ruffles* in them. These are almost certainly assarts and may date to the period immediately after the deforestation of the Forest of Ouse and Derwent in 1234. A

further group of discrete fields lie adjacent, defined on the east by a lane shown on the 1st ed 6inch OS map as ‘Green Lane or Butterfield Lane’, the *Outgang* of the 1606 survey. Between the lane and the township boundary with Dunnington lay a group of fields which contain the words meadows or ings. The remainder of the township to the south is covered with fields called Till Mire, the name of the common grazing area from which the arable fields were won. A funnel from the marsh is clearly visible at the end of the former Butterfield Lane (Fig. 13).

Typical of many townships, rabbit warrens were created on the commons. The Grimston warren is mentioned in the early 17th century, when it is stated that ‘the *conyes* of the moor’ would not do well ‘for it is wet sand and very subject to rot and they do not lie dry’ (WYL72/LXXII49). In 1656, a new intake of 39 acres is described, and a year later thirteen acres were ploughed up. The warren is shown on the maps of shortly before 1706-07 (Fig 13) and 1731-64 (Fig. 14), but was not shown on the 1st ed. 6inch OS map. The combined warren closes shown on both maps add up to 12 acres 3 roods 13 perches, suggesting that the area of the warren had been reduced before the early 18th century. Surviving hedges may not, therefore, reflect the date when the warren was originally created from the common.

Major differences in the arrangement of the farming landscape and field system of the two adjacent townships of Grimston and Dunnington have been noted, despite them lying on the same slope of the moraine with similar geology. A clue to the differences may be given in the early-17th century memorandum book (WYL72/LXXII49). A case concerning the grazing of tenant’s animals from the townships of Dunnington and Grimston concludes that ‘Dunnington Common is a good sheep pasture and Grimston

Common is so rotten ground that no man dare keep sheep there’ (WYL72/LXXII49). It also states that Grimston tenants ‘anciently needed to enclose common for their own uses when they thought fit’. Despite successive drainage works and flood defences over the previous centuries, the common within Grimston remained marshy and damp until at least the 17th century.

Part of the field system can be shown to date to after the demise of the village in the early 17th century. Some of this can be seen on aerial photographs (Fig. 19). Fieldwork has shown that north-south ridge and furrow overlies the rear of the *East Row* crofts



Fig. 19 Aerial photograph of earthworks of former village of Grimston to the east of Grimston Bar roundabout, mostly covered with ridge and furrow. Taken 6.1.96. NMR 12618/24 @Crown Copyright

Dunnington Common must have been drained earlier as it produced a far superior grazing crop to that of Grimston. This affected the way that Grimston tenants ordered their farming landscape, differences which not only affected the use and hence the physical appearance of each common, but also of the farming landscape between the settlement and common. Early land holding may also have had an important part to play in the different use of landscapes within each township.

Field-names

The wealth of field names on the two

Grimston maps (Figs 13, 14), many of which are no longer in use, help understand the layout of the township and its development. The sale map of 1855 shows how some of these names have changed as field boundaries changed (Fig. 16).

The value of historic field-names is illustrated by a series of fields shown on the map shortly before 1706-07, adjacent to the northern township boundary, and now under the Grimston Bar roundabout, which are called 'Greets' (Fig.13). The name comes from Old English *grēot*, 'gravel', or Old Norse *grjót*, 'gravel, stones, rock', and almost certainly refers to early quarries for gravel, as the fields lay on the top of the moraine, which is capped by sand and gravel (Fig. 2).

Analysis of the wealth of field-names in the township is ongoing.

Medieval road system

Open-ended medieval village greens have a particular road system around them. The open end usually lies at right angles to a major road, with the manor complex at the head of the green, at the opposite end (Fig. 20). A back lane can lie along the rear of one or all rows of the village, providing access from the tenements to the fields, and creating a route around the village. There was also a route around the village green.

The map of shortly before 1706-07 shows the abandoned medieval village in an advanced state of decline (Fig. 13), but sufficient survived to suggest the earlier route system. The 1606 survey contains details of a number of routes in and around the village, as do parts of the early 17th century memorandum book. The western open end of the green lay along the eastern boundary of *Townend Close*, *Cow Close* and *Low Cow Close*. The northern part of

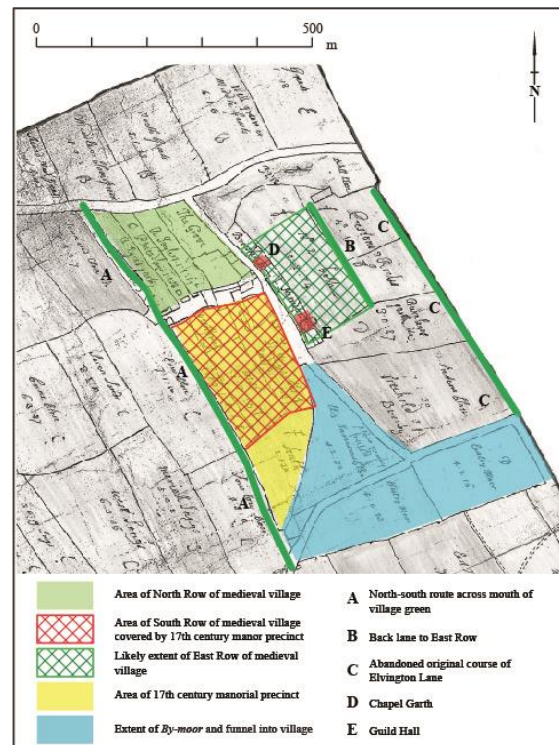


Fig. 20 Reconstruction of three-row village of Grimston, based on map surveyed between 1731 and 1762, the 1606 survey and fieldwork

this route appears to survive on the 1706-07 map as a narrow field adjoining *Townend Close*, significantly named *Town Lane* (Figs 13; 20, A). It runs from the Hull road on the north and terminates on the remains of the green on the south. The northern part of the back lane of the *East Row* is covered with well-preserved ridge and furrow (Fig. 19). These are discussed in detail in the forthcoming book.

The northern part of the present Elvington Lane was clearly in its present position by the early 18th century, as it is shown on the map of just before 1706-07 (Fig. 13). It probably formed the western frontage of the *East Row*. It is clear that by the early 18th century the route formed an access way from the village to the common at the southern end of the township. In keeping with many access ways elsewhere, connecting settlement and common, it was known as *The Outgang*.

Grimston village

Grimston was a green three-row village, the *North*, *South* and *East Rows* (Fig. 18) overlay the co-axial field system of prehistoric date. Parts of the historically documented village of Grimston survives as earthworks. The date when the village was destroyed, and the process by which this occurred, is described in vivid detail in the early-17th century memorandum book (WYL72/LXXII49). Notes are made on the removal of the houses of named tenants when they died. There is a description of what appears to be the re-alignment of the northern part of Elvington Lane to its present dog-leg position adjacent to Manor Farm. This new line seems to run up the eastern side of the green and along the front of the properties in the *East Row*. The notes suggest that the demise of the village, and the re-ordering of its landscape, did not occur all at once but over an unspecified, but perhaps short, period of time.

The most instructive document for reconstructing the three-row village layout is the survey dated 1st February 1606 (WYL72/LXXXIII1), whose title shows that a map was produced to accompany it, but this has not survived. The 1606 survey showed that the *North Row* contained seven tenements, the *South Row* eleven tenements, and the *East Row* six tenements (Fig. 18). Most of these had principal buildings in them, called variously messuage, cottage or house, reflecting their tenurial status. Four appear to be devoid of a habitable building, as they are called ‘closes’, and were presumably used for grazing in the early 17th century (Fig. 18, nos 2, 6, 10, 11). This village plan, however, did not survive to be shown on the map of shortly before 1706-07 (Fig. 13). In fact, most of the village had been abandoned by then.

This map of just before 1706-07 gives details relating to the present landscape, along with field-names for the village area.

Remnants of the *North Row*, at least two and possibly three tenements, are still there along with the green frontage. The *South Row* is barely discernible, with only a few north-south tenement boundaries surviving. This map also shows that the new early-17th century manorial complex was laid out over the *South Row* of the former village and some of the tenement boundaries may have been used in the precinct plan. The boundaries of the *East Row* tenements had disappeared by the time the map of just before 1706-07.

The outer perimeter of the former village can be suggested. The western boundary of the *North* and *South Rows* appears to be defined by the significantly named *Town Lane*, and a field called *Townend Close* adjoins the lane to the west. The close is named on both maps (Figs 13, 14). Such names are often found adjacent to the edges of medieval settlement and are helpful in defining settlement boundaries.

The northern boundary of the former village is Hull Road. The village continued southward as the eastern boundary of *Cow Close* and *Low Cow Close* to join a footpath that still survives without its former boundaries, called ‘Green Lane or Butterfield Lane’. This is the *Outgang* that divides the two large open arable fields of *New Field* and *Low Field* (Figs 13, 14). The eastern boundary also survives as a back lane, known as The Belt, surviving as a slight hollowed way with trees lining both sides which ran down the back of the former *East Row* (Fig. 17). The southern side of the settlement is more problematic as it was engulfed by the laying out of the hall precinct of the early-17th century manor complex. It is possible that it lay beyond the area of grassland, within the extensive ploughed field to the south. No earthworks are visible now but they may be revealed as soil or cropmarks.

Earthworks of this three-row village

survive in grass fields around Hill Farm and Manor Farm, and particularly to the west of Elvington Lane around Manor Bungalow (Fig. 17). The best-preserved part is the *North Row*, where much of what is shown on the maps of shortly before 1706-07 and of the period 1731-62 is visible, and there are building platforms on the northern frontage of the green. A short hollow way survives in the grassland but most of the land has been ploughed up.

The frontage of the *East Row* has been built over by the farms and associated buildings of Hill Farm and Manor Farm. However, the banks of the disturbed crofts survive behind the farms. The northern extent of the toft and crofts is uncertain as they are built over but the crofts are covered by well pronounced wide ridge and furrow, defined by The Belt (Fig. 17), the northern part of which has been ploughed over by the same alignment of ridge and furrow. The original back lane is respected by the same ploughing regime on the east up to the Grimston/Dunnington boundary (east of Elvington Lane). Little of this detail can be seen from the air (Fig. 19), and highlights the dangers of using aerial photographs alone, or any technique associated with it, to understand earthwork landscapes.

The Grimston-Dunnington township boundary survives as a broad causeway where the field boundary has been removed, running up the slope of the moraine north of The Plantation (Fig. 17). A footpath continues along the original line of Elvington Lane northwards to the original line of the Hull road and is continued northwards by Bore Tree Baulk. This causeway is almost certainly the agger of a Roman road (a raised stone track of a Roman road, with a cambered surface and drainage ditches on either side) (Fig. 20, C).

It is likely that the three-row planned village was not the first settlement at

Grimston. The ‘-by’ element in two field-names south of the village site (Fig. 20) suggest settlement probably in the 11th century, occupation that probably lies below the three-row village. The field system associated with this settlement probably lies north of the east-west head dike (Figs 13, X-X, 14, X-X). Field-names over this area indicate the full range of farming facilities. The size of the area of this field system indicates a small settlement. The area to the south was the common grazing, part of *Kexby Common* of the time. The field system over this area, either side of the *Outgang*, seen on the two eighteenth century estate maps (Figs 13, 14), probably dates to the creation of the three-row village. The funnel allowed access from the then common along the *Outgang* to the village, the area to the south being enclosed between 1606 and just before 1706-07 (Fig. 24). Much of this entire landscape has been mostly destroyed.

The combined evidence of fieldwork, documents and maps has allowed an outline understanding of the medieval settlements.

Manor House complex

A manorial complex comprised a series of enclosures; the house where the lord and his family lived, the area of the farm buildings and a large multi-functional horticultural area where the lord grew plants for food and pleasure, including orchards and a range of pleasure facilities. All these features were laid out to respect each other within a single large perimeter. The overall plan was dictated by local topography and the manor house complex would be expected to lie at a focal point in the settlement (Moorhouse 2011).

The manor house shown on the sheet of Jeffreys’ map surveyed in 1769 (Fig. 7) was probably the complex that was rebuilt in the early-17th century as a result of the

re-planning of the village site (Fig. 20). It is outlined in the partial memorandum book, giving remarkable details, describing the numbers of bricks and where they were made, the relationship of rooms to one another both horizontally and vertically and most unusually, important measurements of the layout of individual rooms. Such detail of 17th century houses is rarely found, except in wills. Unfortunately, the building described in these notes was burnt down in 1768. Well preserved earthworks of the buildings of this manor complex survive in the grass field around Manor Bungalow (Figs 17, 20).

While the manor house is shown on the map of just before 1706-07 (Fig. 13), the remainder of the extensive precinct appears to be abandoned. Three fields called *Hallgarth East*, *Hallgarth West* and *Hallgarth South* form part of a roughly triangular area down the west side of Elvington Lane, opposite Manor Farm, but they have no buildings within them. The 1st ed. 6inch OS map shows that the internal boundaries in the fields had been removed and instead one large, triangular field, had been created (Fig. 15). The 1855 sale map shows that this single field was then called 'Hall Pasture' (Fig.16). The precinct was laid out over the *South Row* of the medieval village.

After the fire of 1768 the manor site was moved across Elvington Lane onto the site of the present Manor Farm. The standing structures of the farm complex appear to be late 18th century, and no evidence of earlier work has so far been found.

Medieval chapel of St Helen's

During the medieval period, Grimston township lay within the ecclesiastical parish of St. Nicholas-without-Walmgate Bar. The distance from the parent parish probably explains the chapel of St Helens in Grimston during the medieval period,

allowing the parishioners in the township of Grimston a nearby place of worship. The chapel is well documented during the medieval period. It lay within *Chapel Garth*, which lay towards the northern end of the *East Row* (Fig. 18, no. 23). The adjacent end plot to the north is called *Prophet Garth*, an unusual reference to where the priest lived (Fig. 18, no. 24). A chapel is implied by the presence of a priest holding land in the township noted in Domesday Book and by references to priests during the medieval period. A visitation in 1472 recorded that the chancel was very ruinous. A sum of 3s. 4d. was left to St Helen's chapel in 1510 and the same amount was left to the chapel in 1554 'if it goes up again', implying that by then the chapel was derelict. The demise of the chapel was probably the reason why the township became part of the ecclesiastical parish of Dunnington.

3. *Ianulfestorpe*: a lost Domesday vill

Ianulfestorpe occurs both in the main text of Domesday and in the Summary or Recapitulation. Not all places mentioned in Domesday Book have been positively located. It has traditionally been assumed that *Ianulfestorpe* became part of Dunnington township; successive editors of the Domesday Book have made this assumption without any supporting evidence.

The purpose of the Domesday Book

The Domesday Book is essentially a record of the resources of the King and of his tenants in chief: in manpower, plough-teams, income and taxable capacity. The Book is a description of rights, charges, customs, duties and titles; however it records estates rather than settlements and does not always throw a lot of light onto the landscape.

The structure of the Domesday Book

The Domesday Book was organized by wapentakes in the West and North Ridings, and by hundreds in the East Riding. Wapentakes are mostly single units, the hundreds often had detached parts. *Ianulfestorpe* is linked with Dunnington, Grimston and *Scoreby* and all are found in the detached part of *Sneculfros* Hundred, which lay between the rivers Derwent and Ouse, but whose main part lies to the east of the Ouse.

In Domesday Book two carucates in *Ianulfestorpe* are said to be soke, or under the jurisdiction, of Clifton (Faull and Stinson 1986, fol 322c, 6), now in the north-western suburbs of York on the northern bank of the Ouse (Fig. 21). Although Clifton lay in the North Riding, it held a series of sokes as partial holdings in various East Riding townships between the Ouse and Derwent rivers: [Water] Fulford, Escrick, *Kettlethorp*, Langwith, Kelfield, Moreby and Deighton, *Ianulfestorpe* and Wheldrake (Faull and Stinson 1986, 6E1, 13E6, CE30). Their distribution (Fig. 21) shows that the townships are adjacent, with three having direct access to the rivers Ouse and Aire, and Wheldrake having access to the Derwent.

Clifton had a certain status in Anglo-Scandinavian Yorkshire, not evident from Domesday. Its importance as a major centre for collecting wool from some of Yorkshire's largest monastic houses is well documented (Kaner 1988). The setting of the soke group between the Ouse and Derwent rivers, with four having direct access to the waters, might suggest a water-borne mercantile role linked tenurially with the centre at Clifton (Fig. 21).

The land of *Ianulfestorpe* in the soke of Clifton was held by Halfden, pre-Conquest. He had a small dispersed estate

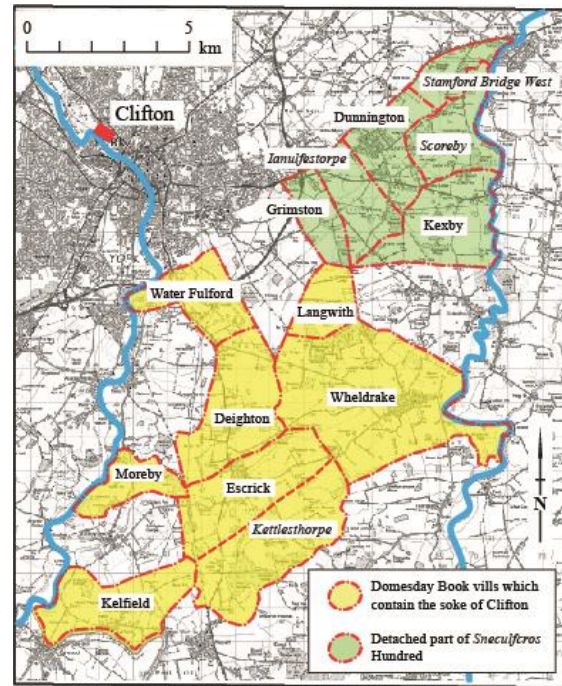


Fig. 21 Map based on modern 1inch OS, showing distribution of townships in Domesday Book which held parts of the soke of Clifton, and parts of Sneculfros Hundred between the rivers Ouse and Derwent

in and around York but, like many of the English landholders, Halfden lost his property before 1086.

Location of *Ianulfestorpe*

Sometimes when medieval townships disappeared, remnants of the earlier landscape survived within the adjoining townships into which the whole, or parts of it, were absorbed. However, *Ianulfestorpe* lay within a rich arable area, so little of the physical appearance of the former township can be found in the field patterns or names that survive on maps of Dunnington or Grimston. The fields of *Ianulfestorpe* were subsumed into the fields of Dunnington, after the abandonment of *Ianulfestorpe*, possibly in the post-Conquest period when the Minster acquired the full extent of the prebend manor in 1225.

The first clue to the location of the lost township survives in the northern

township boundary of Dunnington, separating it from the adjoining Murton and Holtby townships along the Roman road on the top of the moraine. The boundary changes from the north side of the road, west of Holtby Manor (Fig. 22) to the south side of the road, east of Holtby Manor. At this point a lane is shown on the 1st ed. 6inch OS map, known as Vengeance Lane, forming the township boundary between Murton and Holtby (Fig. 22).

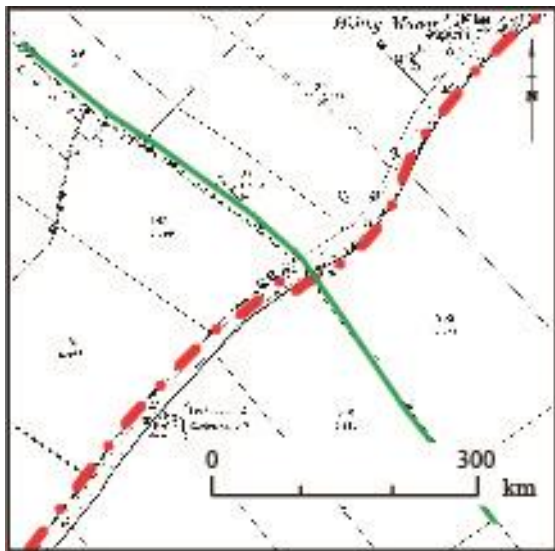


Fig. 22 Extract from 1st ed. 6inch OS map showing the northern boundary of the project area (in red), changing sides of the A166 and the boundary between medieval townships of Ianulfestorpe and Dunnington (in green), south of the A166. Located on Fig. 23

Within Dunnington township to the south, the line continues as a division of the field enclosure of 1709, a boundary which no longer survives. The line continues southwards across York Road, with slight deviation into Undergate Field and The Ings (Figs 22, 23), where it terminates on the southern boundary of the former meadows. This point is marked by the funnel entrance to the common, created by Hull Road dividing The Ings and the New Field, by Blue Hall. The slightly staggered form of this line could be explained by the hedges surviving on alternating sides of the lane, like the

boundary between Undergate Field and The Ings (Fig. 4), and the original line of Hagg Lane on the southern side of The Intakes (Fig. 5).

It is on the same alignment as the pre-medieval co-axial field system which forms the basis of the Dunnington field system. At least three parts of this line still formed footpaths in the 19th century.

This suggests that the route is of a very early date as a right of way, forming an access way within the original layout of the co-axial field system. A similar suggestion has been made for the principal route into and through Hagg Wood (Moorhouse 2007), which is on the same alignment and part of the same extended co-axial field system. If this suggestion is correct, as seems likely, then the line could have formed the medieval township boundary dividing *Ianulfestorpe* and Dunnington, laying on a north-south orientation on the southern slope of the York moraine.

If *Ianulfestorpe* was located between Grimston and Dunnington, as suggested, then the settlement lay roughly on the same contours as the villages of Grimston and Dunnington, along the important spring line. It would lie to the south of York Road, and may account for the non-parallel but bulging northern and southern boundaries of Undergate Field. Settlements are usually on a natural shallow plateau or slightly projecting area, as with the original core centres of Dunnington and Grimston. Contours suggest a shallow projecting area lay immediately south of Derwent Estate. A footpath now runs south from the estate very close to the suggested boundary between the townships of *Ianulfestorpe* and Dunnington (Figs 23, 24).

Having suggested the location of the Domesday township of *Ianulfestorpe*, we can now look to the meaning and

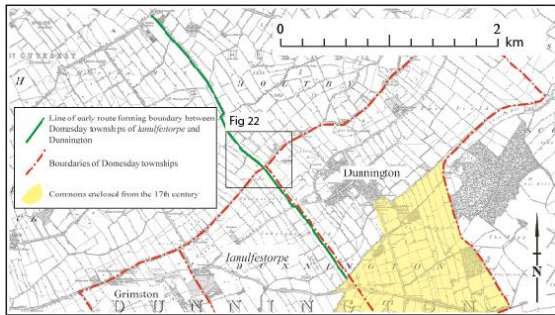


Fig. 23 Northern part of project area, showing line of early route forming boundary between Ianulfestorpe and Dunnington. To the north the boundary between Holtby and Murton (Vengeance Lane and Piker Thorne Lane), is on the same alignment as the co-axial field system. For details of inset see Fig. 22

significance of the name. Dr Gillian Fellows-Jensen has suggested that the first element is a Scandinavianised personal name **Jánulfr*. As this is not the same name as the person (Halfden) who held part of the former vill at Domesday, then the place-name was coined some time earlier.

It has recently been suggested that *thorpe* names with Old Norse qualifier personal names in ‘Danelaw’ England owe their origin to Norse-speaking immigrant communities that could have arrived in the later 9th and 10th centuries (Cullen, Jones and Parsons 2011). Unfortunately, *Ianulfestorpe* has been omitted from the recent distribution map of *thorpe* names in the vicinity of York (Cullen, Jones and Parsons 2011, p. 6 fig. 1.4). Territories with *thorpe* in their names were dependent on another vill. It is likely that the host vill/manor was Dunnington. The former vill was absorbed into Dunnington township when it lost its status and the physical evidence of its former landscape disappeared.

The suggested boundaries for *Ianulfestorpe* are shown on Figure 24, which also shows the boundaries of the surrounding Domesday vills on the moraine, with their enclosed fields before

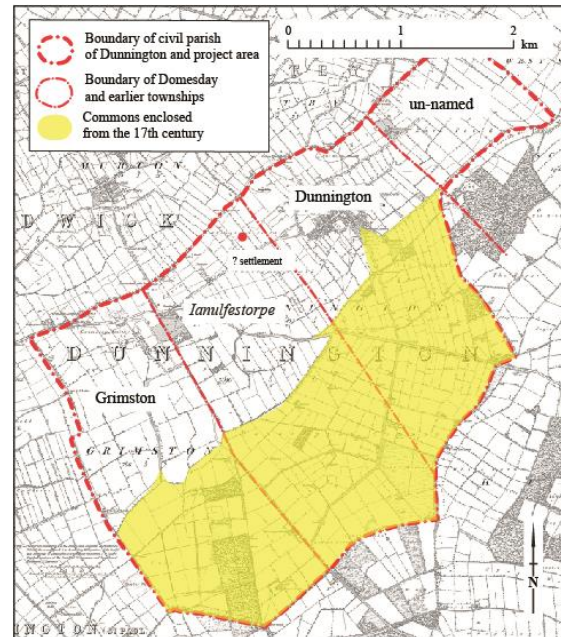


Fig. 24 1st ed. 6inch OS map with project area superimposed, showing medieval townships, their fields, funnels from Kexby Common to their settlements, and the northern part of Kexby Common. The site of the former settlement of Ianulfestorpe is suggested on the spring line on the moraine in line with the known settlements of Grimston and Dunnington on the same spring line

the commons were enclosed.

4. An un-named township

The eastern part of the medieval township of Dunnington appears to contain the remains of a township adjacent to *Stamford Bridge West*, which was probably abandoned by the 10th century (Fig. 24).

Despite the absence of conclusive proof there are compelling strands of evidence that suggest the presence of a former township. The combined width of the townships of Grimston and *Ianulfestorpe* on the fertile southern slope of the moraine are roughly equal to the remaining width of the Dunnington township (Fig. 1). It thus seemed likely that there may be a further un-named and undocumented township within this area. As Dunnington village survives in the western part, the

remaining area to the east is the un-named township.

A field boundary approximately halfway along the length of the field system of Dunnington runs through Mill Field and East Field, in line with the earlier co-axial system, from the western side of what is now Dunnington Hall, but was called East Field House in the 19th century. This alignment terminates on the southern side of East Field on Intake Lane. The line continues south-eastwards along the right-angled turn of Intake Lane. The straight line continues, and instead of turning east into Hagg Farm, carries on through a gate as a footpath to become the access into Hagg Wood. The path continues in a straight line into the wood itself and becomes the main artery through the wood (Fig. 24).

This path is on the same alignment as the earlier co-axial field system, whose line continues into the fields of *Scoreby* township, revealed by field survey and as crop and soil marks seen from the air (Moorhouse 2007). This straight line from the A166 road, running to the west of Dunnington Hall down to the path through Hagg Wood, and perhaps further south-east in the present fields of *Scoreby* township, is clearly shown on the modern 2½ inch OS map. If this line did mark the boundary of a former township (Figs 1, 24), it would create four townships of roughly equal width along the good soils of the moraine, within what is now the modern civil parish of Dunnington.

The creation of *Scoreby* township, probably in the 10th century, uses as its northern-western boundary the southern limit of the fields of the un-named township (Figs 1, 24). This line was probably defined by part of the extensive early route from York to Norton, opposite Malton, known as Intake Lane and Ox-Calder Way. This ran along the southern part of the York moraine, and defined the

good quality farming land to the north from the poorer quality grazing land to the south (Fig. 6). The extent of Hagg Wood in *Scoreby* was created after the formation of *Scoreby* township and originally covered the whole western half of the township (Moorhouse 2007). It was created over the poorer quality land, the common of the un-named township to the north.

The date when the un-named vill was abandoned can be suggested. The field system of the deserted medieval village of *Scoreby* was completely different from the earlier co-axial field system; the fields and landscape radiated out in a fan-like shape from the manor, centred on *Scoreby* Manor farm (Moorhouse 2007). This landscape overlies the shared common that the tenants of the un-named township would use.

The boundaries of all the townships within the project area, running down the southern slope of the moraine, were all parallel. It is likely that the eastern boundary of this un-named township was similarly aligned, in line with the eastern boundary of the East Field. It is thus probable that the eastern un-named and undocumented township is likely to have gone out of use before or when *Scoreby* township was created, probably in the 10th century.

The only section of the township to survive is the eastern part of the East Field of Dunnington. However, footpaths along early township boundaries are well known elsewhere, such as the one that survived on the now obsolete boundary between *Ianulfestorpe* and Dunnington. The footpath south of Intake Lane meanders slightly from the boundary line but where it enters Hagg Wood it continues through the wood precisely on line (Figs 1, 24).

Support for this early boundary comes from the botanical evidence. A series of

early indicator species were identified in appropriate places in surviving hedges. Although the boundary line through Mill Field and East Field did not survive as a physical barrier throughout the medieval period, it did survive as a division between plough strips, to be enclosed again in 1709. Indicator species from this early date survive where the boundary line crossed Eastfield Lane and the short stretch of Intake Lane where it turned southward though ninety degrees at its eastern end.

The combined evidence for this early township is speculative, but the circumstantial evidence is very convincing and deserves further work.

Regional themes

The township and the manor would have created many medieval and earlier landscape features which existed within the township, such as the siting and distribution of corn mills. Other features were created by wider influences and to understand the parts that survive, or can be recognised within the project area, they have to be seen in a regional setting.

Five are considered here: the underlying co-axial field system of probable prehistoric date, early intercommoning, pre-medieval and possibly pre-township route ways, the extensive wetland of Till Mire and the significance of Stamford Bridge. Their texts are summaries of larger more detailed discussions taken from the forthcoming book, where other topics, not considered here, will be found.

The co-axial field system

The work has shown that a co-axial field system underlies the historic landscape of an extensive area east of York, to the north and south of the moraine. Comparisons with other areas suggest that such systems are prehistoric in origin. The term 'co-axial' means literally long, narrow

parallel-sided fields which cover a large area (Fleming 1987). The system has formed the basis of much that has developed through to the medieval period and beyond, such as the creation of township boundary lines, the line of routeways, the siting of settlements and the continuity of township field systems.

The project has shown that the landscapes of Dunnington and Grimston were continuously occupied from the prehistoric period but with very different aspects. The planned three-row village of Grimston was inserted into the early alignment whereas the village core of Dunnington was laid out over the top of the earlier co-axial system.

The pre-Norman Conquest township boundary between Heslington/ Grimston/ *Ianulfestorpe*/Dunnington and the unnamed township all follow boundaries within this field system (Fig. 24). The publication of the recent archaeological work on the site of the University of York extension in Heslington (Roskams and Neal 2020), adjoining Grimston township, has shown that the Roman landscape is completely different, with no co-axial system. It therefore seems likely that the western boundary of the township of Grimston forms the western boundary of the co-axial system, and forms an important division between the co-axial system and the early landscape surrounding York.

Substantial parts of the co-axial field system and its subsequent alterations can be seen on the 1st ed. 6inch OS map (eg Fig. 24). Work is continuing to define its extent and development.

Early inter-common grazing

The sheet of Thomas Jeffreys' map of Yorkshire on which Dunnington and Grimston is found was surveyed in 1769. It is an important source of information regarding the use of farming landscapes through time. A number of large common grazing grounds are shown throughout the

county, shared by the tenants in a number of surrounding townships. One of these is described as *Kexby Common* (Figs 7, 25). About a third falls within the present project area and the work already carried out in *Scoreby* township. (Moorhouse 2007).

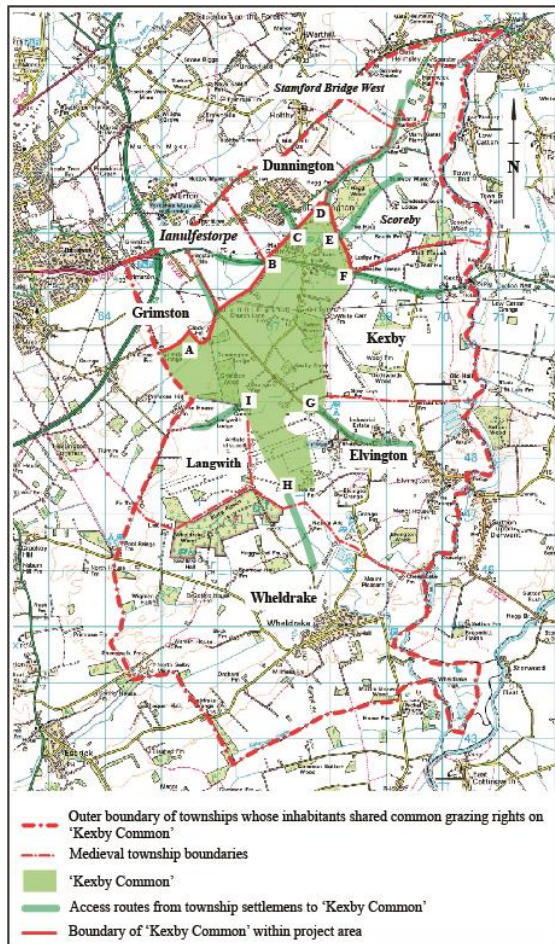


Fig. 25 Townships with grazing rights on Kexby Common and their funnels: Grimston (A), Ianulfestorpe (B), Dunnington (C), Stamford Bridge West (D), Scoreby (E), Kexby (F), Elvington (G), Wheldrake (H) and Langwith (I)

Documentary evidence shows that the creation of the such pastures pre-dates the Norman Conquest. The creation of the townships of Kexby and *Scoreby* in the 10th century over the abandoned and unnamed township show that *Kexby Common* was once larger on its eastern side. Whenever such extensive shared pastures were created, they suggest shared responsibility between those townships long before recorded history. The common

pasture would be defined by the field boundary hedges of the open fields of the townships adjacent to the common pasture. Substantial parts of the boundary for *Kexby Common*. within the project area, survive in the present landscape.

A feature of early communal grazing grounds was their funnels, wide tapering openings from the common, which gave access from the pasture to the settlement in the township. A number of these are clearly visible around '*Kexby Common*' on Jeffreys' map (Fig. 7, highlighted on Fig. 25). In a clockwise direction, these are Grimston (A), *Ianulfestorpe* (B), Dunnington (C), *Stamford Bridge West* (D), *Scoreby* (E), Kexby (F), Elvington (G), Wheldrake (H) and Langwith (I).

A small triangular funnel is formed where the track from the Hull road leads to the open common, between The Ings and New Field, lending weight to the suggestion that New Field was actually part of the pre-Conquest fields of *Ianulfestorpe*.

The funnel at Dunnington is not as clearly defined now, but it is significant that the 1st ed. 6inch OS map (Fig. 25, C) gives the name 'Common End' to the route which goes through the funnel, originally providing access from the village to the common on the south. The area of this funnel is shown on Jeffreys' map (Fig. 7). The southern boundary of Grimston township is the best-preserved boundary between township and common, where a substantial ditch still defines its line (Gypsy Corner).

It is possible that some early commons go back to the earliest stages of farming by man.

Early route-ways

The earliest recognisable parts of the surviving landscape are a series of early routeways which clearly pre-date the laying out of the township landscape. The Roman route on the moraine between

York and Stamford Bridge (A166) is well known and it is suggested that three further routes, Elvington Lane, the Hull road and a newly discovered route, have Roman origins (Fig. 3).

A route of regional importance of unknown date, but of probable prehistoric origin, follows the lower slopes of the moraine. Within the project area it starts on the northern boundary of *Scoreby* township. The name *Many Gates* Plantation survives north of Lime Field Farm. On the late 17th century *Scoreby* map (WYAS/L, LF/XXXI/1; small scale version in Maggs 2007) the name *Many Gates* is given to a large field north of Lime Field Farm and the *Stamford Bridge West* boundary (Fig. 26). The name comes from Old English *manig*, ‘many’, and Old Norse *gata*, ‘road’, with a combined meaning of a ‘meeting of many routes’. Such names across Yorkshire are usually medieval, and many are pre-Conquest in origin. It is shown on the late 17th century *Scoreby* map at the confluence of at least three important early routes (Figs 6, 26; see below). The distinctive place-name, *Many Gates*, is explained by the junction of these three early routes.

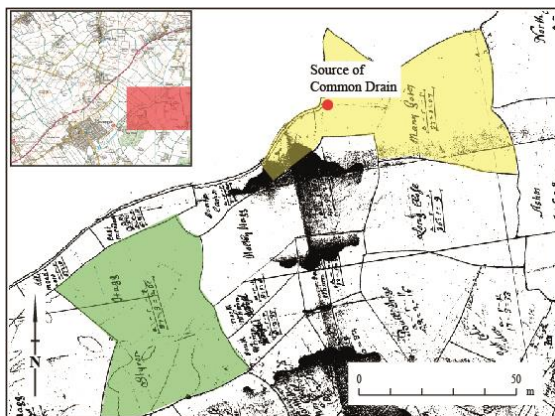


Fig. 26 Detail from late 17th century map of *Scoreby* township and manor showing *Many Gates* (yellow), *Styron Hagg* (red) and the source of the *Common Drain*

This route along the base of the moraine is probably preserved in the name ‘*Ox Calder Way*’, which is shown on the 1st ed. 6inch OS map. The name occurs on the

late 17th century *Scoreby* map (WYL72/XXXI1), where water levels are described in ‘the ditch’ (the *Common Drain*) and measurements given to prevent flooding. It is suggested that a bank should be raised between *ye ox calder* and ‘the ditch’. A sale map of 1914 (in private possession) records the route as *Ox Gang Way*. The middle element is from Old English *gang* or Old Norse *gangr*. In place-name terms it means ‘way, track’, but throughout Yorkshire it mostly refers to the route taken by animals to the common pasture. Here, at one time, oxen were the most frequent users. A similar route occurs on the map of *Grimston* of just before 1706-07, known by the much more common *Outgang* (Fig.13).

The fact that the southern boundary of *East Field* stops short of the *Common Drain* confirms that the route was in existence when the field was laid out, testifying to its antiquity. Westwards it crossed the *Hull road* and followed *Coneygarth Lane* and followed the same alignment across *Grimston* township to *Heslington* and into *York* (Fig. 6). This route traversed the *Dunnington* project area, it formed the division between the fields and common. While vestiges of the route can be seen on various maps, all traces of it have now disappeared. North-east of the project area the route crosses the *Derwent* at *Buttercrambe Bridge* on its way to *Norton*.

This route probably pre-dates the creation of the township structure. As it appears to follow the lower slopes of the firmer ground of the moraine, it was probably a track along the edge of the extensive area of wet ground to the south, known as *Till Mire* in the medieval period, and could therefore pre-date the Roman road (A166). This suggestion is strengthened by the route being the southern part of a much longer route heading north-eastwards almost in a straight line to *Norton*, on the eastern bank of the *Derwent* opposite *Malton*. An important Roman fort and

civilian settlement centre were based there, astride the river. The length between Buttercrambe and Norton is known as a Roman route (Ottaway 2003, p. 126 fig. 35), but it may have an even earlier origin (Fig. 6).

The second of these important early routes that passes through Many Gates appears to head to the deserted medieval village of *Scoreby* from the former open common (Figs 7, 9). The route survives as the older part of Hagg Lane, continuing through a former gap, now blocked with a hedge infill in the township boundary between Dunnington and *Scoreby*, and continuing along a field boundary as a footpath. After entering Hagg Wood it becomes one of the major routes in the woodland, defined by a deep ditch on the west side. This is replaced by shallow banks and external ditches on both sides of the broad green track, much wider than the present well-worn footpath. The path disappears on leaving the wood on the east, removed by modern ploughing, but clearly it headed for the deserted medieval village of *Scoreby*.

An early route along this line within Hagg Wood is suggested by the name *Styron Hagg* on the late 17th century *Scoreby* map (Fig. 26), given to one of the woodland enclosures. *Styron* contains Old English *stīg*, ‘path, narrow road’ and Old Norse *runnr*, ‘thicket’, a path through a thicket. This route was probably the drove road from the former village of *Scoreby* giving the tenants’ animals access to the extensive common pasture which Jeffreys’ described as *Kexby Common* (Fig. 7). Such a use probably explains the wide space between the banks and ditches defining the route as it passes through Hagg Wood.

The third route of great antiquity passing through Many Gates existed running north-south on the western bank of the River Derwent (Fig. 6) running from Sutton Bridge on the south, northwards to Buttercrambe Bridge. It connects the important river crossings at Sutton Bridge,

Kexby Bridge, Stamford Bridge and that at Buttercrambe, all of which are of great antiquity. The deserted medieval settlement of *Scoreby* was laid out on this route alongside the river.

The converging of three of these early routes to the north of the deserted medieval village of *Scoreby* explains the presence of the name Many Gates, and perhaps also the siting of the former village of *Scoreby*.

The identification of these early routeways emphasises the importance of understanding the origins of the modern landscape, rather than trying to interpret any feature in isolation. Their identification highlights the importance played by minor names and the importance of placing township features in their regional setting.

Till Mire

Till Mire is another example of the importance of seeing township landscape features as part of the region in which they lay. The name *Fylmire*, probably a mis-reading of the name *Tylmire*, is given to five fields covering the southern part of Grimston township on the map of just before 1706-07 (Fig. 14). The traditional meaning of the first element is as a personal name, but it probably comes from Old English *til*, ‘useful, good’, with the second element being Old English *mere* ‘pond, lake’. Here the name probably means ‘a multi-functional wetland’, as the documentation suggests.

The medieval name encompassed a large area to the south-east of York adjoining the southern part of the moraine. It is recorded in medieval documents from the twelfth century in the adjoining townships of Deighton, Dunnington, Fulford, Grimston and Heslington (Fig. 27).

The greater area of Till Mire supported a variety of uses, ranging from extractive processes to places of settlement. A

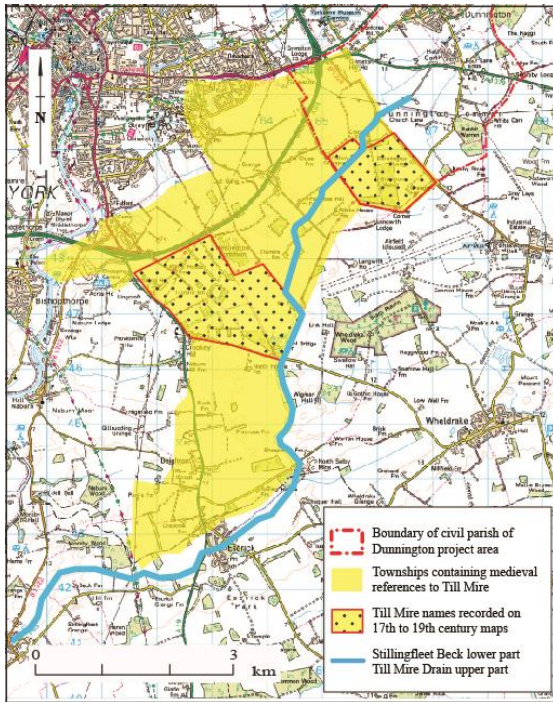


Fig. 27 Medieval and later references to Till Mire, showing its former extent

turbary, or turf cutting area, held by St Leonard's Hospital, York, is recorded in the marsh in the late twelfth century, while somewhere within the medieval extent of the wetland there was a medieval settlement by the mid-12th century. A length of Till Mire features as a boundary of the city of York, from the fourteenth century. The northern part of the marsh is also the source of the stream which ultimately becomes the Stillingfleet Beck, entering the River Ouse (a major transport route) at the village of that name (Fig. 27). The watercourse is frequently mentioned during the medieval period because it was often blocked.

The early-17th century Grimston memorandum book (WYL72LXXII49), records a number of details about Till Mire. An agreement is mentioned concerning the adjacent townships of Dunnington, Grimston and Heslington regarding which township should be responsible for scouring the upper reaches of the Stillingfleet Beck. Quantities of wood, its sources and costs are specified for repairing the sides of the beck and

providing bridges across its line. The reason given for this is that 'this would dry *Grimstone Tilmyer*' which would be to the advantage of the lord of Grimston. Willows are to be bought in York and set in the ground both at the 'Garth End in the *Byemore*' and in Till Mire (*Tilmier*). Interesting details of the planting of the willows are given: 'They are to be set deep with a spade as the spade is longer and they had to be high enough above the ground so that beasts cannot crop the bud on the top'. Willows are an important resource, favouring damp ground in marshes or on the banks of watercourses, where they form an important stabilizing function. Amongst many uses, their spindly branches were employed for the vast quantities and wide varieties of basketry containers in the medieval period.

Medieval marshes are usually thought to be barren areas of land, but medieval documentation shows that they contained a wide range of activities. Thus the southern parts of Grimston and Dunnington townships may contain evidence for a range of uses which ceased many centuries ago, but whose earthwork remains may still survive.

The importance of Stamford Bridge

Today Stamford Bridge is a quiet village on the River Derwent to the east of York that belies its long and important past. It lies on the Roman road from York to the East Coast (A166). A combination of recent archaeological and historical work has shown that it has a long and important history of regional significance, that explains why Dunnington was chosen as the base for one of York Minster's prebend manors (Fig. 28).

Roman settlement as ribbon development has been identified south of the village on a newly identified east-west Roman road that runs through the project area (partially shown in Fig. 3).

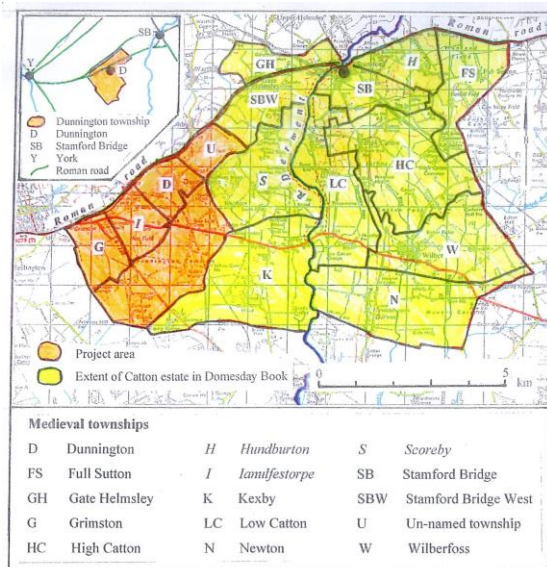


Fig. 28 Relationship of the project area (orange) to the extent of the estate granted to Wilfred in the 660s, and recorded in Domesday Book of 1086 (yellow)

Stamford Bridge formed an important part of the short-lived Kingdom of Deira in the 5th to 7th centuries, before being absorbed into the Kingdom of Northumbria. It formed part of the estate of *Aestanfordas* that was granted to St Wilfred by King Alhfrith of Northumbria in the 660s. This estate was attached to the church at Ripon. It was also the likely site of the estate of King Edwin of Northumbria, where in the early 620s Bede records an assassination attempt on his life. The complex had disappeared by 731, the year in which Bede was writing his *The Ecclesiastical History of the English People*, for he describes the event in the past tense. Following the defeat of the West Saxons and the killing of its king in 626 (the instigator of the attempted assassination on Edwin's life) the complex became the administrative centre for the whole of England south of the Tees between 626 and 631 (the date of Edwin's death). The estate, centred on Catton, survived to be recorded in Domesday Book of 1086 (Fig. 28).

Following the Norman Conquest Stamford Bridge retained its regional status. A market and fair existed from the

13th century, a number of monastic houses from across Yorkshire had property in the village and township, people from across the East Riding lived there and it was a meeting centre for transactions of people from throughout Yorkshire.

Stamford Bridge is the highest navigable part of the River Derwent. It was a likely port in the Roman and post-Roman periods and is a well-documented port in the medieval period. Dunnington lay mid-way between York and Stamford Bridge on an important east-west Roman road that has retained its importance through to today (Fig. 28, inset). It was probably this access to inland ports from York down the Ouse to the Humber and along the Derwent to its important ports along its route to Hull and beyond that attracted the canons' interest in Dunnington in the pre-Conquest period. Stamford Bridge has therefore been an important regional centre from at least the Roman period, and possibly before.

Conclusion

This project set out as a combined study of the landscape history and an investigation into the hedgerows of the civil parish of Dunnington. It soon became clear that the botanical evidence could not be interpreted without an understanding of the historical landscape and its development. However, in return, the botanical evidence has supported the documentary evidence and, at times, it has enhanced it.

English Elm has definitely proved to be a significant feature as it marked out medieval boundaries and also indicated an early network of Roman roads. The species is unusual in its abundance and it often dominates the hedgerow although it can also be found as a single plant at critical boundaries. Spindle, Purging Buckthorn, and Guelder Rose are also considered as historic 'marker species'.

These examples illustrate that botanical evidence has not only supported the historical framework but it has provided information that emphasises the conclusions.

Much further analytical work needs to be undertaken on the documentary evidence, for example on the Lane Fox archives, Kay Wheater's material and the Dean and Chapter material in the Minster Library.

The many hundreds of place-names need analysing, only some of which have been mentioned here and many of these do not survive. Those for Dunnington will only become known when the material in the Minster Library has been examined. Those for Grimston survive particularly in the 1606 survey, the early 17th century memorandum book and the many indentures. Detailed analysis of the various Grimston maps combined with the documents, may help locate lost names.

An understanding of the various disciplines used by the landscape historian is essential, and particularly how they are adapted for understanding historic landscapes, and how they work together. Appreciating the value of the documentary sources, and their weaknesses and strengths, is important. Above all it is important to understand the organisation of the township (or vill), the manor and the ecclesiastical parish, the differences between them and their impact on the historic landscape, and how to identify them on the ground. It is not possible to achieve the results of others without this background.

It is often thought that medieval documentation can only help understand the medieval landscape. It has many applications for understanding earlier landscapes, particularly those of the Roman period. Only a few are given here. The identification of small townships around Roman centres, military or particularly civilian, recorded on 1st ed. 6inch OS maps, show continuity from the

Roman period through the post-Roman period into the medieval period. Many have been identified across Yorkshire, local ones being Stamford Bridge and Malton. Potential villa estates have been suggested, as at Hovingham. A range of place-name elements are suggestive of Roman roads, as occurs within the project area. The implications of these and other applications are unique for interpreting the archaeological evidence. The implications of such work is endless and allows legitimate questions to be asked that could never come from archaeology. Sadly, over the past four decades, archaeologists have dismissed, some vociferously, all of these unique approaches.

Despite much of the project area being ploughed, there is much scope for further fieldwork and survey. Fieldwork over the suggested settlement site of *Ianulfestorpe* and trying to locate the settlement of the un-named township along the spring line that the other settlements of Grimston, *Ianulfestorpe*, and Dunnington lie, would prove rewarding. There is much potential for survey work, but it must only be carried out with the practised and experienced eye. The most important piece of landscape is the former village site at Grimston. Further work is also needed on a multi-disciplinary approach of documents, field names and field work to identify many features that were known to have existed, but whose location is uncertain or unknown, such as the manorial corn mill.

It must be remembered that much of the land within the project area is private: permission must be obtained from the farmer and/or land owner.

The results of the work of the landscape historian as outlined in this booklet are very rarely found in Historic Environment Records (HERs), yet HERs are specifically designed as the source of knowledge for those seeking such information regarding the historic landscape. They are designed by archaeologists, for archaeologists and

contain mainly archaeological material. The work at Dunnington and other similar projects, has shown that understanding historic landscapes cannot and should not be based on archaeological finds alone.

It is recommended that this booklet is read in conjunction with Barry Wright's work *Historic Hedgerow Heritage of Dunnington*, which points out many botanical features which help to understand the landscape.

The author is in the process of editing a substantial and comprehensive volume on the results of the project. The present booklet briefly summarizes some of these results. The volume will be much more complete on the results and will include the often substantial evidence for many of the comments summarized above, such as the complex arguments and wide-ranging evidence for the importance of Stamford Bridge for understanding the importance of why York Minster established an important prebendary manor in Dunnington. It will include 95,000 words and over 80 illustrations, including drawings, photos and tables. The volume will include transcripts of the lengthy and detailed 1606 survey and the early 17th century memorandum book. It will conclude with recommendations for future work that could be carried out by community groups, a glossary and an extensive bibliography.

Bibliography

Arngart, O., 1972. 'On the *-ingtūn* type of English place-name', *Studia Neophilologica*, 44, pp. 263-273.

Beresford, M.W., 1979. 'The decree rolls of Chancery as a source of economic history, 1547-c.1700', *Economic History Review*, 2nd ser. 32, pp. 1-10.

Blair, J., Rippon, S. and Smart, C., 2020. *Planning in the Early Medieval Landscape*,

Exeter Studies in Medieval Europe: History, Society and the Arts, Exeter.

Clark, M.C., 1935. *A Gazetteer of Roman Remains in East Yorkshire*, Roman Malton and District Report No. 5, Roman Antiquities Committee of the Yorkshire Archaeological Society, Leeds.

Cole, A., 1993. 'Distribution and use of *mere* as a generic in place-names', *Journal of the English Place-Name Society*, 25, pp. 38-50.

Cullen, P., Jones, R., and Parsons, D.N., 2011. *Thorps in a Changing Landscape*, Explorations in Local and Regional History, 4. University of Hertfordshire Press.

Faull, M.L., 1978-79. 'Place-names and past landscapes', *Journal of the English Place-Name Society*, 11, pp. 24-46.

Faull, M.L., and Stinson, M. (eds), 1986. *Domesday Book 30: Yorkshire*, 2 volumes. Phillimore, Chichester.

Fellows-Jensen, G., 1972. *Scandinavian Settlement Names in Yorkshire*, Akademisk

Fellows-Jensen, G., 1974. 'English place-names such as Doddington and Donnington', *Sydsvenska Ortnamnssällskapets Årsskrift*, pp. 26-65.

Fleming, A., 1987. 'Coaxial field systems: some questions of time and space', *Antiquity*, 61, part 232, pp. 188-203.

Gelling, M., 1978. *Signposts to the Past: Place-names and the History of England*, Dent. London.

Gelling, M., and Cole, A., 2000. *The Landscape of Place-Names*, Shaun Tyas, Stamford.

Hollowell, S., 2000. *Enclosure Records for Historians*, Phillimore, Chichester.

Kaner, J., 1998. 'Clifton and medieval woolhouses', *York Historian*, 8, pp. 2-10.

Maggs, R.A., (ed.), 2007. *Hagg Wood: Past, Present and Future*, Friends of Hagg Wood, Dunnington.

Moorhouse, S., 2007. 'The medieval landscape of *Scoreby* township', in Maggs 2007, pp. 17-25.

Moorhouse, S., 2011. 'Medieval manorial complexes in Yorkshire: a multi-disciplinary approach', in M. Aires and P.S. Barnwell (ed), *The Medieval Great House*, Shaun Tyas, Donnington, pp. 214-242.

Ottaway, P., 2003. 'Roman Yorkshire: a rapid resource assessment', in T.G. Manby, S. Moorhouse and P. Ottaway (eds), *The Archaeology of Yorkshire: an appreciation at the beginning of the 21st century*, Yorkshire Archaeological Society Occasional Paper No. 3, pp. 225-250.

Proctor, W., 1855. 'Roman altar, found at Dunnington, near York', in W. Bowman (ed.), *Reliquie Antiquae Eboracenses, or Remains of Antiquity, Relating to the County of York*, Leeds, pp. 86-7.

Roskams, S. and Neal, C., 2020. *Landscape and settlement in the Vale of York: archaeological investigations at Heslington East, York, 2003-13*, Society of Antiquities of London.

Wright, B., 2007. '*Scoreby*'s hedgerows', in Maggs 2007, pp. 26-30.



Aerial photograph of Dunnington